

#050022635

SUBDIVISION PLAT OF THE RETREAT PHASE TWO STONEHOUSE DISTRICT, JAMES CITY COUNTY, VIRGINIA SCALE = 1"=100' AUGUST 1, 2005

CURVE DATA

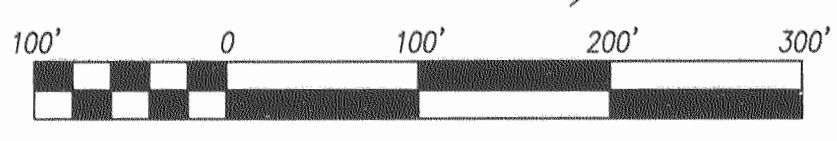
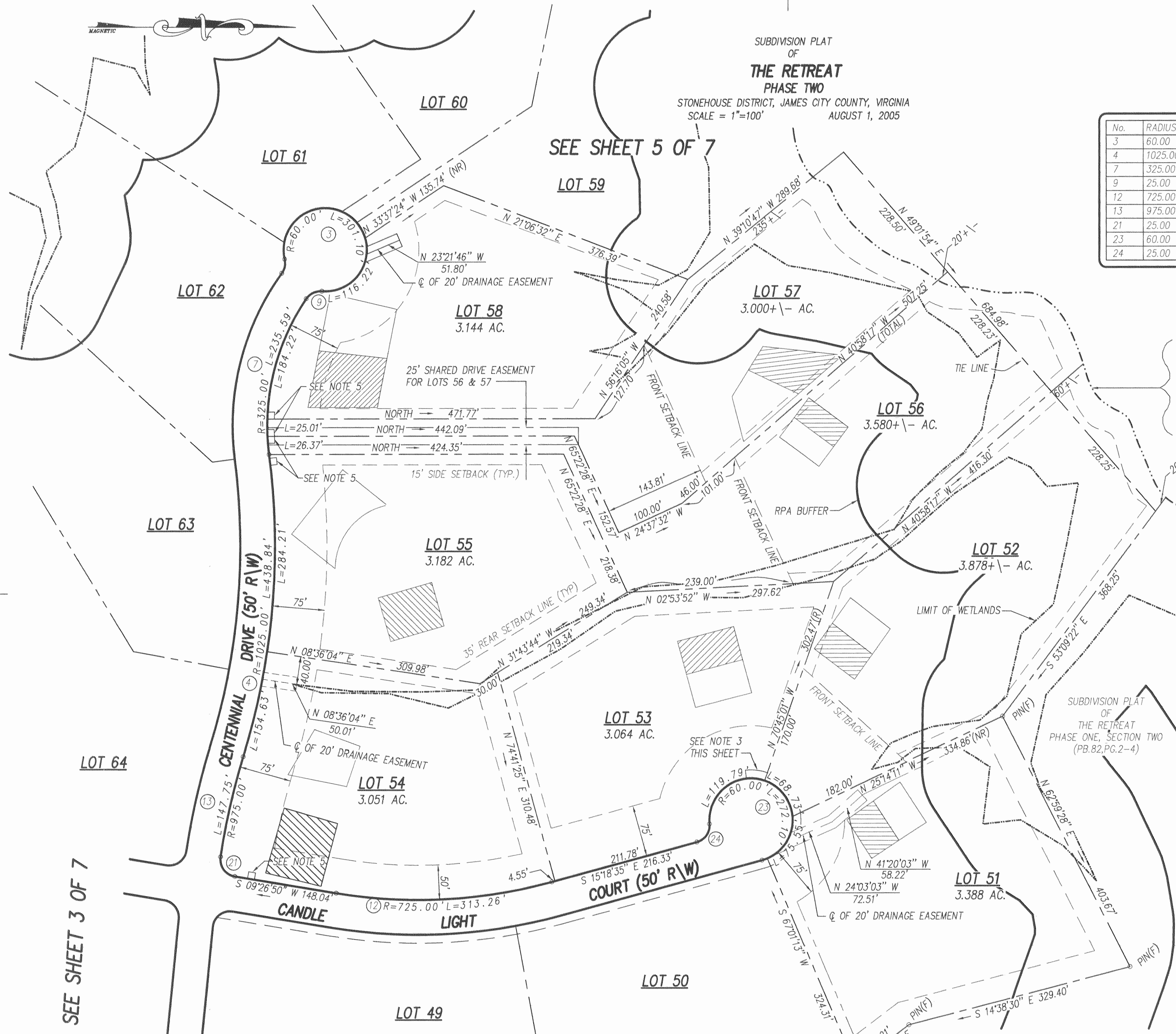
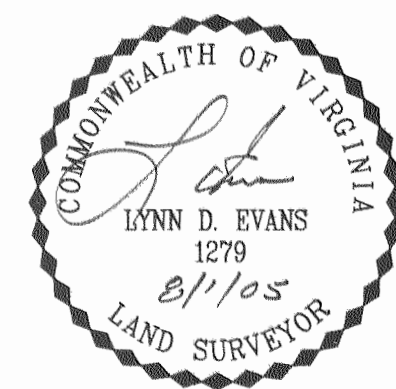
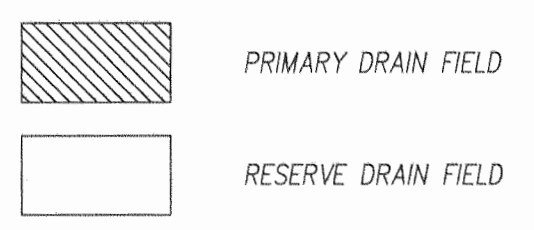
Table with 7 columns: No., RADIUS, LENGTH, DELTA, TANGENT, CHORD BEARING, CHORD. Contains 12 rows of curve data.

N/F B.S. BOWMER, JR. ARLINE H. BOWMER (DB.95,PG.184)

PROPERTY LINE IS THE CENTER LINE OF THE STREAM AS SHOWN ON "BOUNDARY SURVEY OF LAND TO BE ACQUIRED BY LHIW, LAND INVESTORS, INC." DATED 1/27/97 PREPARED BY SUTTON & JAMES P.C.

- NOTE: 1. UNLESS OTHERWISE NOTED ALL DRAINAGE EASEMENTS ARE TO BE PRIVATELY MAINTAINED. 2. ALL STREETS ARE DEDICATED FOR PUBLIC USE. 3. 12' J.C.S.A. UTILITY EASEMENT 4. RPA BUFFER APPROVED BY JAMES CITY COUNTY 3/28/05. 5. 10'x10' J.C.S.A. UTILITY EASEMENT 6. THE WATER SERVICE LINE AND WATER METER FOR LOT 54 SHALL MAINTAIN A 10 FEET HORIZONTAL SEPARATION FROM THE SEWERAGE DRAINFIELD(S).

LEGEND



SCALE 1"=100'

SEE SHEET 1 OF 7 FOR NOTES AND CERTIFICATIONS

City of Williamsburg & County of James City Circuit Court: This PLAT was recorded on 22 September 2005 at 11:13 AM P.M. PG. DOCUMENT # 050022635 BETSY B. WOOLRIDGE, CLERK

Large/Small Plat(s) Recorded herewith as # 050022635

Rickmond Engineering, Inc. ENGINEERING SURVEYING LAND PLANNING 1643 MERRIMAC TRAIL WILLIAMSBURG, VA. VOICE: (757) 229-1776 FAX: (757) 229-4683 Vint Hill • P.O. Box 861647 WARRENTON, VA. VOICE: (540) 349-7730 FAX: (540) 349-7731 www.rickmond.com

Table with 5 columns: CHECKED BY: LDE, DRAWN BY: DWD, SCALE: 1"=100', DATE: 08/01/05, JOB NO. 04153