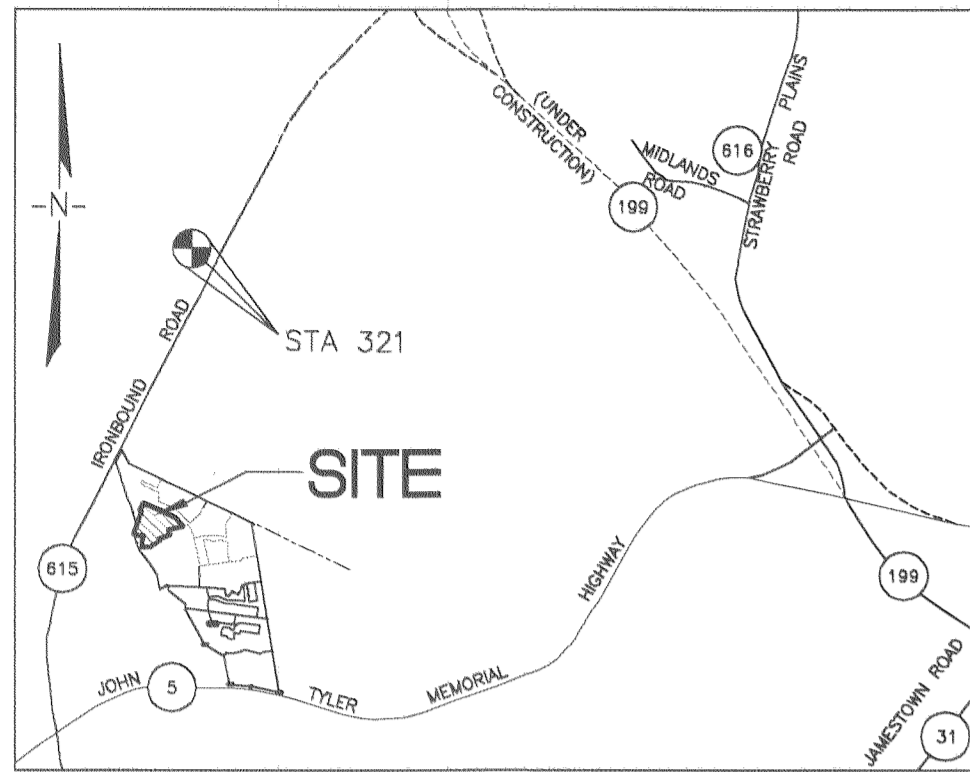
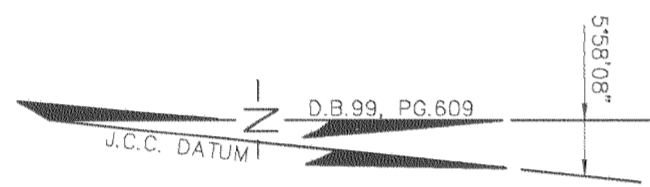


#050022442



VICINITY MAP 1"=2000'



N=3620552.69
E=11989444.45
(SEE NOTE #5)

JOHN TYLER HIGHWAY
STATE ROUTE 5
VARIABLE WIDTH R/W

N=3620489.60
E=11989961.80
(SEE NOTE #5)

GRAYLIN WOODS
SECTION 1-A
P.B. 41 PG. 76

47-1-5
GRAYLIN WOODS
SECTION 2
P.B. 44 PG. 87

GRAYLIN WOODS
SECTION 3
P.B. 44 PG. 88

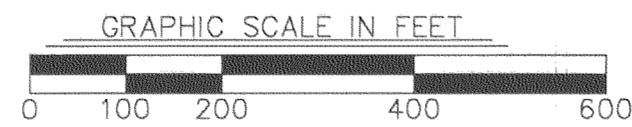
47-1-3
THE FOXES
LOT 11 E
P.B. 36 PG. 75

THE FOXES
LOT 11 D
P.B. 36 PG. 75

STATE OF VIRGINIA, COUNTY OF JAMES CITY

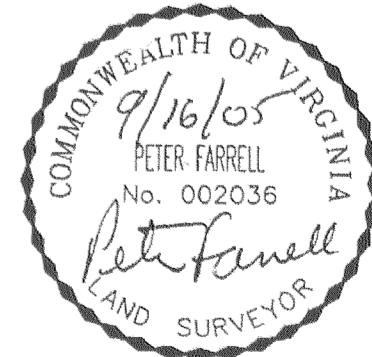
IN THE CLERK'S OFFICE OF THE CIRCUIT COURT THE PLAT SHOWN HEREON WAS PRESENTED AND ADMITTED TO RECORD 21 September 2005 AS THE LAW DIRECTS.

TESTEE: BETSY B. WOOLRIDGE, CLERK
Betsy Woolridge Clerk
DOCUMENT NO. 050122442



City of Williamsburg & County of James City
Circuit Court: This PLAT was recorded on 21 September 2005
at 11:13 AM/PM-PB — PG —
DOCUMENT # 050122442
BETSY B. WOOLRIDGE, CLERK
Betsy Woolridge Clerk

4 Large/Small Plat(s) Recorded
herewith as # 050122442



CONDOMINIUM PLAT
OF
SECTION 6F
(A PORTION OF PHASE II)
BRANDON WOODS
JAMES CITY COUNTY, VIRGINIA
SCALE: 1"=200' DATE: 9/16/05

SHEET 1 OF 4

**LANDMARK
DESIGN GROUP**
Engineers • Planners • Surveyors
Landscape Architects • Environmental Consultants

4029 IRONBOUND ROAD SUITE 100
WILLIAMSBURG, VA 23188
TEL (757) 253-2975 FAX(757) 229-0049

DRAWN BY: PF
CHKD BY: AST

PROJ. NO.: 1980074-000.62
DWG. NO.: 16477W