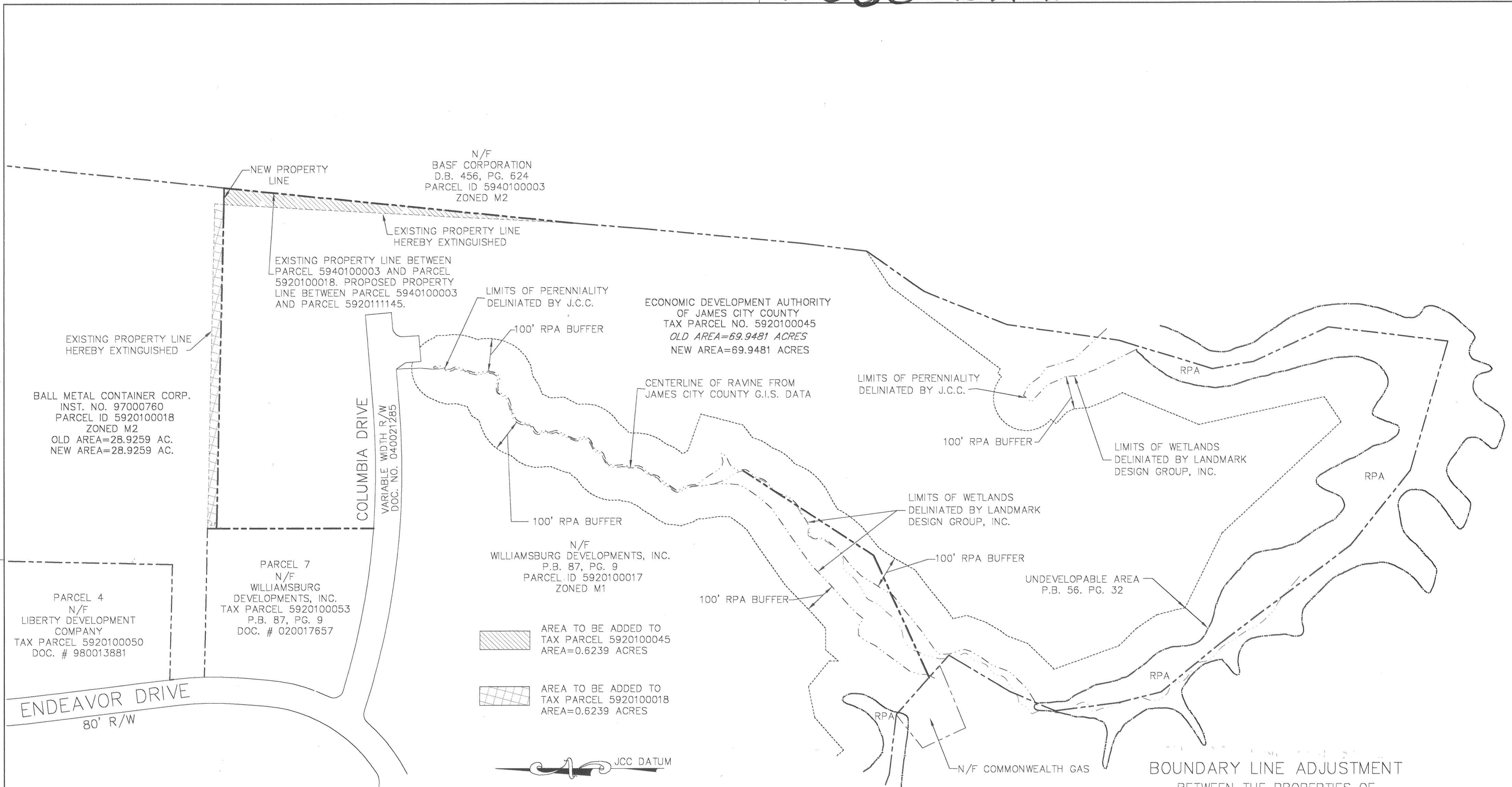


#050021172



AREA TO BE ADDED TO TAX PARCEL 5920100045  
AREA=0.6239 ACRES

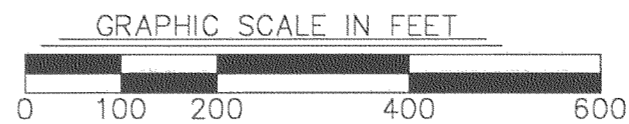
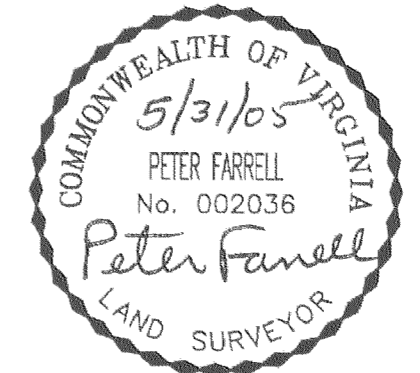
AREA TO BE ADDED TO TAX PARCEL 5920100018  
AREA=0.6239 ACRES

BOUNDARY LINE ADJUSTMENT  
BETWEEN THE PROPERTIES OF  
ECONOMIC DEVELOPMENT AUTHORITY  
OF JAMES CITY COUNTY, VIRGINIA  
AND BALL METAL BEVERAGE  
CONTAINER CORPORATION  
AT THE  
JAMES RIVER COMMERCE CENTER  
ROBERTS DISTRICT, JAMES CITY COUNTY, VIRGINIA

DATE: 02/08/05 SCALE: 1"=200'  
REVISED: 5/31/05  
SHEET 3 OF 3

City of Williamsburg & County of James City  
Circuit Court: This PLAT was recorded on  
at 9:30 AM/P.M. PB 7 PG September 2005  
DOCUMENT # 050021172  
BETSY B. WOOLRIDGE, CLERK  
Betsy B. Woolridge Clerk

3 Large/Small Plat(s) Recorded  
herewith as # 050021172



**LANDMARK**  
DESIGN GROUP  
Engineers • Planners • Surveyors  
Landscape Architects • Environmental Consultants

4029 Ironbound Road  
Suite 100  
Williamsburg, VA 23188  
Tel. (757) 253-2975  
Fax (757) 229-0049  
Email: lmdg@landmarkdg.com

5544 Greenwich Road  
Suite 200  
Virginia Beach, VA 23462  
Tel. (757) 473-2000  
Fax (757) 497-7933  
Email: lmdg@landmarkdg.com