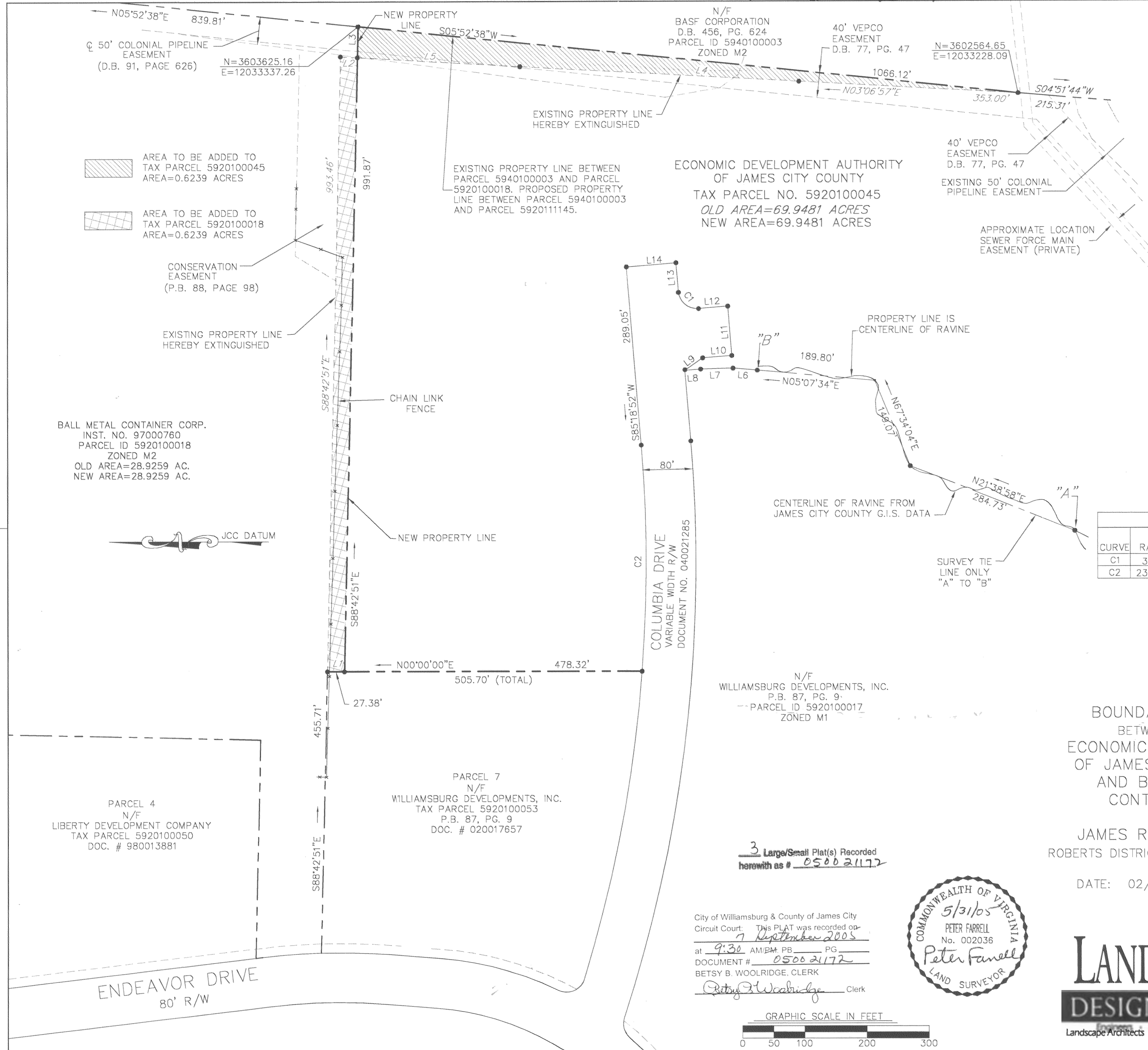


#050021172



LINE TABLE		
LINE	LENGTH	BEARING
L3	50.42'	S88°42'51"E
L6	39.06'	N04°51'14"E
L7	52.04'	N01°41'47"W
L8	25.47'	N04°27'10"W
L9	34.73'	S34°57'03"E
L10	47.00'	S04°41'08"E
L11	80.00'	N85°18'52"E
L12	47.00'	N04°41'08"W
L13	47.00'	N85°18'52"E
L14	80.00'	N04°41'08"W

LINE TABLE PROPERTY LINES TO BE EXTINGUISHED		
LINE	LENGTH	BEARING
L1	27.39'	N00°00'00"E
L2	27.40'	S03°19'41"W
L4	449.02'	N03°06'57"E
L5	261.25'	N03°19'41"E

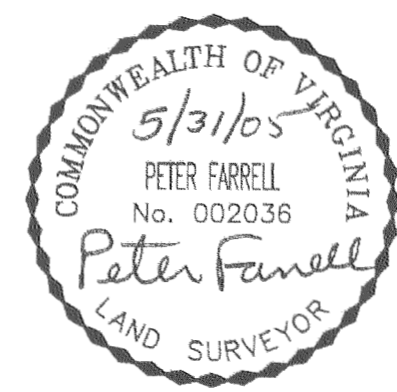
CURVE TABLE						
CURVE	RADIUS	LENGTH	TANGENT	CHORD	CHORD BEARING	DELTA
C1	30.00'	47.12'	30.00'	42.43'	N40°18'52"E	90°00'00"
C2	2320.00'	364.72'	182.74'	364.34'	S89°49'05"W	9°00'26"

ECONOMIC DEVELOPMENT AUTHORITY
OF JAMES CITY COUNTY
TAX PARCEL NO. 5920100045
OLD AREA=69.9481 ACRES
NEW AREA=69.9481 ACRES

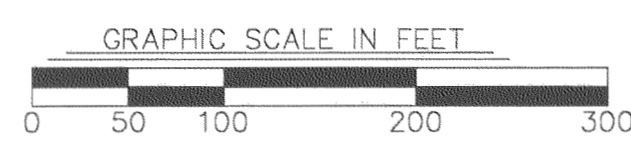
N/F
WILLIAMSBURG DEVELOPMENTS, INC.
P.B. 87, PG. 9
PARCEL ID 5920100017
ZONED M1

BOUNDARY LINE ADJUSTMENT
BETWEEN THE PROPERTIES OF
ECONOMIC DEVELOPMENT AUTHORITY
OF JAMES CITY COUNTY, VIRGINIA
AND BALL METAL BEVERAGE
CONTAINER CORPORATION
AT THE
JAMES RIVER COMMERCE CENTER
ROBERTS DISTRICT, JAMES CITY COUNTY, VIRGINIA

DATE: 02/08/05 SCALE: 1"=100'
REVISED: 5/31/05
SHEET 2 OF 3



City of Williamsburg & County of James City
Circuit Court: This PLAT was recorded on
7 September 2005
at 9:30 AM/P.M. PG. _____
DOCUMENT # 050021172
BETSY B. WOOLRIDGE, CLERK
Betsy B. Woolridge Clerk



LANDMARK
DESIGN GROUP
Landscape Architects • Environmental Consultants

4029 Ironbound Road
Suite 100
Williamsburg, VA 23188
Tel. (757) 253-2975
Fax (757) 229-0049
Email: lmdg@landmarkdg.com

5544 Greenwich Road
Suite 200
Virginia Beach, VA 23462
Tel. (757) 473-2000
Fax (757) 497-7933
Email: lmdg@landmarkdg.com

1950094-000.19 bdrf line esj plot Ball Metal & IDA- (EUA)-PLAT.dwg