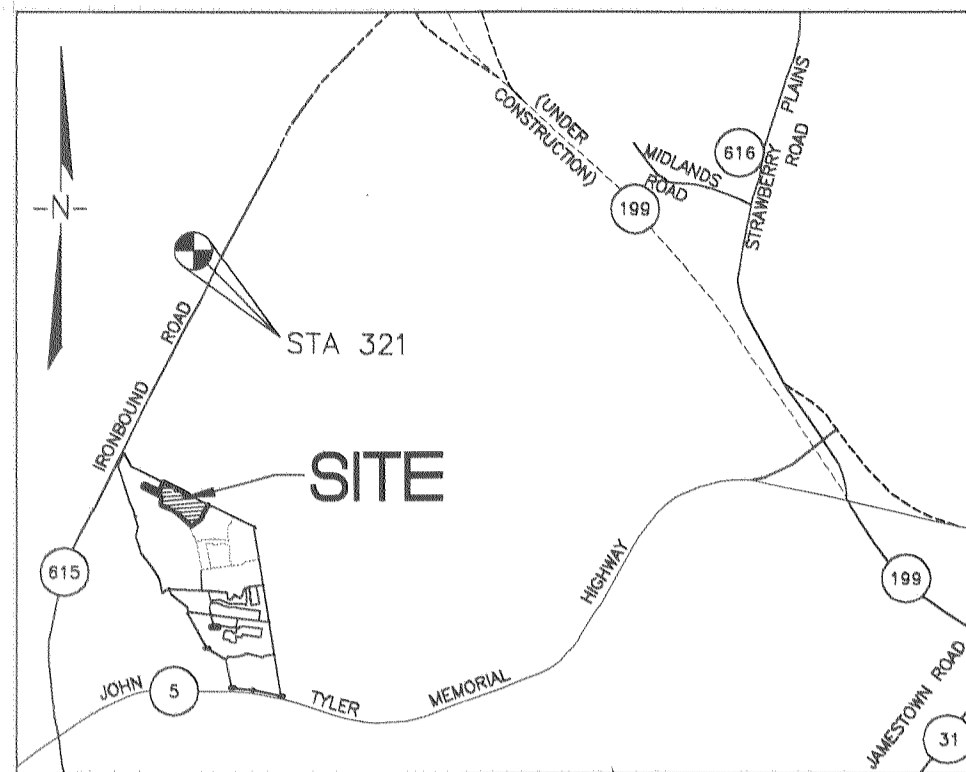
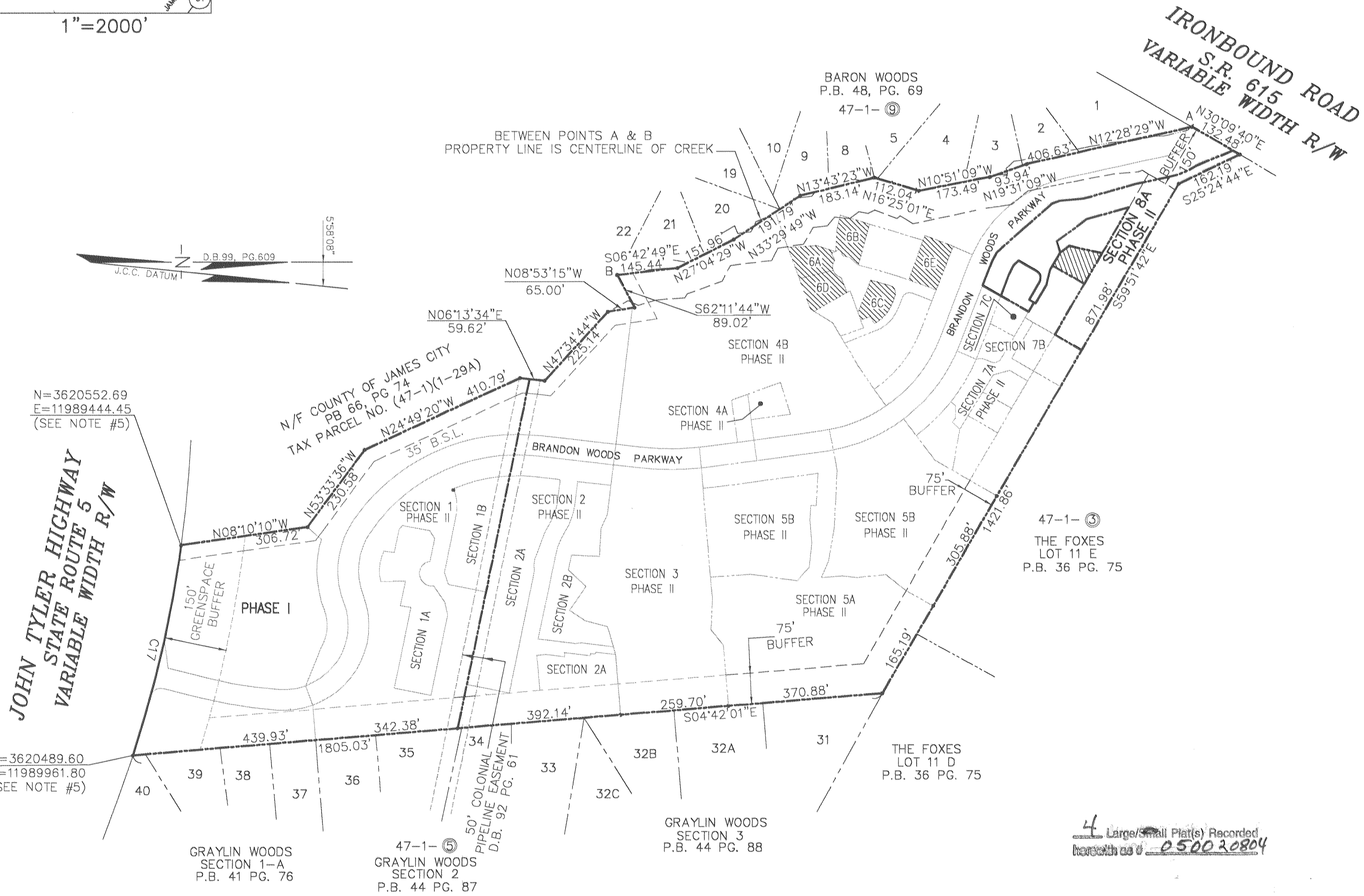


#050020804



VICINITY MAP 1"=2000'



JOHN TYLER HIGHWAY  
STATE ROUTE 5  
VARIABLE WIDTH R/W

N=3620552.69  
E=11989444.45  
(SEE NOTE #5)

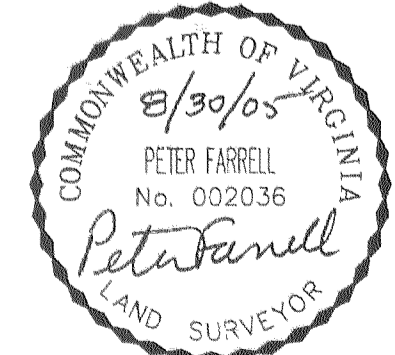
N=3620489.60  
E=11989961.80  
(SEE NOTE #5)

CONDOMINIUM PLAT  
OF  
SECTION 8A  
(A PORTION OF PHASE II)  
BRANDON WOODS  
JAMES CITY COUNTY, VIRGINIA  
SCALE: 1"=200' DATE: 8/30/05  
SHEET 1 OF 4

STATE OF VIRGINIA, COUNTY OF JAMES CITY  
IN THE CLERK'S OFFICE OF THE CIRCUIT COURT THE PLAT SHOWN HEREON WAS PRESENTED AND ADMITTED TO RECORD  
1 September 2005 AS THE LAW DIRECTS.  
TESTEE: Betsy B. Woolridge CLERK  
DOCUMENT NO. 050020804



City of Williamsburg & County of James City  
Circuit Court: This PLAT was recorded on  
1 September 2005  
at 3:28 AM/PM, PG.       
DOCUMENT # 050020804  
BETSY B. WOOLRIDGE, CLERK  
Betsy B. Woolridge Clerk



**LANDMARK DESIGN GROUP**  
Engineers • Planners • Surveyors  
Landscape Architects • Environmental Consultants  
4029 IRONBOUND ROAD SUITE 100  
WILLIAMSBURG, VA 23188  
TEL (757) 253-2975 FAX(757) 229-0049