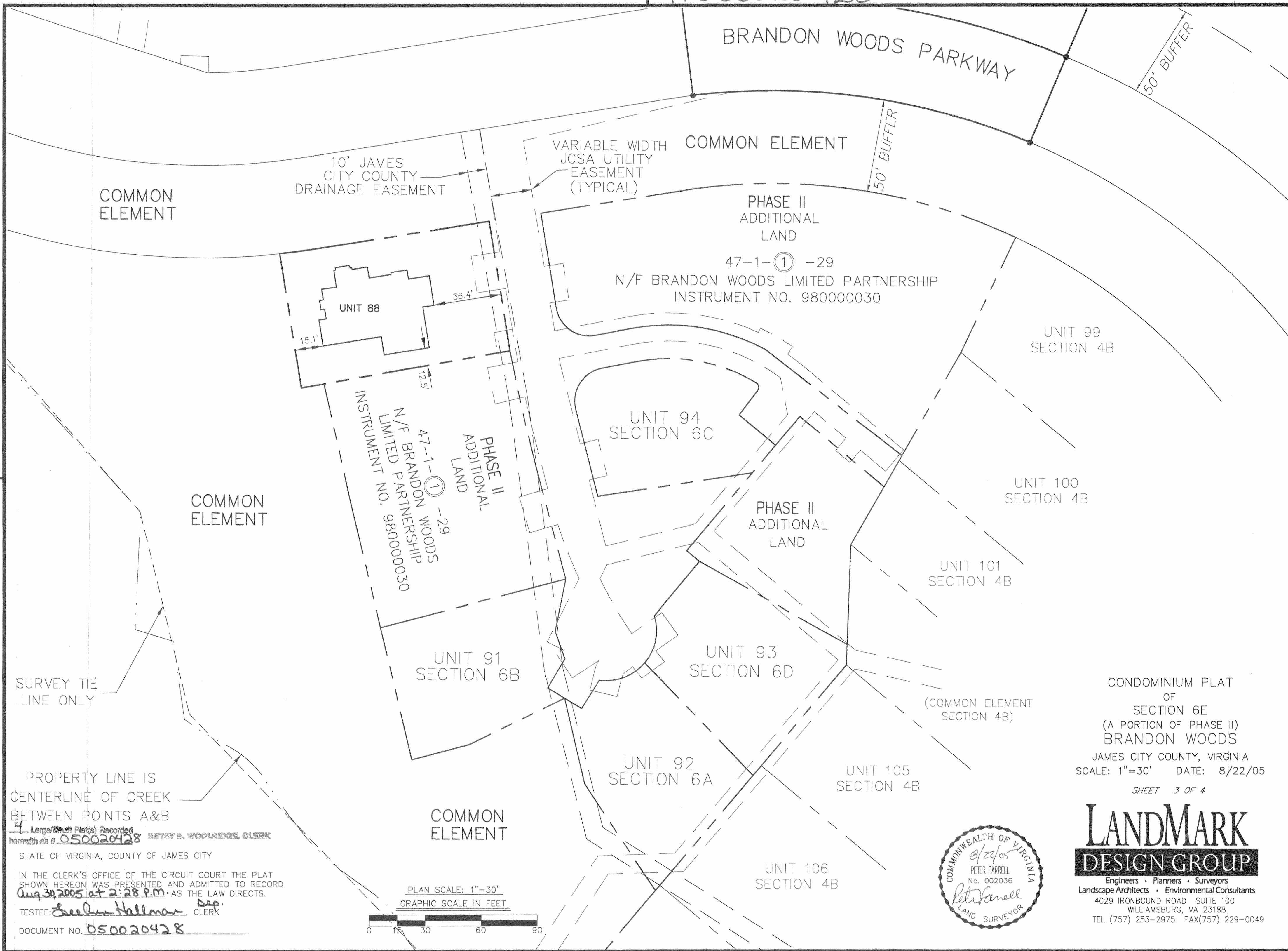


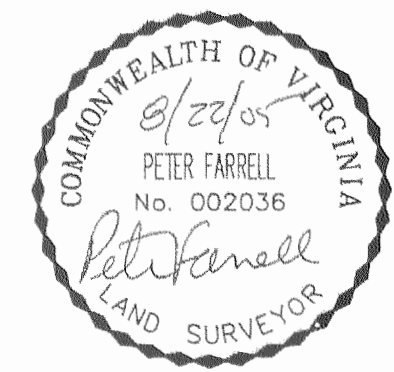
1#050020428



CONDOMINIUM PLAT
OF
SECTION 6E
(A PORTION OF PHASE II)
BRANDON WOODS
JAMES CITY COUNTY, VIRGINIA
SCALE: 1"=30' DATE: 8/22/05
SHEET 3 OF 4

**LANDMARK
DESIGN GROUP**

Engineers • Planners • Surveyors
Landscape Architects • Environmental Consultants
4029 IRONBOUND ROAD SUITE 100
WILLIAMSBURG, VA 23188
TEL (757) 253-2975 FAX(757) 229-0049



SURVEY TIE
LINE ONLY

PROPERTY LINE IS
CENTERLINE OF CREEK
BETWEEN POINTS A&B

4 Large/Small Plats Recorded
herewith as # 050020428 Betsy B. Woolridge, Clerk

STATE OF VIRGINIA, COUNTY OF JAMES CITY
IN THE CLERK'S OFFICE OF THE CIRCUIT COURT THE PLAT
SHOWN HEREON WAS PRESENTED AND ADMITTED TO RECORD
Aug. 30, 2005 at 2:28 P.M. AS THE LAW DIRECTS.

TESTEE: *See in Hallman* Dep. Clerk
DOCUMENT NO. 050020428

