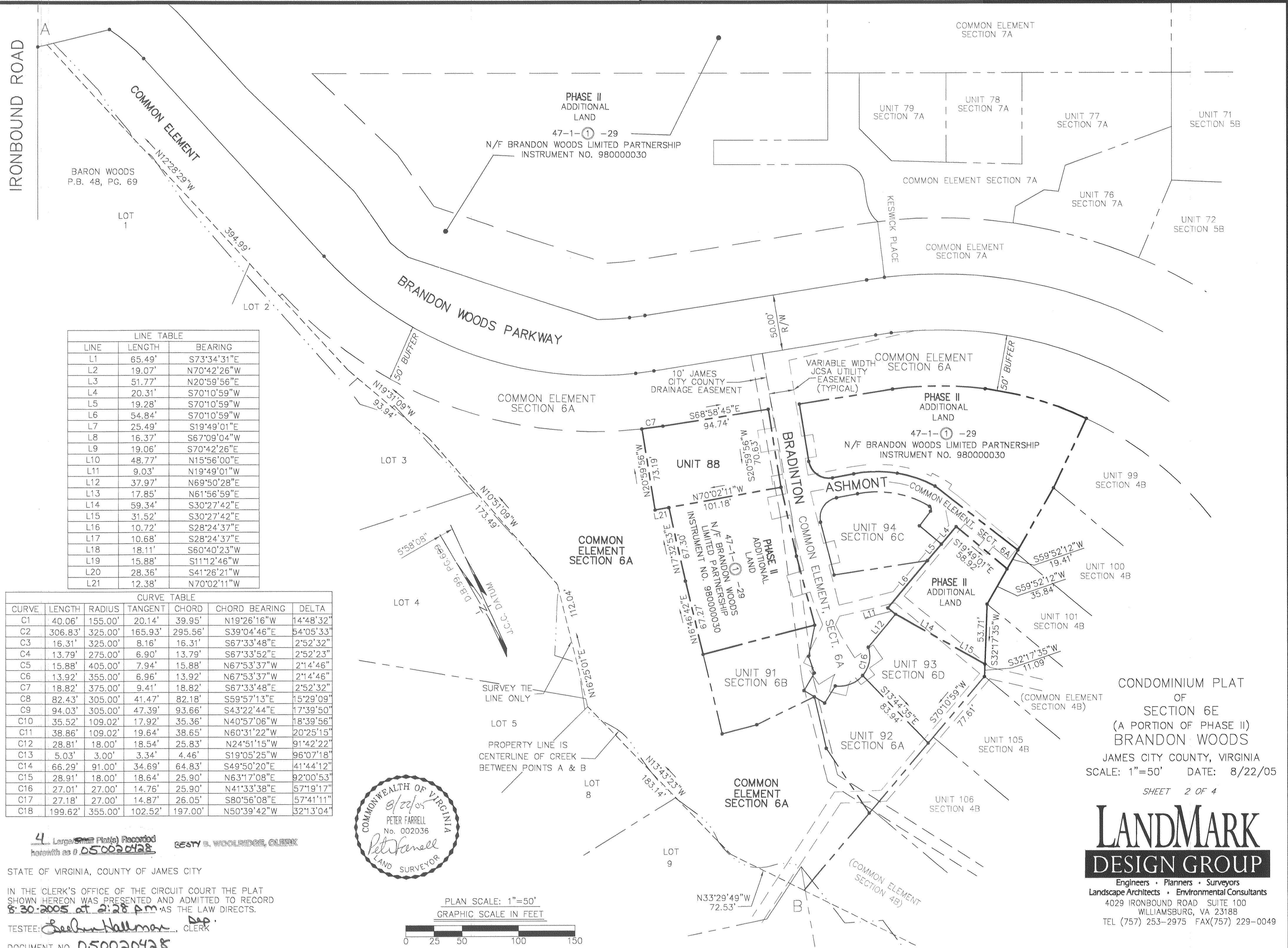


# 050020428



LINE TABLE

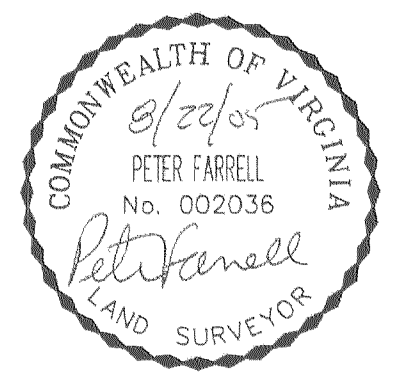
LINE	LENGTH	BEARING
L1	65.49'	S73°34'31"E
L2	19.07'	N70°42'26"W
L3	51.77'	N20°59'56"E
L4	20.31'	S70°10'59"W
L5	19.28'	S70°10'59"W
L6	54.84'	S70°10'59"W
L7	25.49'	S19°49'01"E
L8	16.37'	S67°09'04"W
L9	19.06'	S70°42'26"E
L10	48.77'	N15°56'00"E
L11	9.03'	N19°49'01"W
L12	37.97'	N69°50'28"E
L13	17.85'	N61°56'59"E
L14	59.34'	S30°27'42"E
L15	31.52'	S30°27'42"E
L16	10.72'	S28°24'37"E
L17	10.68'	S28°24'37"E
L18	18.11'	S60°40'23"W
L19	15.88'	S11°12'46"W
L20	28.36'	S41°26'21"W
L21	12.38'	N70°02'11"W

CURVE TABLE

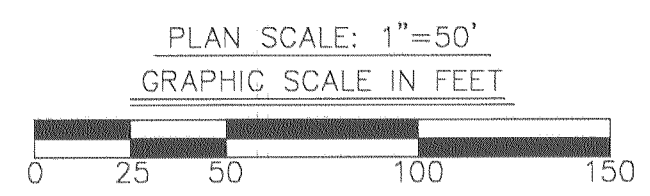
CURVE	LENGTH	RADIUS	TANGENT	CHORD	CHORD BEARING	DELTA
C1	40.06'	155.00'	20.14'	39.95'	N19°26'16"W	14°48'32"
C2	306.83'	325.00'	165.93'	295.56'	S39°04'46"E	54°05'33"
C3	16.31'	325.00'	8.16'	16.31'	S67°33'48"E	2°52'32"
C4	13.79'	275.00'	6.90'	13.79'	S67°33'52"E	2°52'23"
C5	15.88'	405.00'	7.94'	15.88'	N67°53'37"W	2°14'46"
C6	13.92'	355.00'	6.96'	13.92'	N67°53'37"W	2°14'46"
C7	18.82'	375.00'	9.41'	18.82'	S67°33'48"E	2°52'32"
C8	82.43'	305.00'	41.47'	82.18'	S59°57'13"E	15°29'09"
C9	94.03'	305.00'	47.39'	93.66'	S43°22'44"E	17°39'50"
C10	35.52'	109.02'	17.92'	35.36'	N40°57'06"W	18°39'56"
C11	38.86'	109.02'	19.64'	38.65'	N60°31'22"W	20°25'15"
C12	28.81'	18.00'	18.54'	25.83'	N24°51'15"W	91°42'22"
C13	5.03'	3.00'	3.34'	4.46'	S19°05'25"W	96°07'18"
C14	66.29'	91.00'	34.69'	64.83'	S49°50'20"E	41°44'12"
C15	28.91'	18.00'	18.64'	25.90'	N63°17'08"E	92°00'53"
C16	27.01'	27.00'	14.76'	25.90'	N41°33'38"E	57°19'17"
C17	27.18'	27.00'	14.87'	26.05'	S80°56'08"E	57°41'11"
C18	199.62'	355.00'	102.52'	197.00'	N50°39'42"W	32°13'04"

CONDOMINIUM PLAT  
OF  
SECTION 6E  
(A PORTION OF PHASE II)  
BRANDON WOODS  
JAMES CITY COUNTY, VIRGINIA  
SCALE: 1"=50' DATE: 8/22/05  
SHEET 2 OF 4

**LANDMARK DESIGN GROUP**  
Engineers • Planners • Surveyors  
Landscape Architects • Environmental Consultants  
4029 IRONBOUND ROAD SUITE 100  
WILLIAMSBURG, VA 23188  
TEL (757) 253-2975 FAX(757) 229-0049



4 Large (8 1/2" x 11") Plats Recorded  
herein as # 050020428  
ESTY B. WOOLDRIDGE, CLERK  
STATE OF VIRGINIA, COUNTY OF JAMES CITY  
IN THE CLERK'S OFFICE OF THE CIRCUIT COURT THE PLAT  
SHOWN HEREON WAS PRESENTED AND ADMITTED TO RECORD  
8:30:2005 at 2:28 PM AS THE LAW DIRECTS.  
TESTEE: *Sebastian Hallman* DDP.  
CLERK  
DOCUMENT NO. 050020428



DRAWN BY: PF  
CHKD BY: AST  
PROJ. NO.: 1980074-000.62  
DWG. NO.: 16.342W