

#050020150

N/F
HIDDEN ACRES FARM, INC.
TAX PARCEL (23-3)(1-1)
D.B. 152, PG. 792

LINE TABLE FOR AREA #1

LINE	LENGTH	BEARING
L1	5.70'	N26°12'56"W
L2	27.27'	N01°01'06"E
L3	17.70'	N43°39'02"E
L4	21.72'	N36°01'49"W
L5	19.64'	N61°48'06"E
L6	40.02'	N24°20'47"E
L7	14.23'	N19°49'49"W
L8	20.17'	N46°54'16"E
L9	21.96'	N53°04'55"E
L10	47.28'	N30°19'00"E
L11	34.25'	N53°01'07"E
L12	66.74'	N49°23'42"E
L13	42.19'	N77°45'44"E
L14	47.81'	N86°19'08"E
L15	15.20'	S51°25'49"E
L16	166.69'	S38°34'11"W

LINE TABLE FOR AREA #8

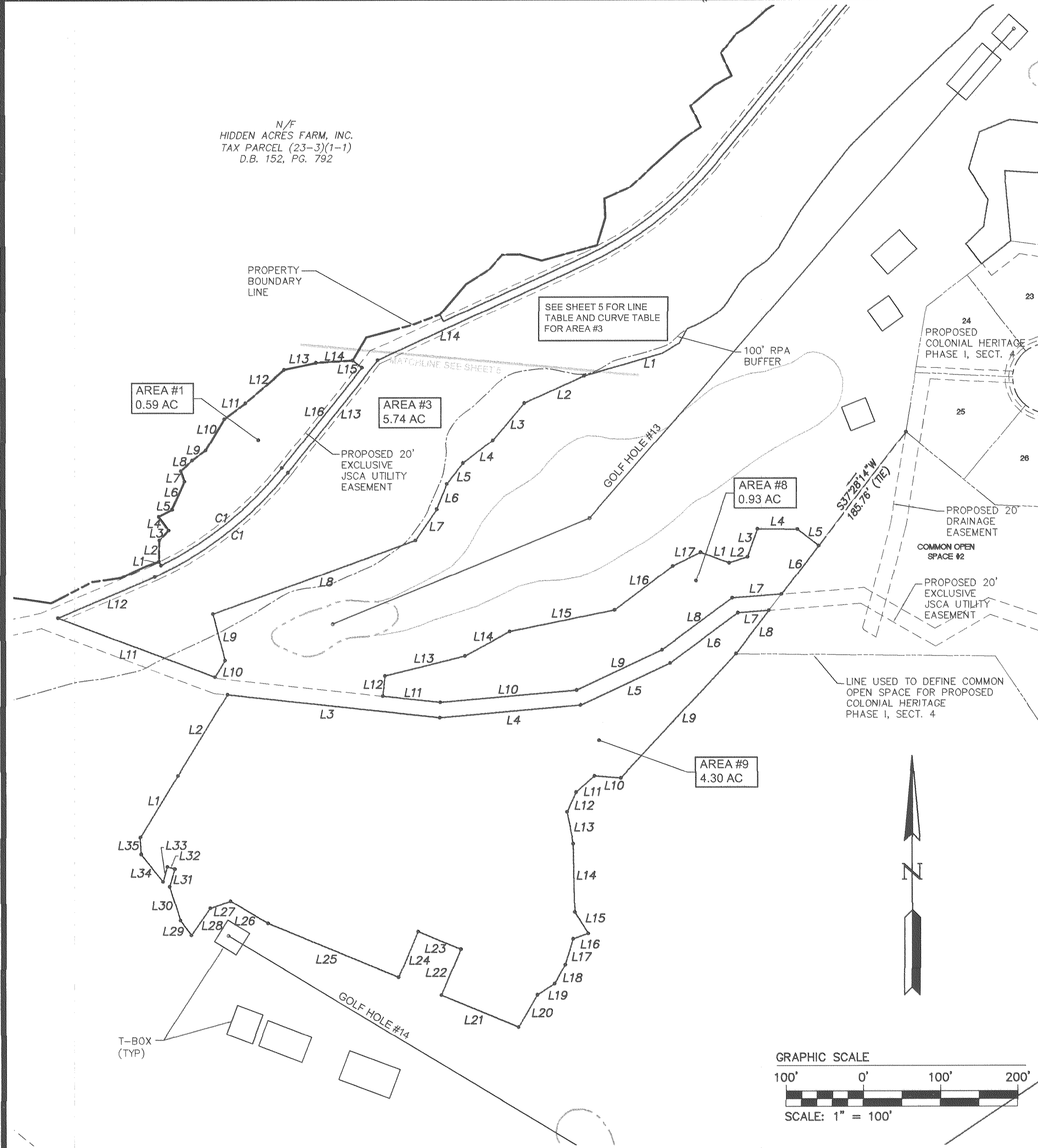
LINE	LENGTH	BEARING
L1	39.36'	S69°53'29"E
L2	24.96'	N71°53'24"E
L3	38.04'	N19°52'38"E
L4	51.74'	S89°34'03"E
L5	34.91'	S52°31'46"E
L6	78.74'	S37°28'14"W
L7	64.04'	S85°36'24"W
L8	113.40'	S53°28'41"W
L9	122.37'	S64°48'32"W
L10	177.23'	S84°54'40"W
L11	74.82'	N83°41'23"W
L12	26.42'	N06°18'37"E
L13	106.70'	N76°09'12"E
L14	66.54'	N61°24'57"E
L15	138.63'	N78°26'57"E
L16	93.98'	N52°41'10"E
L17	40.09'	N63°44'30"E

LINE TABLE FOR AREA #9

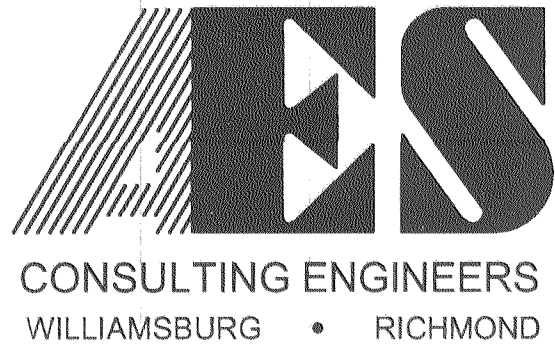
LINE	LENGTH	BEARING
L1	93.17'	N31°28'43"E
L2	123.52'	N31°28'43"E
L3	277.05'	S83°41'23"E
L4	182.77'	N84°54'40"E
L5	127.90'	N64°48'32"E
L6	109.62'	N53°28'41"E
L7	40.36'	N85°36'24"E
L8	70.80'	S37°28'14"W
L9	219.68'	S42°48'34"W
L10	34.35'	N85°38'05"W
L11	31.62'	S48°30'34"W
L12	27.92'	S24°49'48"W
L13	42.24'	S11°07'54"E
L14	88.67'	S00°59'11"E
L15	32.72'	S31°54'42"E
L16	20.71'	S70°11'33"W
L17	35.24'	S16°49'39"W
L18	27.94'	S28°16'36"W
L19	26.58'	S57°11'07"W
L20	48.31'	S30°15'13"W
L21	108.25'	N67°26'49"W
L22	64.49'	N22°36'17"E
L23	60.00'	N67°23'43"W
L24	64.48'	S22°36'17"W
L25	183.48'	N67°23'43"W
L26	56.17'	N59°03'02"W
L27	28.42'	S71°15'20"W
L28	42.78'	S34°57'10"W
L29	23.97'	N36°18'20"W
L30	45.86'	N16°46'49"W
L31	23.96'	N16°13'59"E
L32	10.00'	N73°46'01"W
L33	20.16'	S18°13'59"W
L34	45.45'	N38°49'37"W
L35	22.20'	N03°07'28"W

CURVE TABLE FOR AREA #1

CURVE	DELTA	RADIUS	ARC	TANGENT	CHORD	CHORD BEARING
C1	24°51'59"	468.65	203.21	103.23	201.62	N51°21'04"E



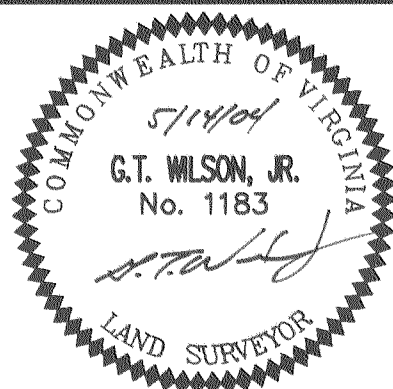
S:\Jobs\888111-A_Golf.dwg\Plats\8881-11p06.dwg, 9/8/2004 11:34:50 AM, heb



5248 Olde Towne Road, Suite 1
Williamsburg, Virginia 23188
(757) 253-0040
Fax (757) 220-8994

**PLAT OF NATURAL OPEN SPACE
& CONSERVATION EASEMENTS
COLONIAL HERITAGE**
PORTIONS OF GOLF COURSE HOLES 1-18
FOR CONVEYANCE TO JAMES CITY COUNTY

STONEHOUSE DISTRICT JAMES CITY COUNTY VIRGINIA



City of Williamsburg & County of James City
Circuit Court: This PLAT was recorded on 8-26-2005
at 12:45 PM, PG. 1
DOCUMENT # 050020150
BETSY B. WOOLRIDGE, CLERK
Betsy B. Woolridge Clerk

No.	DATE	REVISION / COMMENT / NOTE	BY
1	9/7/04	REVISED PER COUNTY COMMENTS	HWP

Designed AES	Drawn AES
Scale 1"=100'	Date 5/14/04
Project No. 8881-11H	
Drawing No. 6 OF 7	

7
050020150

Large/Small Plat(s) Recorded
herewith as # _____