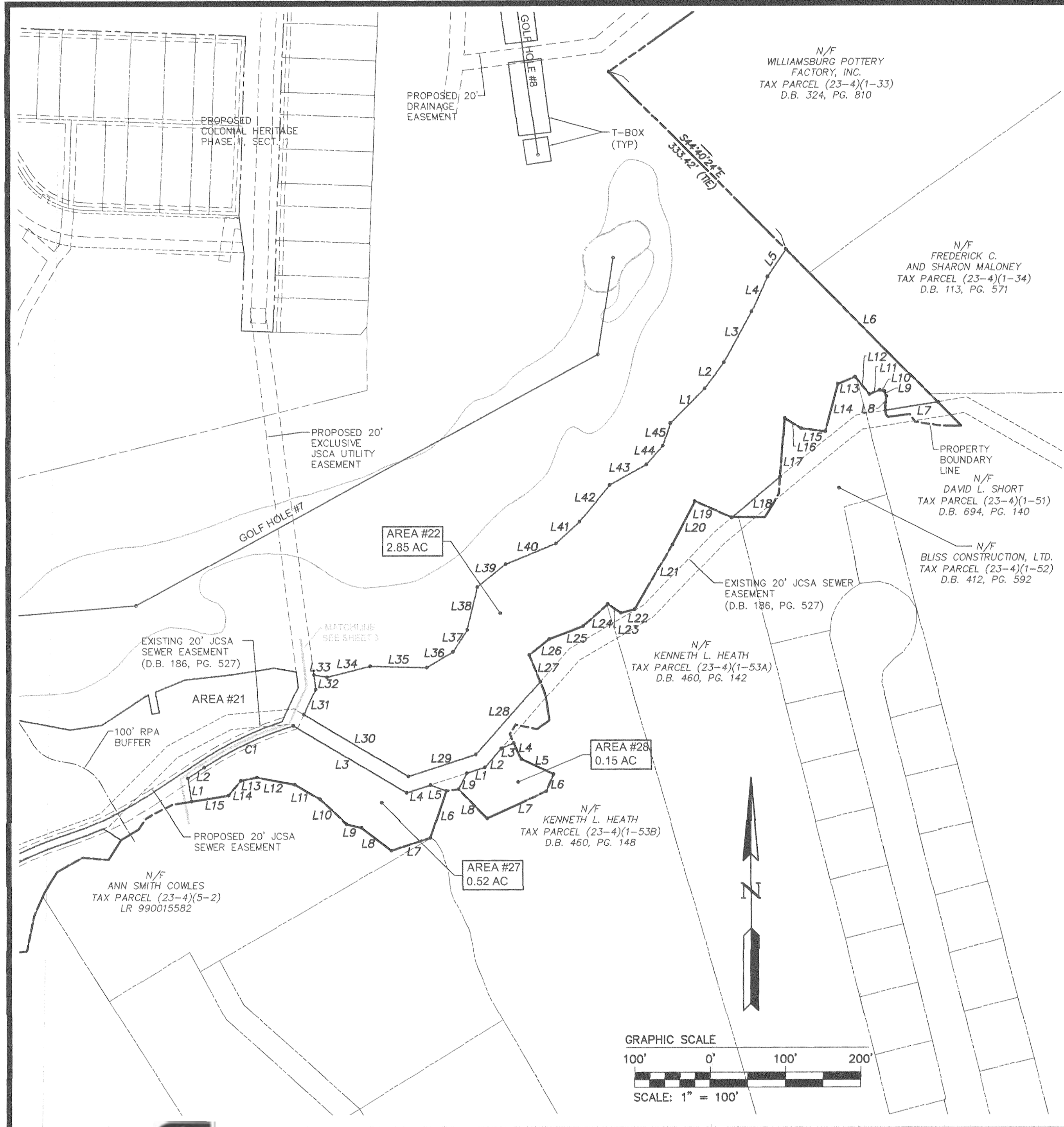


#050020150



LINE TABLE FOR AREA #22

LINE	LENGTH	BEARING
L1	65.03'	N44°43'24"E
L2	43.69'	N36°48'45"E
L3	76.93'	N28°34'31"E
L4	51.03'	N24°05'09"E
L5	43.83'	N34°18'36"E
L6	286.62'	S44°40'24"E
L7	70.49'	S80°55'40"W
L8	19.15'	N03°55'04"E
L9	7.12'	N22°08'32"W
L10	6.00'	N77°20'40"W
L11	14.98'	S68°00'58"W
L12	30.24'	N39°08'52"W
L13	24.86'	S67°33'24"W
L14	65.19'	S15°05'34"W
L15	32.32'	N83°06'18"W
L16	25.79'	N57°43'21"W
L17	78.63'	S04°18'02"W
L18	84.08'	S50°05'45"W
L19	53.76'	N66°02'10"W
L20	65.06'	S27°32'28"W
L21	99.46'	S30°03'19"W
L22	18.94'	S75°17'18"W
L23	20.99'	N55°57'47"W
L24	44.02'	S47°57'01"W
L25	48.98'	S69°12'24"W
L26	34.02'	S51°23'31"W
L27	38.56'	S22°18'34"E
L28	128.85'	S41°31'19"W
L29	94.79'	S71°59'57"W
L30	161.35'	N59°07'16"W
L31	36.80'	N24°56'44"E
L32	19.44'	N07°23'33"W
L33	17.81'	S80°03'43"E
L34	59.06'	N75°45'20"E
L35	75.51'	S88°31'01"E
L36	40.69'	N58°58'52"E
L37	35.00'	N33°04'59"E
L38	58.60'	N13°31'47"E
L39	48.35'	N50°35'25"E
L40	72.26'	N67°42'30"E
L41	42.64'	N47°21'31"E
L42	63.57'	N39°57'47"E
L43	55.82'	N60°45'34"E
L44	33.47'	N41°10'46"E
L45	31.26'	N17°24'41"E

LINE TABLE FOR AREA #27

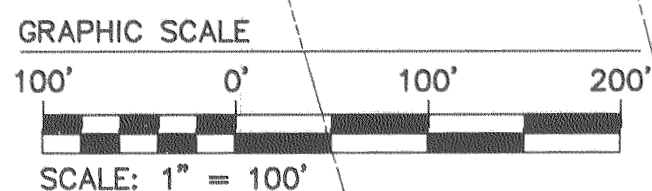
LINE	LENGTH	BEARING
L1	31.35'	N09°17'16"W
L2	26.37'	N56°37'04"E
L3	174.78'	S59°07'16"E
L4	33.35'	N71°59'57"E
L5	22.61'	S69°32'03"E
L6	65.09'	S18°45'07"W
L7	54.53'	S71°56'10"W
L8	50.05'	N52°31'13"W
L9	20.40'	N76°38'37"W
L10	48.57'	N47°41'52"W
L11	38.67'	N59°48'47"W
L12	51.22'	N79°03'19"W
L13	21.97'	S78°26'11"W
L14	25.34'	S39°48'19"W
L15	49.95'	S80°42'44"W

LINE TABLE FOR AREA #28

LINE	LENGTH	BEARING
L1	25.11'	N71°59'57"E
L2	33.81'	N41°31'19"E
L3	18.23'	N66°15'03"E
L4	23.64'	S23°44'57"E
L5	47.37'	S64°59'31"E
L6	25.04'	S23°30'17"W
L7	86.40'	S65°19'46"W
L8	54.59'	N44°14'50"W
L9	23.93'	N27°47'21"E

CURVE TABLE FOR AREA #27

CURVE	DELTA	RADIUS	ARC	TANGENT	CHORD	CHORD BEARING
C1	16°58'32"	445.00	131.84	66.41	131.38	N65°06'20"E



Large/Small Plats Recorded herewith as # 050020150

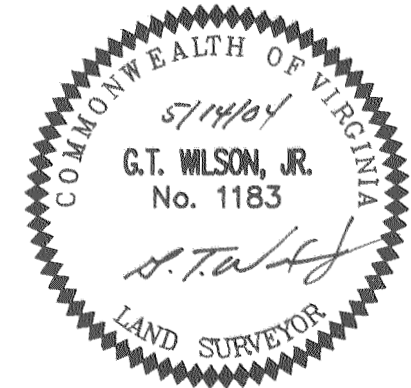
S:\Jobs\888111-A_Golf.dwg\Plats\8881-11p04.dwg, 9/8/2004 10:38:42 AM, heb

CONSULTING ENGINEERS
WILLIAMSBURG • RICHMOND

5248 Olde Towne Road, Suite 1
Williamsburg, Virginia 23188
(757) 253-0040
Fax (757) 220-8994

PLAT OF NATURAL OPEN SPACE & CONSERVATION EASEMENTS
COLONIAL HERITAGE
PORTIONS OF GOLF COURSE HOLES 1-18
FOR CONVEYANCE TO JAMES CITY COUNTY

STONEHOUSE DISTRICT JAMES CITY COUNTY VIRGINIA



City of Williamsburg & County of James City
Circuit Court: This PLAT was recorded on
8-26-2005
at 12:45 PM, PB PG
DOCUMENT # 050020150
BETSY B. WOOLRIDGE, CLERK
Betsy B. Woolridge Clerk

No.	DATE	REVISION / COMMENT / NOTE	BY
1	9/7/04	REVISED PER COUNTY COMMENTS	HWP

Designed	Drawn
AES	AES
Scale	Date
1"=100'	5/14/04
Project No.	
8881-11H	
Drawing No.	
4 OF 7	