

#050020150

LINE TABLE FOR AREA #18

LINE	LENGTH	BEARING
L1	45.25'	S23°03'52"E
L2	154.67'	S66°48'03"E
L3	75.36'	S50°47'37"E
L4	27.16'	S65°41'34"E
L5	212.32'	S51°31'38"E
L6	23.36'	S69°09'20"E
L7	10.00'	S21°28'02"E
L8	91.73'	S88°31'58"W
L9	517.61'	N51°23'19"W
L10	30.57'	N38°28'22"E
L11	36.12'	S86°22'49"E

LINE TABLE FOR AREA #19

LINE	LENGTH	BEARING
L1	70.08'	S21°06'49"W
L2	270.23'	N88°32'19"W
L3	10.00'	N01°27'41"E
L4	75.20'	N81°20'12"E
L5	56.06'	N86°28'10"E
L6	19.51'	N42°14'06"E
L7	33.83'	N65°42'51"E
L8	38.72'	N71°17'38"E
L9	44.49'	N84°40'38"E
L10	25.93'	S80°16'15"E
L11	15.89'	S64°36'19"E

LINE TABLE FOR AREA #20

LINE	LENGTH	BEARING
L1	24.13'	S56°27'02"E
L2	19.37'	S43°52'09"E
L3	33.74'	S29°07'11"E
L4	71.20'	N88°32'19"W
L5	58.91'	N21°06'49"E

LINE TABLE FOR AREA #21

LINE	LENGTH	BEARING
L1	42.59'	N67°54'35"E
L2	60.17'	N83°53'00"E
L3	59.33'	N81°15'48"E
L4	29.88'	S80°03'43"E
L5	20.58'	S07°01'25"E
L6	50.21'	S24°56'44"W
L7	80.09'	S56°37'04"W
L8	9.03'	S71°52'51"W
L9	65.41'	S63°20'40"W
L10	107.04'	N31°22'22"W
L11	26.15'	N79°54'44"W
L12	12.33'	N70°03'08"E
L13	9.61'	N54°21'32"E
L14	18.50'	N47°59'19"E
L15	7.06'	N54°47'47"E
L16	10.25'	N61°19'35"E
L17	30.92'	N70°16'47"E
L18	24.46'	N73°25'13"E
L19	27.70'	N00°27'47"W
L20	17.19'	N44°41'10"W
L21	43.37'	N09°32'53"E
L22	28.96'	N40°35'08"E
L23	31.39'	N64°41'05"E
L24	14.72'	N10°34'25"E
L25	18.82'	N40°46'39"W
L26	29.68'	N47°27'48"W
L27	79.87'	N20°34'02"W
L28	34.06'	N04°11'17"E
L29	16.98'	N02°54'29"W
L30	73.50'	N87°05'31"E
L31	53.87'	S78°54'24"E
L32	57.86'	S61°48'28"E
L33	61.05'	N87°49'54"E
L34	47.99'	S46°45'05"E
L35	34.58'	S73°58'08"E
L36	41.96'	S89°42'25"E
L37	88.70'	N74°28'26"E
L38	28.90'	N58°04'58"E
L39	72.14'	S79°21'26"E

CONT. LINE TABLE FOR AREA #21

LINE	LENGTH	BEARING
L40	42.64'	N81°48'18"E
L41	73.61'	N57°03'11"E
L42	25.82'	S10°57'02"E
L43	10.00'	N79°02'58"E
L44	27.99'	N10°57'02"W

LINE TABLE FOR AREA #23

LINE	LENGTH	BEARING
L1	122.77'	N68°31'58"E
L2	336.30'	S88°32'19"E
L3	26.55'	S21°06'49"W
L4	35.48'	N28°24'28"W
L5	84.47'	S60°55'26"W
L6	167.29'	N51°23'19"W

LINE TABLE FOR AREA #24

LINE	LENGTH	BEARING
L1	102.32'	S88°32'19"E
L2	97.13'	S31°22'22"E
L3	163.06'	N66°30'29"W
L4	27.01'	N21°06'49"E

LINE TABLE FOR AREA #25

LINE	LENGTH	BEARING
L1	49.44'	N29°04'34"W
L2	174.89'	S66°30'29"E
L3	19.84'	N70°15'31"E
L4	49.87'	S31°22'22"E
L5	8.52'	S81°21'38"W
L6	35.81'	N68°26'52"W
L7	31.33'	N85°13'52"W
L8	44.22'	N81°26'53"W
L9	64.62'	S53°31'03"W
L10	24.67'	S66°30'44"W
L11	32.17'	S69°44'21"W
L12	26.48'	S75°47'30"W
L13	47.37'	N51°41'25"W
L14	87.24'	S85°52'54"W
L15	41.24'	S55°10'53"W

LINE TABLE FOR AREA #26

LINE	LENGTH	BEARING
L1	151.33'	N31°22'22"W
L2	65.41'	N63°20'40"E
L3	9.03'	N71°52'51"E
L4	28.27'	S57°23'16"E
L5	30.86'	S32°36'44"W
L6	35.19'	N85°29'45"W
L7	38.58'	S80°38'06"W
L8	32.55'	S32°32'57"W
L9	33.97'	S23°42'59"W
L10	48.56'	S11°45'40"W
L11	11.97'	S84°04'38"W
L12	30.83'	S43°20'26"W
L13	33.22'	S64°22'29"W
L14	92.78'	S23°37'13"W
L15	44.44'	S70°13'15"W
L16	39.41'	S41°08'31"W
L17	48.37'	S84°31'26"W
L18	53.19'	S40°45'29"W
L19	64.72'	S85°16'33"W
L20	24.02'	N74°38'21"W
L21	30.94'	S87°52'34"W
L22	22.52'	S68°32'34"W
L23	27.90'	N63°07'41"W
L24	35.12'	S47°51'45"W

CURVE TABLE FOR AREA #21

CURVE	DELTA	RADIUS	ARC	TANGENT	CHORD	CHORD BEARING
C1	15°20'33"	455.00	121.84	61.29	121.47	S64°17'20"W
C2	15°15'48"	445.00	118.55	59.63	118.19	S64°14'57"W
C3	8°32'11"	505.00	75.24	37.69	75.17	S67°36'46"W
C4	12°32'39"	455.00	99.62	50.01	99.42	S57°04'20"W
C5	20°05'45"	442.71	155.27	78.44	154.48	S51°15'22"W
C6	13°57'53"	1012.77	246.78	124.01	246.17	S80°45'40"W

CURVE TABLE FOR AREA #23

CURVE	DELTA	RADIUS	ARC	TANGENT	CHORD	CHORD BEARING
C1	11°15'15"	1240.00	243.56	122.17	243.17	S64°11'51"W

CURVE TABLE FOR AREA #24

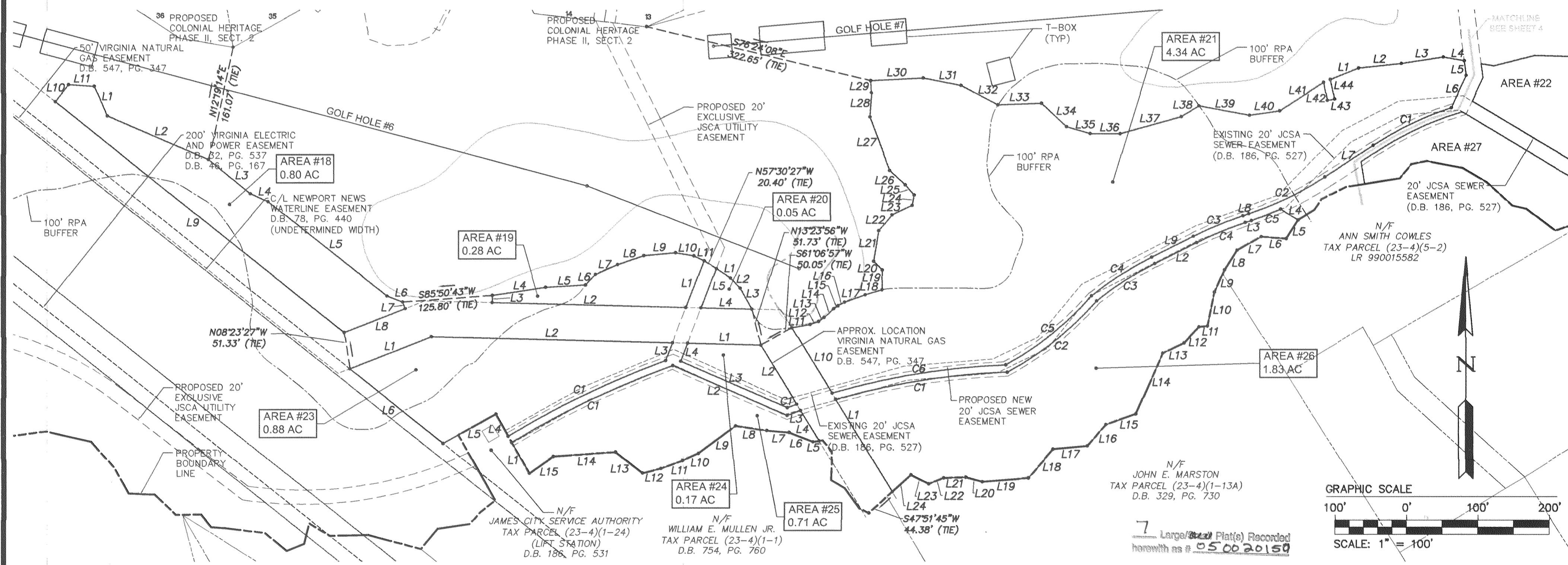
CURVE	DELTA	RADIUS	ARC	TANGENT	CHORD	CHORD BEARING
C1	0°48'19"	985.02	13.84	6.92	13.84	S70°18'46"W

CURVE TABLE FOR AREA #25

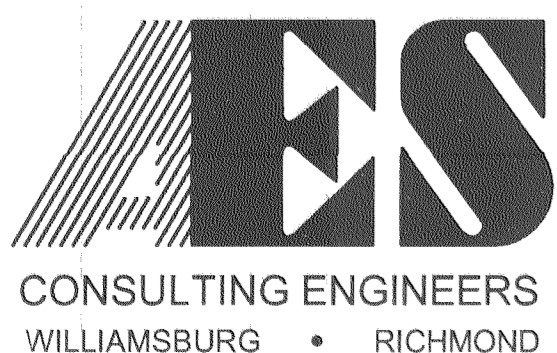
CURVE	DELTA	RADIUS	ARC	TANGENT	CHORD	CHORD BEARING
C1	11°36'11"	1230.00	249.09	124.97	248.66	N64°20'36"E

CURVE TABLE FOR AREA #26

CURVE	DELTA	RADIUS	ARC	TANGENT	CHORD	CHORD BEARING
C1	13°56'23"	1002.77	243.97	122.59	243.37	S80°54'21"W
C2	20°17'17"	452.71	160.30	81.00	159.47	N51°27'35"E
C3	12°26'10"	445.00	96.60	48.49	96.41	S57°07'33"W
C4	8°32'11"	495.00	73.75	36.94	73.68	S67°36'46"W
C5	5°35'37"	455.00	44.42	22.23	44.40	N69°05'02"E



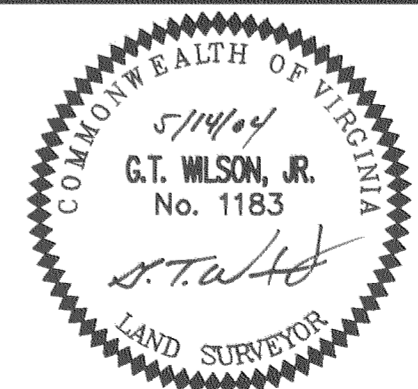
S:\Jobs\888111-A_Golf.dwg\Plats\8881-11p03.dwg, 9/8/2004 10:36:36 AM, heb



5248 Olde Towne Road, Suite 1
Williamsburg, Virginia 23188
(757) 253-0040
Fax (757) 220-8994

**PLAT OF NATURAL OPEN SPACE
& CONSERVATION EASEMENTS
COLONIAL HERITAGE**
PORTIONS OF GOLF COURSE HOLES 1-18
FOR CONVEYANCE TO JAMES CITY COUNTY

STONEHOUSE DISTRICT JAMES CITY COUNTY VIRGINIA



City of Williamsburg & County of James City	
Circuit Court: This PLAT was recorded on 8-26-2005	
at 12:45 P.M. PG. 1	
DOCUMENT # 050020150	
BETSY B. WOOLRIDGE, CLERK	
Betsy B. Woolridge Clerk	
1	9/7/04
REVISED PER COUNTY COMMENTS	
No.	DATE
REVISION / COMMENT / NOTE	
	BY
	HWP

Designed	Drawn
AES	AES
Scale	Date
1"=100'	5/14/04
Project No.	
8881-11H	
Drawing No.	
3 OF 7	