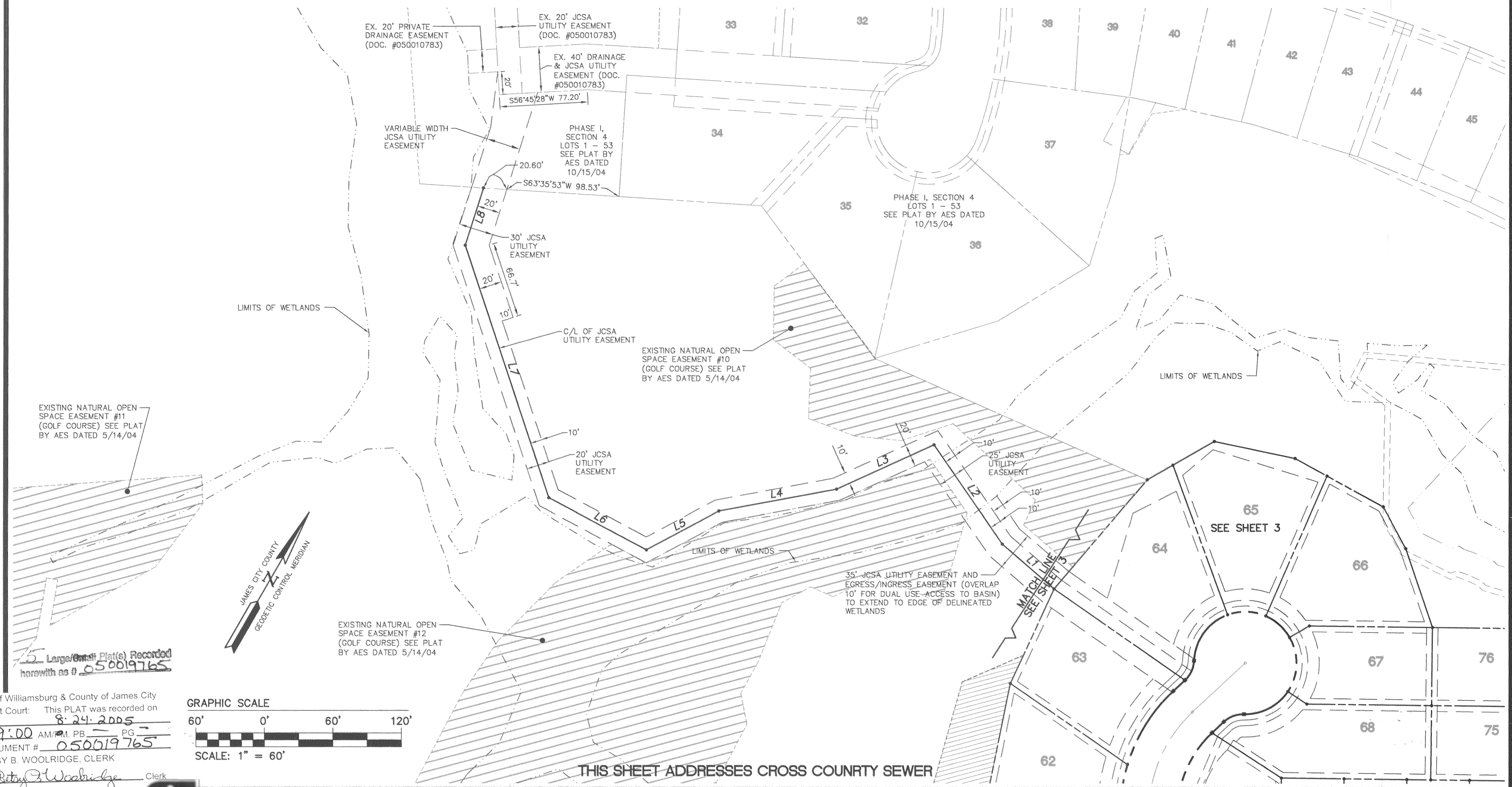


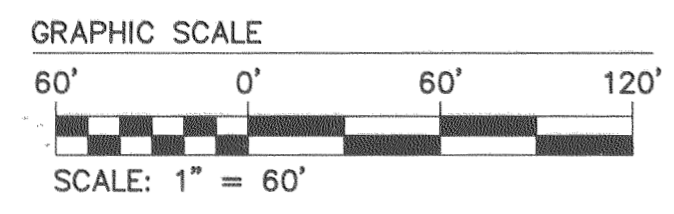
#050019765

HATCHING INDICATES AREA OF UNDISTURBED NATURAL OPEN SPACE EASEMENT (SEE SHEET 4)

LINE	DIRECTION	LENGTH
L1	N79°16'33"W	59.48'
L2	N64°42'27"W	105.48'
L3	S35°29'42"W	93.81'
L4	S49°23'47"W	105.00'
L5	S31°54'05"W	72.00'
L6	S88°00'10"W	97.00'
L7	N48°27'03"W	233.00'
L8	N12°26'48"W	52.79'

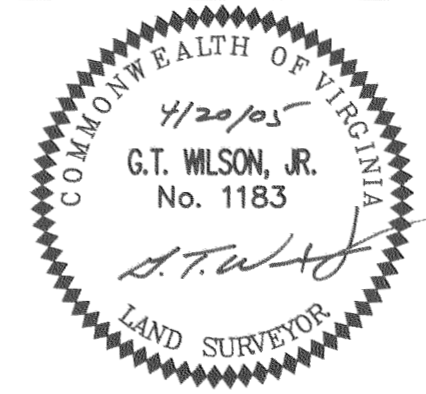


Large/Small Plat(s) Recorded herewith as # 050019765
 City of Williamsburg & County of James City Circuit Court: This PLAT was recorded on 8-24-2005 at 9:00 AM/P.M. PG. DOCUMENT # 050019765 BETSY B. WOOLRIDGE, CLERK
 Betsy B. Woolridge Clerk



5248 Olde Towne Road, Suite 1
 Williamsburg, Virginia 23188
 (757) 253-0040 Fax (757) 220-8994

PLAT OF SUBDIVISION
COLONIAL HERITAGE
 PHASE ONE, SECTION FIVE
 LOTS 31-84
 PREPARED FOR COLONIAL HERITAGE LLC
 STONEHOUSE DISTRICT JAMES CITY COUNTY VIRGINIA



No.	DATE	REVISION / COMMENT / NOTE	BY
2	8/17/05	CHANGED SIDE & REAR BUILDING SETBACKS FROM 3 FEET TO 5 FEET	AWT
1	5/23/05	REVISED PER JCC COMMENT LETTER DATED 5/17/05	AWT

Designed AES	Drawn HEB
Scale 1"=60'	Date 4/20/05
Project No. 8881-18	
Drawing No. 5 OF 5	