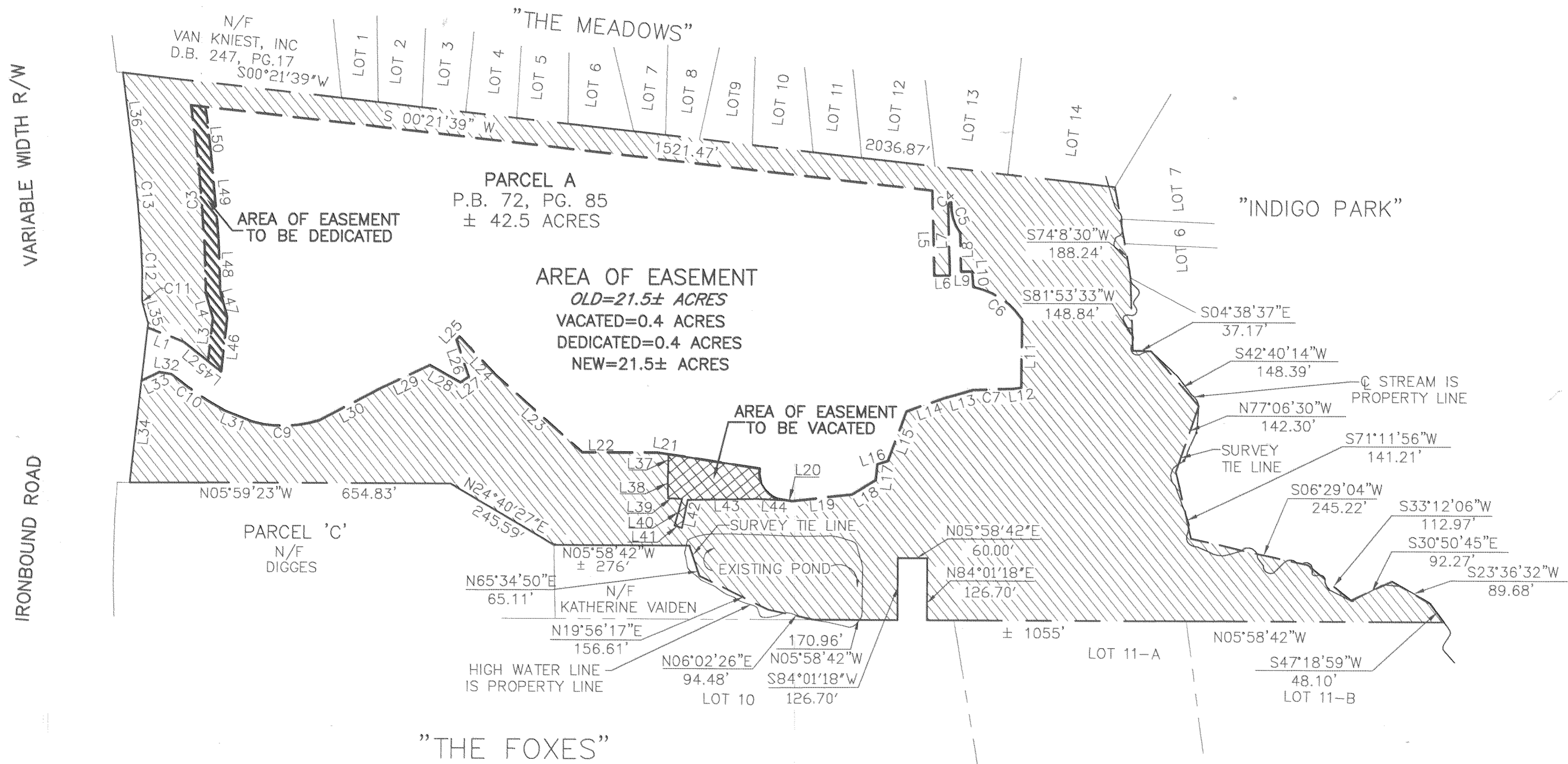


#050019008

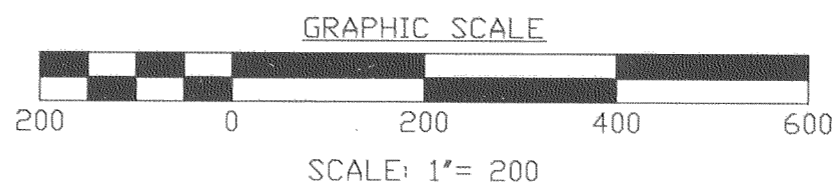
LINE TABLE		
LINE	LENGTH	BEARING
L1	79.18'	S15°08'14"W
L2	63.08'	S32°29'21"W
L3	88.59'	S89°37'23"E
L4	52.46'	N67°53'46"E
L5	173.93'	S82°25'55"W
L6	31.81'	S07°34'05"E
L7	141.99'	N82°25'55"E
L8	78.67'	S82°25'55"W
L9	22.50'	S05°59'24"E
L10	31.75'	S79°00'14"W
L11	139.99'	S84°13'47"W
L12	17.85'	N14°20'57"W
L13	56.83'	N21°47'15"W
L14	85.32'	N25°37'46"W
L15	108.08'	N75°43'07"W
L16	22.44'	N24°24'50"W
L17	31.66'	N89°54'39"W
L18	57.00'	N37°56'53"W
L19	122.95'	N12°35'52"W
L20	30.57'	N02°54'40"E
L21	209.57'	N02°34'53"E
L22	153.94'	N05°58'42"W
L23	234.11'	N35°41'10"E
L24	111.20'	N40°12'03"E
L25	8.79'	N52°44'13"W
L26	79.63'	S65°28'58"W
L27	20.18'	N41°13'54"W
L28	71.97'	N23°25'53"E
L29	114.46'	N31°40'00"W
L30	137.36'	N33°54'33"W
L31	61.49'	N15°36'05"E
L32	25.23'	N02°48'02"E
L33	40.23'	N31°55'42"W
L34	327.19'	S89°37'23"E
L35	44.05'	N67°53'46"E
L36	180.22'	N76°57'17"E
L37	55.13'	S85°25'48"W
L38	34.12'	S81°55'35"W
L39	28.61'	S03°38'05"E
L40	57.64'	N80°29'34"W
L41	15.54'	S11°11'31"W
L42	59.14'	S84°51'57"E
L43	142.66'	S06°57'44"E
L44	59.37'	S03°32'40"E
L45	34.24'	S32°29'21"W
L46	112.55'	S89°37'23"E
L47	54.58'	N67°53'46"E
L48	110.62'	N82°14'00"E
L49	175.95'	N78°32'57"E
L50	91.48'	N76°57'17"E



CURVE TABLE						
CURVE	LENGTH	RADIUS	TANGENT	CHORD BEARING	CHORD	DELTA
C3	386.00'	2799.61'	193.30'	N79°13'33"E	385.69'	7°53'59"
C4	10.99'	5.70'	8.21'	S56°05'20"E	9.37'	110°24'34"
C5	66.29'	107.61'	34.23'	S67°39'23"W	65.25'	35°17'42"
C6	121.96'	151.48'	64.50'	N27°09'12"E	118.69'	46°07'45"
C7	81.33'	1142.48'	40.68'	N08°15'39"W	81.32'	4°04'44"
C9	139.75'	237.71'	71.96'	N07°24'34"W	137.74'	33°41'03"
C10	130.88'	665.04'	65.65'	N28°32'44"E	130.67'	11°16'34"
C11	6.19'	33.63'	3.11'	N79°47'37"E	6.19'	10°33'07"
C12	117.46'	1329.79'	58.77'	N82°32'21"E	117.42'	5°03'39"
C13	167.85'	3297.43'	83.95'	N78°33'02"E	167.84'	2°55'00"

Large/Small Plat(s) Recorded herewith as # 050019008

City of Williamsburg & County of James City Circuit Court: This PLAT was recorded on 17 August 2005 at 11:09 AM/PM, PG. DOCUMENT # 050019008 Betsy B. Woolridge, Clerk



AMENDED EASEMENT PLAT SHOWING CONSERVATION EASEMENT FOR NATURAL OPEN SPACE ON THE PROPERTY OF CATHOLIC DIOCESE OF RICHMOND

JAMES CITY COUNTY, VIRGINIA DATE: 03/15/05 SCALE: 1"=200'

LANDMARK DESIGN GROUP
 Engineers • Planners • Surveyors
 Landscape Architects • Environmental Consultants

4029 Ironbound Road Suite 100 Williamsburg, VA 23188 Tel. (757) 253-2975 Fax (757) 229-0049 Email: lmdg@landmarkdg.com

5544 Greenwich Road Suite 200 Virginia Beach, VA 23462 Tel. (757) 473-2000 Fax (757) 497-7933 Email: lmdg@landmarkdg.com