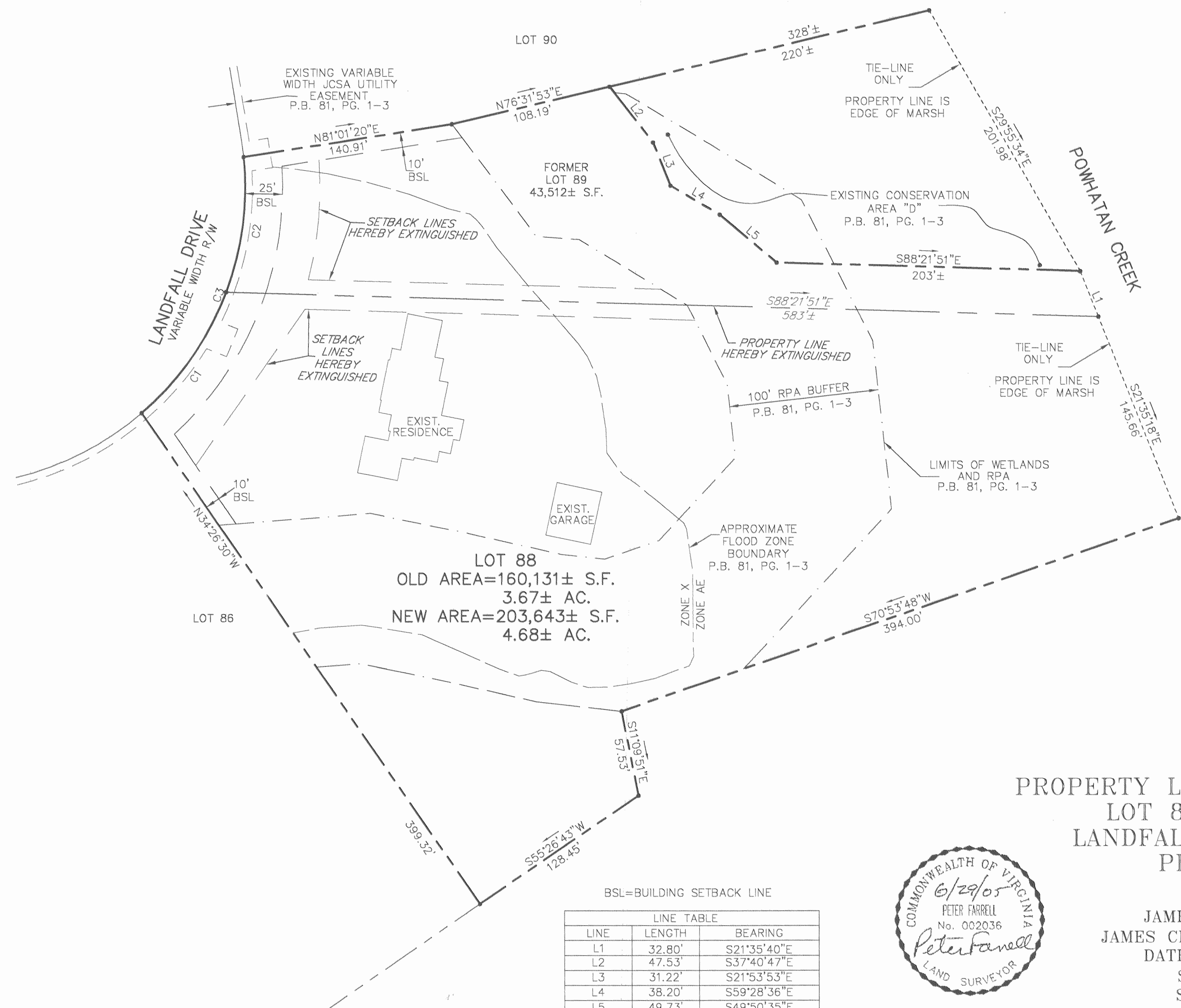


#050017936



City of Williamsburg & County of James City
 Circuit Court: This PLAT was recorded on
 at 10:09 AM/PM, PG. 44 August 2005
 DOCUMENT # 050017936
 BETSY B. WOOLRIDGE, CLERK
Betsy B. Woolridge Clerk

PLAT OF
 PROPERTY LINE EXTINGUISHMENT
 LOT 88 AND LOT 89
 LANDFALL AT JAMESTOWN
 PHASE FOUR

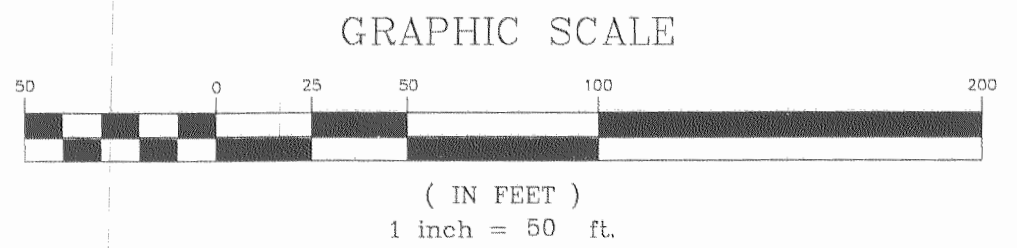
JAMESTOWN DISTRICT,
 JAMES CITY COUNTY, VIRGINIA
 DATE: JUNE 29, 2005
 SCALE: 1"=50'
 SHEET 2 OF 2



BSL=BUILDING SETBACK LINE

LINE TABLE		
LINE	LENGTH	BEARING
L1	32.80'	S21°35'40"E
L2	47.53'	S37°40'47"E
L3	31.22'	S21°53'53"E
L4	38.20'	S59°28'36"E
L5	49.73'	S49°50'35"E

CURVE TABLE						
CURVE	LENGTH	RADIUS	TANGENT	CHORD	CHORD BEARING	DELTA
C1	99.77'	200.00'	50.95'	98.74'	N34°52'36"E	28°34'57"
C2	92.09'	200.00'	46.88'	91.28'	N07°23'40"E	26°22'54"
C3	191.86'	200.00'	104.03'	184.59'	N21°41'09"E	54°57'51"



2 Large/Small Plat(s) Recorded
 herewith as # 050017936

LANDMARK
DESIGN GROUP
 Engineers • Planners • Surveyors
 Landscape Architects • Environmental Consultants

4029 Ironbound Road
 Suite 100
 Williamsburg, VA 23188
 Tel. (757) 253-2975
 Fax (757) 229-0049
 Email: lmdg@landmarkdg.com

5544 Greenwich Road
 Suite 200
 Virginia Beach, VA 23462
 Tel. (757) 473-2000
 Fax (757) 497-7933
 Email: lmdg@landmarkdg.com

P.B. 85, PG. 44

20050068-000.00 Landfall Lot 88-89 Pl. Ext. Plat\Lot88-PL_Ext.dwg