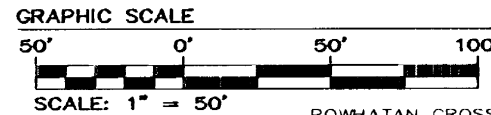


# #050017132

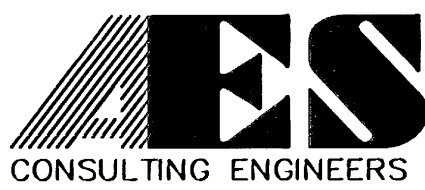
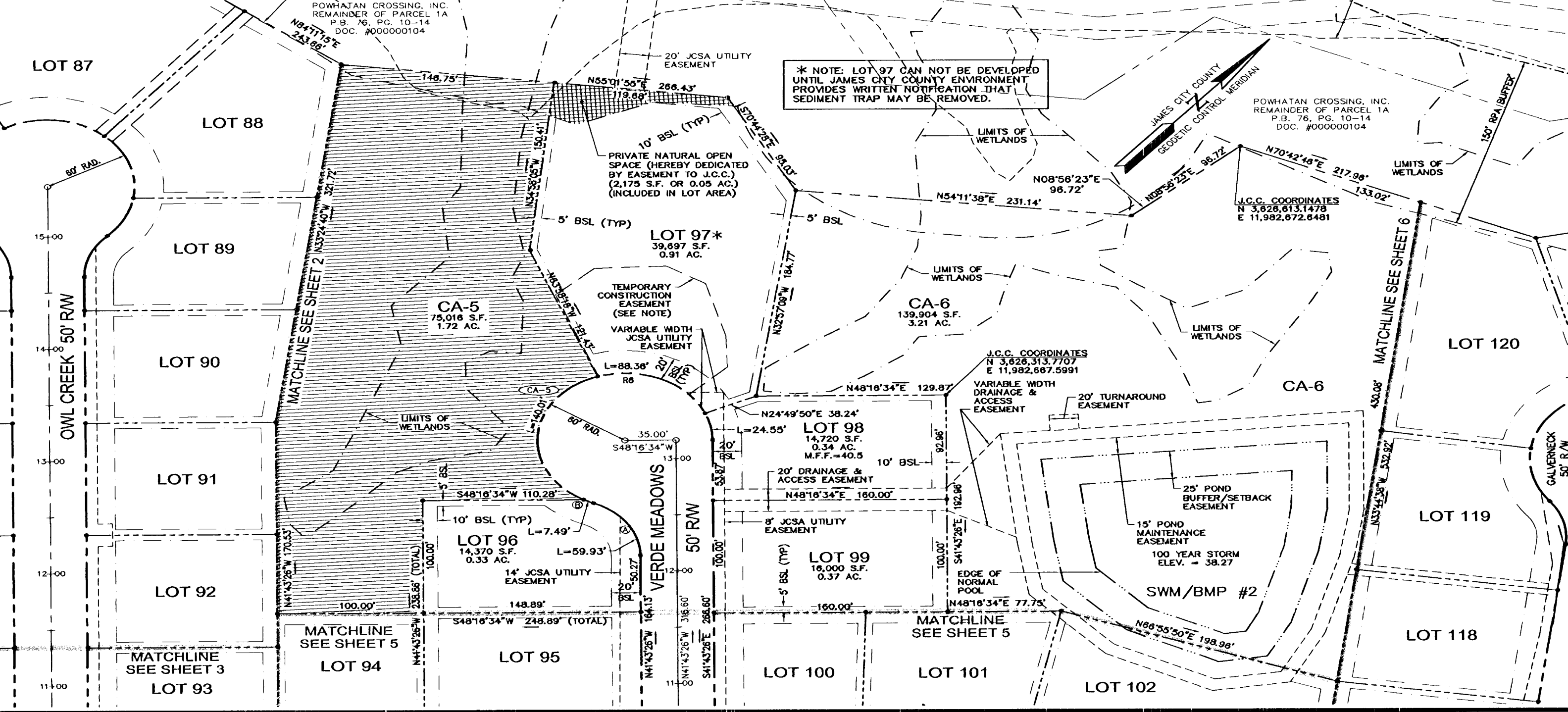
SEE SHEET 6 FOR CURVE DATA



INDICATES NATURAL OPEN SPACE: THE OPEN SPACE EASEMENTS ARE TO BE DEDICATED BY EASEMENT TO JAMES CITY COUNTY. 284,406 S.F. OR 6.53 AC.

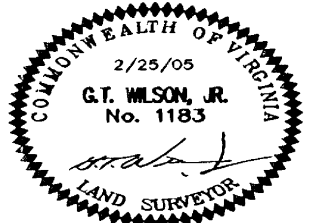
THIS SHEET ADDRESSES LOTS 96-99

6 Large/Small Plat(s) Recorded herewith as # 050017132  
 City of Williamsburg & County of James City Circuit Court The PLAT was recorded on 27 July 2005 at 12:32 AM PM. PG. DOCUMENT # 050017132 BETSY B. WOOLRIDGE, CLERK  
*Betsy Woolridge* Clerk



5248 Olde Towne Road, Suite 1  
 Williamsburg, Virginia 23188  
 (757) 253-0040  
 Fax (757) 220-8994

PLAT OF SUBDIVISION  
**MONTICELLO WOODS**  
 PHASE II  
 OWNED BY: POWHATAN CROSSING, INC.  
 LOTS 74 - 112 & 114 - 129  
 BERKELEY DISTRICT JAMES CITY COUNTY VIRGINIA



No.	DATE	REVISION / COMMENT / NOTE	BY
3	7/6/05	REVISED EASEMENT LABELS PER J.C.C. COMMENTS	VMB
2	6/28/05	REVISED WETLAND DELINEATION PER J.C.C. COMMENTS	VMB
1	4/4/05	REVISED PER J.C.C. COMMENT LETTER DATED 4/1/05	VMB

Designed VMB/JAG	Drawn AWT
Scale 1"=50'	Date 2/25/05
Project No. 8130-6	
Drawing No. 4 OF 6	