

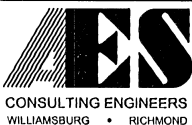
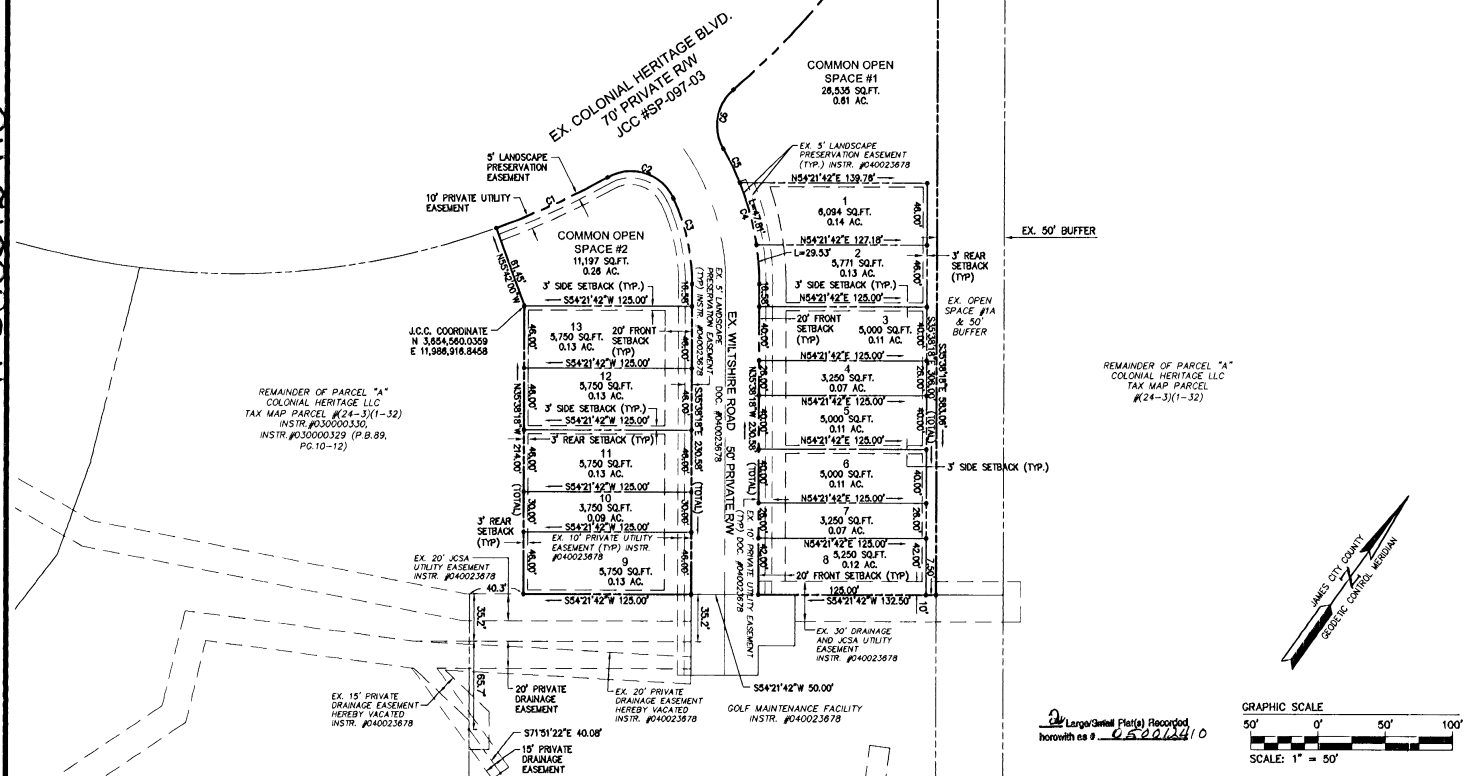
CURVE TABLE						
CURVE	DELTA	RADIUS	ARC	TANGENT	CHORD	CHORD BEARING
C1	9°12'12"	570.00	91.56	45.88	91.46	N29°41'54"E
C2	84°19'19"	35.00	57.53	37.85	51.27	N72°10'58"E
C3	25°05'55"	150.00	65.69	33.38	65.17	S43°11'05"E
C4	30°10'10"	200.00	105.31	53.91	104.10	N50°43'23"W
C5	8°00'57"	200.00	27.98	14.01	27.96	N61°48'00"W
C6	79°26'15"	35.00	48.53	29.08	44.73	N26°05'20"E
C7	26°07'09"	570.00	239.84	132.22	237.60	N00°34'13"E

LOT CURVE TABLE						
CURVE	DELTA	RADIUS	ARC	TANGENT	CHORD	CHORD BEARING
LOT 1	131°41'43"	200.00	47.81	24.02	47.69	N50°36'40"W
LOT 2	8°27'30"	200.00	29.53	14.79	29.50	N39°52'03"W

#050012410

AREA TABULATION

LOT AREA	65,368 S.F. OR 1.501 AC.±
COMMON OPEN SPACE	37,732 S.F. OR 0.866 AC.±
TOTAL AREA	103,098 S.F. OR 2.367 AC.±
NUMBER OF LOTS	13
LOTS PER ACRE	5.49



5248 Olde Towne Road, Suite 1
Williamsburg, Virginia 23188
(757) 253-0040
Fax (757) 220-8994

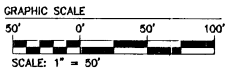
PLAT OF SUBDIVISION
COLONIAL HERITAGE
PHASE II, SECTION I LOTS 1-13
PREPARED FOR COLONIAL HERITAGE LLC

STONEHOUSE DISTRICT JAMES CITY COUNTY VIRGINIA



City of Williamsburg & County of James City
Circuit Court. This PLAT was recorded on
10/29/05 at 10:29 AM by PG
DOCUMENT # 050012410
BETSY B. WOOLDRIDGE, CLERK
Betsy B. Wooldridge, Clerk

No.	DATE	REVISION / COMMENT / NOTE	BY
1	2/3/05	REVISED PER JCSA COMMENT LETTER DATED 5/2/05	AWT



Designed	HMP	Drawn	AWT
Scale	1"=50'	Date	3/29/05
Project No.	8881-21		
Drawing No.	2 OF 2		