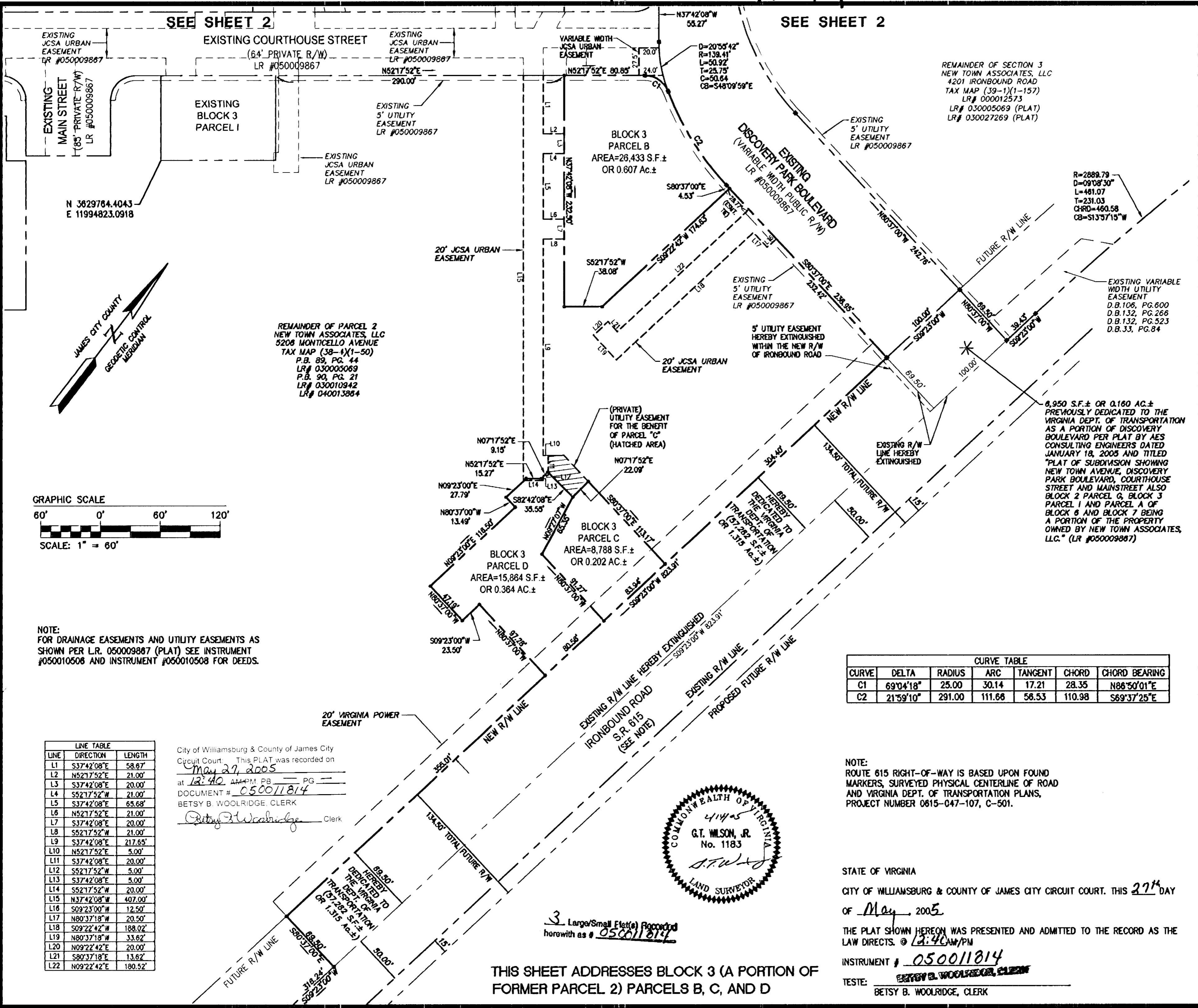


#050011814

SEE SHEET 2

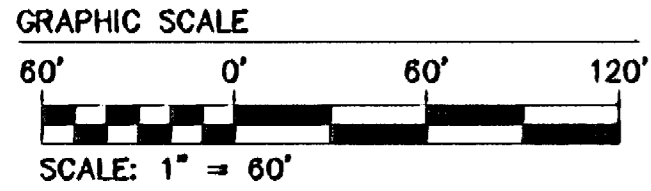
SEE SHEET 2



REMAINDER OF SECTION 3  
NEW TOWN ASSOCIATES, LLC  
4201 IRONBOUND ROAD  
TAX MAP (39-1)(1-157)  
LR# 000012573  
LR# 030005069 (PLAT)  
LR# 030027269 (PLAT)

REMAINDER OF PARCEL 2  
NEW TOWN ASSOCIATES, LLC  
5208 MONTCELLO AVENUE  
TAX MAP (38-1)(1-50)  
P.B. 89, PG. 44  
LR# 030005069  
P.B. 90, PG. 21  
LR# 030010942  
LR# 040013864

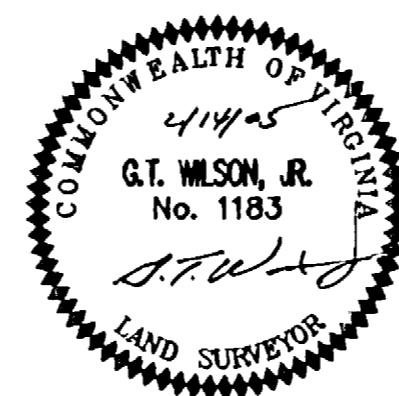
6,950 S.F.± OR 0.160 AC.±  
PREVIOUSLY DEDICATED TO THE  
VIRGINIA DEPT. OF TRANSPORTATION  
AS A PORTION OF DISCOVERY  
BOULEVARD PER PLAT BY AES  
CONSULTING ENGINEERS DATED  
JANUARY 18, 2005 AND TITLED  
"PLAT OF SUBDIVISION SHOWING  
NEW TOWN AVENUE, DISCOVERY  
PARK BOULEVARD, COURTHOUSE  
STREET AND MAINSTREET ALSO  
BLOCK 2 PARCEL G, BLOCK 3  
PARCEL I AND PARCEL A OF  
BLOCK 6 AND BLOCK 7 BEING  
A PORTION OF THE PROPERTY  
OWNED BY NEW TOWN ASSOCIATES,  
LLC." (LR #050009867)



NOTE:  
FOR DRAINAGE EASEMENTS AND UTILITY EASEMENTS AS  
SHOWN PER L.R. 050009867 (PLAT) SEE INSTRUMENT  
#050010508 AND INSTRUMENT #050010508 FOR DEEDS.

LINE	DIRECTION	LENGTH
L1	S37°42'08"E	58.67'
L2	N52°17'52"E	21.00'
L3	S37°42'08"E	20.00'
L4	S52°17'52"W	21.00'
L5	S37°42'08"E	65.68'
L6	N52°17'52"E	21.00'
L7	S37°42'08"E	20.00'
L8	S52°17'52"W	21.00'
L9	S37°42'08"E	217.65'
L10	N52°17'52"E	5.00'
L11	S37°42'08"E	20.00'
L12	S52°17'52"W	5.00'
L13	S37°42'08"E	5.00'
L14	S52°17'52"W	20.00'
L15	N37°42'08"W	407.00'
L16	S09°23'00"W	12.50'
L17	N80°37'18"W	20.50'
L18	S09°22'42"W	188.02'
L19	N80°37'18"W	33.62'
L20	N09°22'42"E	20.00'
L21	S80°37'18"E	13.62'
L22	N09°22'42"E	180.52'

City of Williamsburg & County of James City  
Circuit Court. This PLAT was recorded on  
May 27, 2005  
at 12:40 AM/PM PB PG  
DOCUMENT # 050011814  
BETSY B. WOOLRIDGE, CLERK  
Betsy B. Woolridge Clerk



CURVE TABLE						
CURVE	DELTA	RADIUS	ARC	TANGENT	CHORD	CHORD BEARING
C1	69°04'18"	25.00	30.14	17.21	28.35	N86°50'01"E
C2	21°59'10"	291.00	111.66	56.53	110.98	S69°37'25"E

NOTE:  
ROUTE 615 RIGHT-OF-WAY IS BASED UPON FOUND  
MARKERS, SURVEYED PHYSICAL CENTERLINE OF ROAD  
AND VIRGINIA DEPT. OF TRANSPORTATION PLANS,  
PROJECT NUMBER 0615-047-107, C-501.

STATE OF VIRGINIA  
CITY OF WILLIAMSBURG & COUNTY OF JAMES CITY CIRCUIT COURT. THIS 27<sup>th</sup> DAY  
OF May, 2005

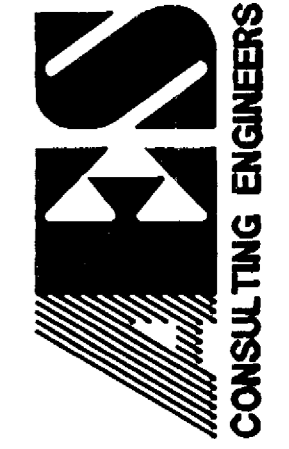
THE PLAT SHOWN HEREON WAS PRESENTED AND ADMITTED TO THE RECORD AS THE  
LAW DIRECTS. @ 12:40 AM/PM  
INSTRUMENT # 050011814  
TESTE: Betsy B. Woolridge, Clerk  
BETSY B. WOOLRIDGE, CLERK

THIS SHEET ADDRESSES BLOCK 3 (A PORTION OF  
FORMER PARCEL 2) PARCELS B, C, AND D

3 Large/Small Plat(s) Recorded  
herewith as # 050011814

No.	DATE	REVISION / COMMENT / NOTE	BY
3	5/20/05	ADDED EASEMENT NOTE	JFS
2	5/5/05	REVISED PER JCSA COMMENTS	JFS
1	4/4/05	REVISED PER COUNTY COMMENTS	JFS

5248 Old Towne Road, Suite 1  
Williamsburg, Virginia 23188  
(757) 253-0040  
Fax (757) 220-8994



PLAT OF SUBDIVISION  
SHOWING BLOCK 6 AND 7, PARCELS A, C, D AND E  
AND BLOCK 3, PARCELS B, C, AND D  
BEING A PORTION OF THE PROPERTY  
OWNED BY NEW TOWN ASSOCIATES, LLC  
BERKELEY DISTRICT COUNTY OF JAMES CITY VIRGINIA

Designed AES	Drawn JFS
Scale 1"=60'	Date 2/14/05
Project No. 6632-E-21-1	
Drawing No. 3 OF 3	