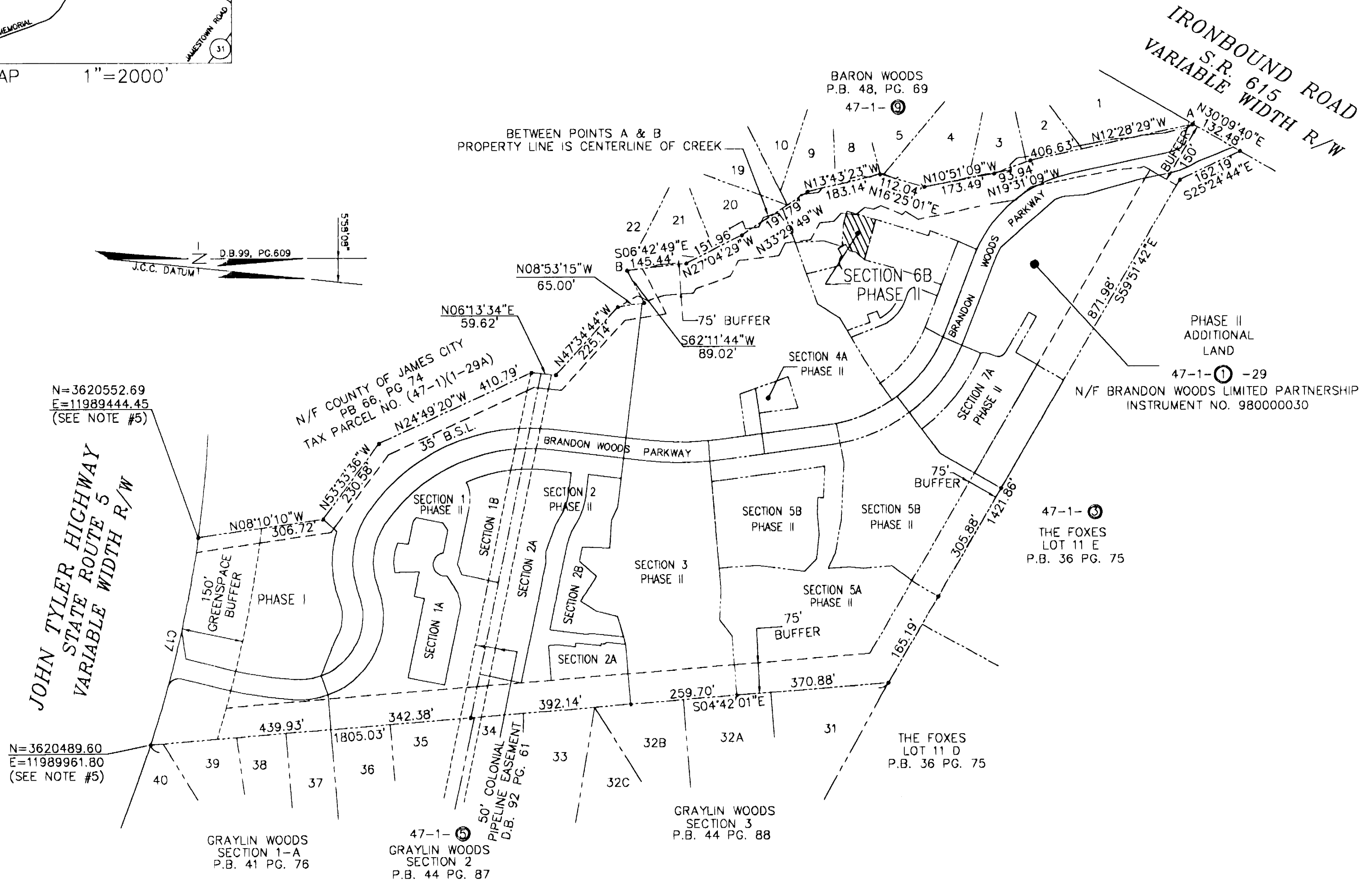
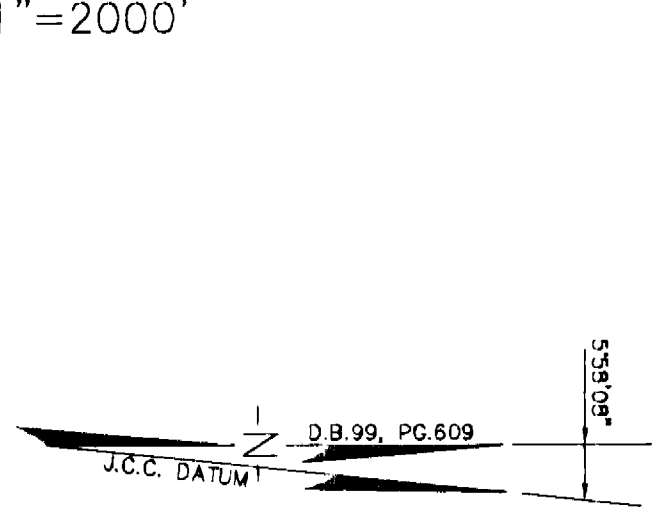
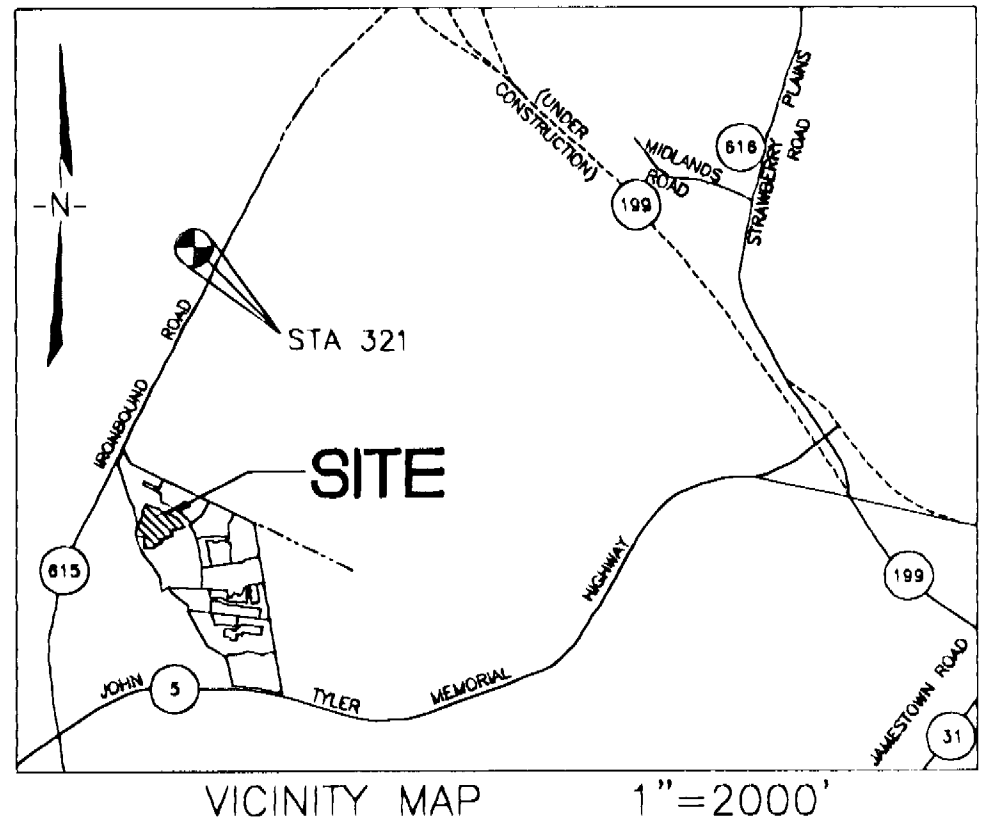


#05001199



N=3620552.69
E=11989444.45
(SEE NOTE #5)

N=3620489.60
E=11989961.80
(SEE NOTE #5)

City of Williamsburg & County of James City
Circuit Court: This PLAT was recorded on
20 May 2005
at 11:03 AM P.M. PG.
DOCUMENT # 05001199
BETSY B. WOOLRIDGE, CLERK
Betsy B. Woolridge Clerk

CONDOMINIUM PLAT
OF
SECTION 6B
(A PORTION OF PHASE II)
BRANDON WOODS
JAMES CITY COUNTY, VIRGINIA
SCALE: 1"=200' DATE: 5/13/05
SHEET 1 OF 4

**LANDMARK
DESIGN GROUP**
Engineers • Planners • Surveyors
Landscape Architects • Environmental Consultants
4029 IRONBOUND ROAD SUITE 100
WILLIAMSBURG, VA 23188
TEL (757) 253-2975 FAX(757) 229-0049



4 Large/Small Plat(s) Recorded
herewith as # 05001199

STATE OF VIRGINIA, COUNTY OF JAMES CITY
IN THE CLERK'S OFFICE OF THE CIRCUIT COURT THE PLAT
SHOWN HEREON WAS PRESENTED AND ADMITTED TO RECORD
20 May 2005 AS THE LAW DIRECTS.
TESTEE: *Betsy B. Woolridge* CLERK *By Claudia B. Bledsoe, Sp. Clerk*
DOCUMENT NO. 05001199

DRAWN BY: PF
CHKD. BY: AST
PROJ. NO.: 1980074-000.62
DWG. NO.: 16074W