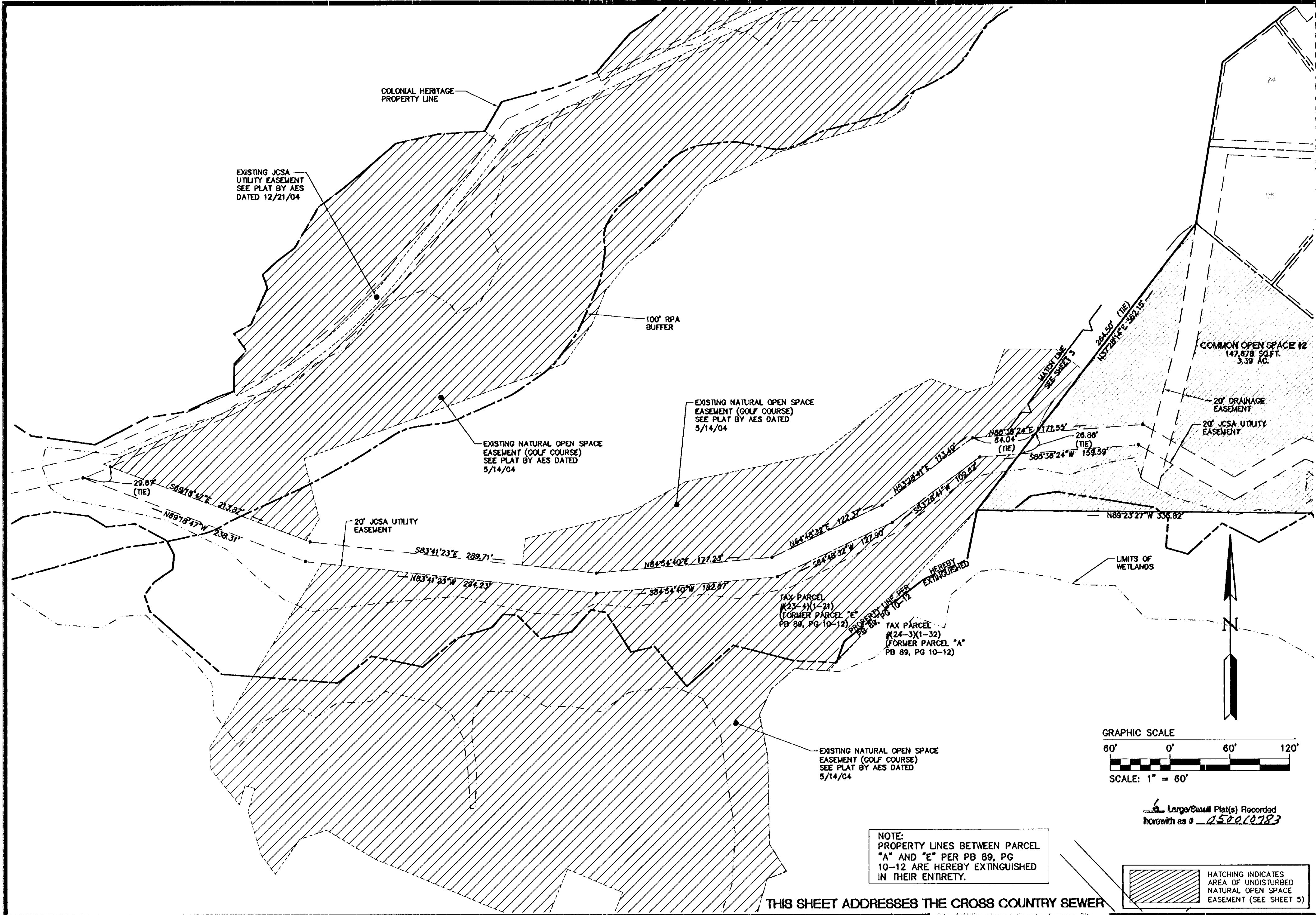
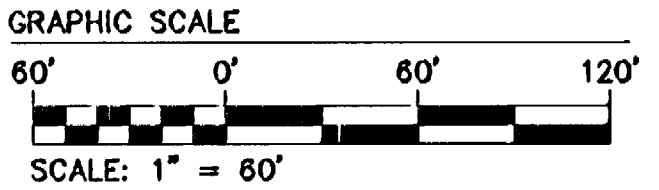


#050010783



RMS 03.01.05-09:01 888117P04.dwg

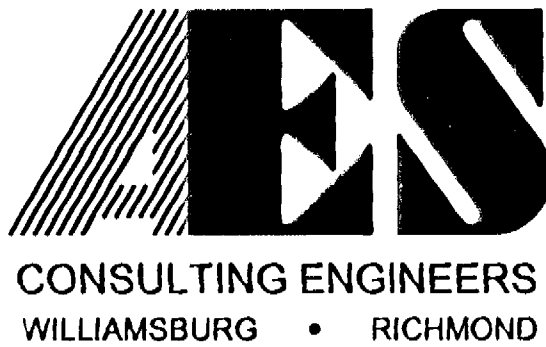


6 Large/Small Plat(s) Recorded herewith as # 050010783

NOTE: PROPERTY LINES BETWEEN PARCEL "A" AND "E" PER PB 89, PG 10-12 ARE HEREBY EXTINGUISHED IN THEIR ENTIRETY.

HATCHING INDICATES AREA OF UNDISTURBED NATURAL OPEN SPACE EASEMENT (SEE SHEET 5)

THIS SHEET ADDRESSES THE CROSS COUNTRY SEWER



5248 Olde Towne Road, Suite 1  
Williamsburg, Virginia 23188  
(757) 253-0040  
Fax (757) 220-8994

**PLAT OF SUBDIVISION  
AND PROPERTY LINE EXTINGUISHMENT  
COLONIAL HERITAGE**  
PHASE ONE, SECTION FOUR LOTS 1-53  
PREPARED FOR COLONIAL HERITAGE LLC  
STONEHOUSE DISTRICT JAMES CITY COUNTY VIRGINIA



City of Williamsburg & County of James City Circuit Court. This PLAT was recorded on 17 May 2005 at 3:27 AM PM PB PG		
DOCUMENT # 050010783		
BETSY B. WOOLRIDGE, CLERK		
Betsy B. Woolridge Clerk		
1	2/28/05	REVISIONS PER COUNTY COMMENTS GTW
No.	DATE	REVISION / COMMENT / NOTE BY

Designed AES	Drawn HEB
Scale 1" = 60'	Date 10/15/04
Project No. 8881-17	
Drawing No. 4 OF 6	