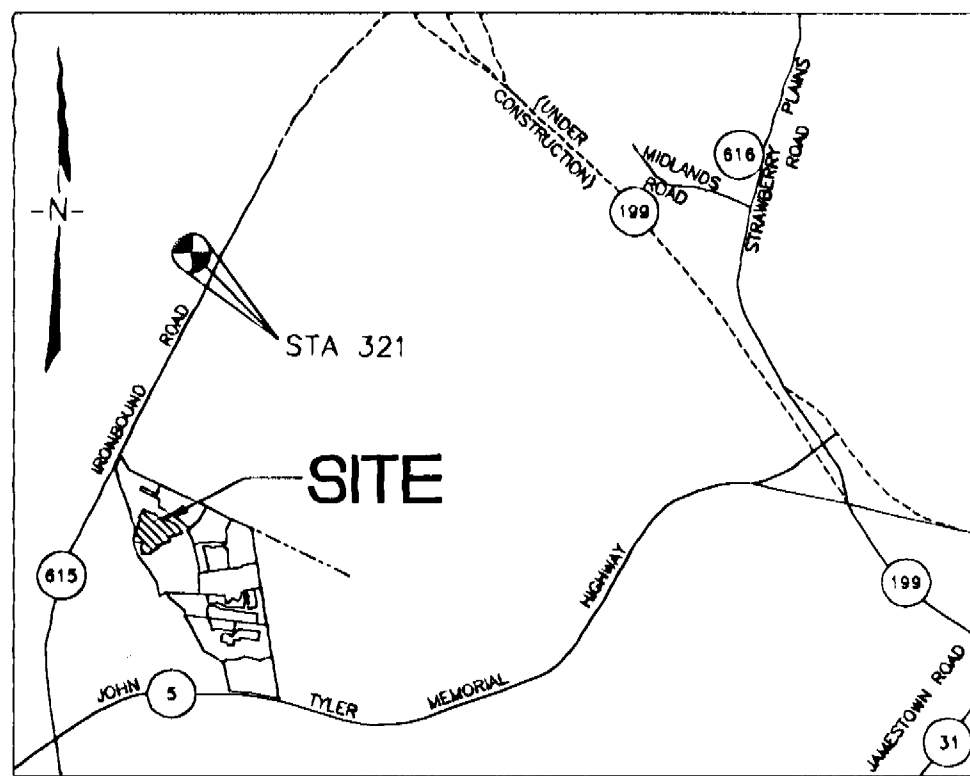
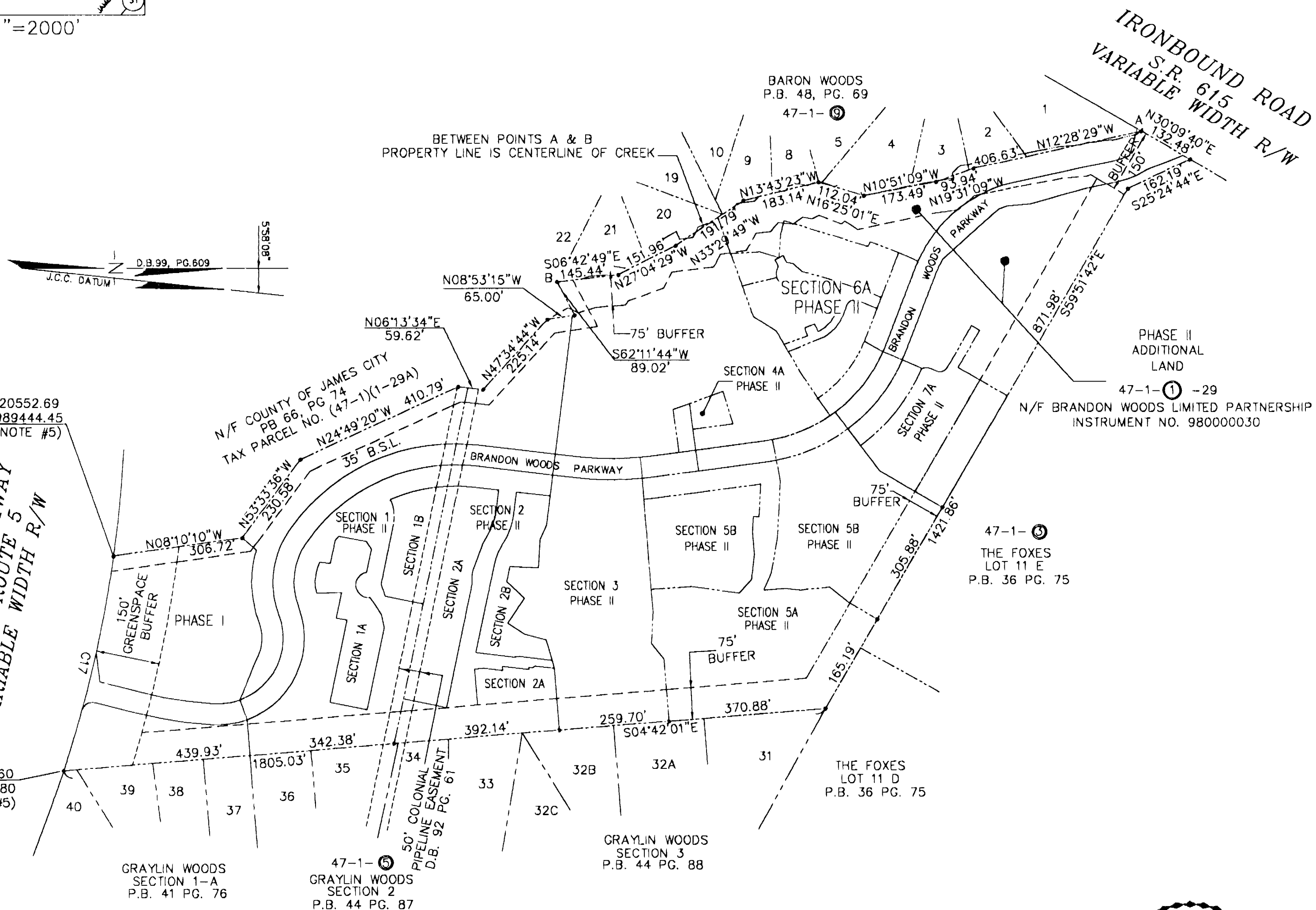


#050010579



VICINITY MAP 1"=2000'



N=3620552.69  
E=11989444.45  
(SEE NOTE #5)

N=3620489.60  
E=11989961.80  
(SEE NOTE #5)

4 Large/Small Plat(s) Recorded  
herewith as # 050010579

CONDOMINIUM PLAT  
OF  
SECTION 6A  
(A PORTION OF PHASE II)  
BRANDON WOODS  
JAMES CITY COUNTY, VIRGINIA  
SCALE: 1"=200' DATE: 5/11/05

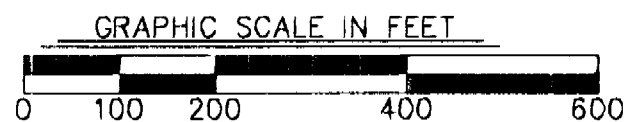
SHEET 1 OF 4

**LANDMARK  
DESIGN GROUP**

Engineers • Planners • Surveyors  
Landscape Architects • Environmental Consultants  
4029 IRONBOUND ROAD SUITE 100  
WILLIAMSBURG, VA 23188  
TEL (757) 253-2975 FAX(757) 229-0049



City of Williamsburg & County of James City  
Circuit Court. This PLAT was recorded on  
16 May 2005  
at 1:22 AM PM. PB \_\_\_\_\_ PG \_\_\_\_\_  
DOCUMENT # 050010579  
BETSY B. WOOLRIDGE, CLERK  
Betsy B. Woolridge Clerk



STATE OF VIRGINIA, COUNTY OF JAMES CITY  
IN THE CLERK'S OFFICE OF THE CIRCUIT COURT THE PLAT  
SHOWN HEREON WAS PRESENTED AND ADMITTED TO RECORD  
AS THE LAW DIRECTS.

TESTEE: \_\_\_\_\_, CLERK

DOCUMENT NO. \_\_\_\_\_

DRAWN BY: PF  
CHKD. BY: AST

PROJ. NO.: 1980074-000.62  
DWG. NO.: 15991W