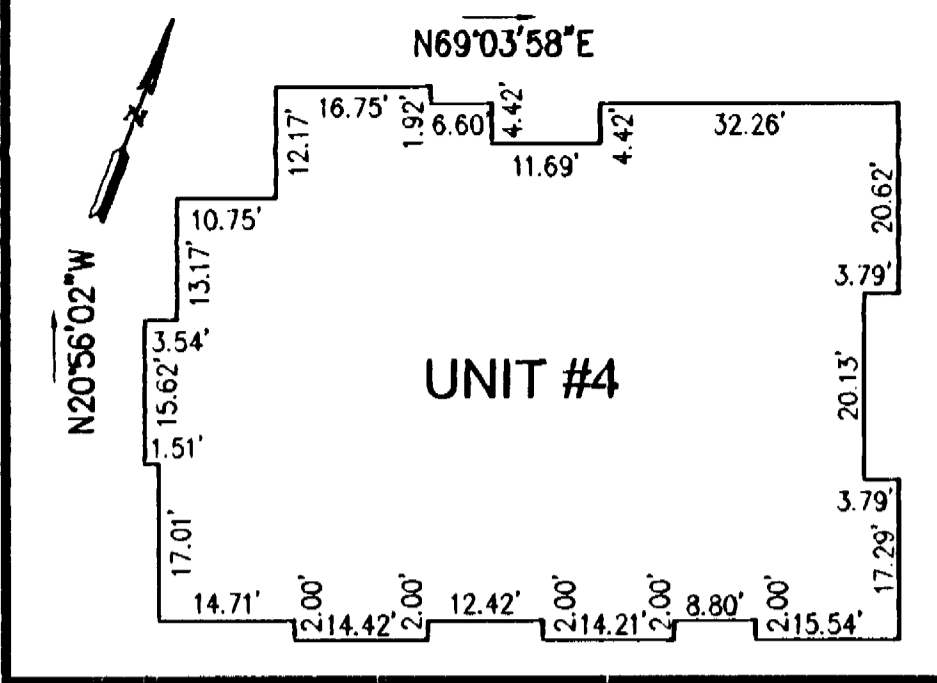
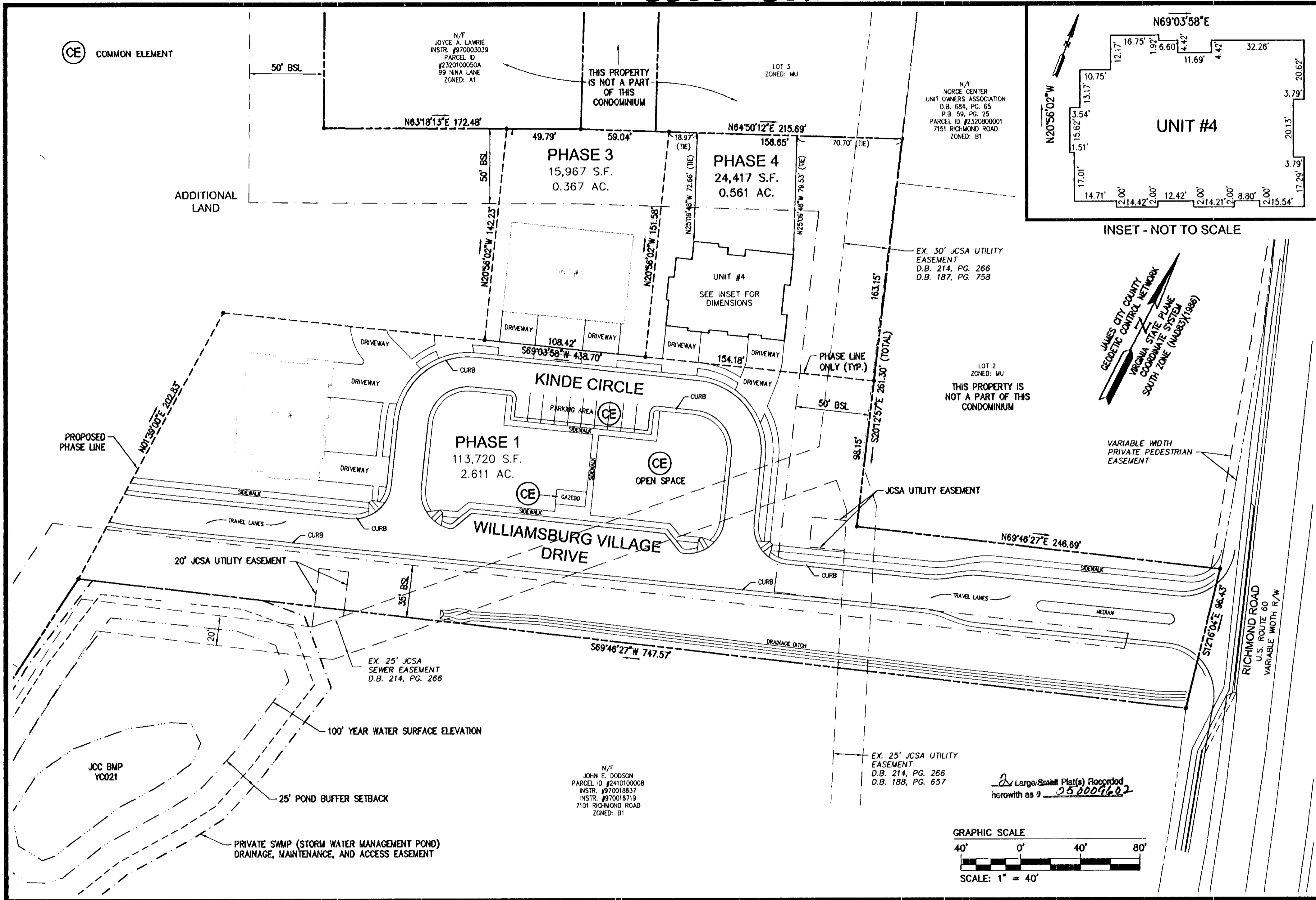


#050009602



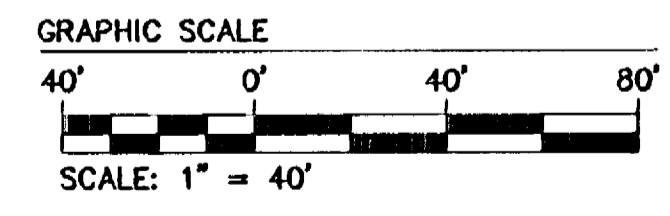
JAMES CITY COUNTY  
 GEODETIC CONTROL NETWORK  
 VIRGINIA STATE PLANE  
 COORDINATE SYSTEM  
 SOUTH ZONE (NAD83)(1986)

LOT 2  
 ZONED: MU  
 THIS PROPERTY IS  
 NOT A PART OF THIS  
 CONDOMINIUM

N/F  
 JOHN E. DODSON  
 PARCEL ID #2410100008  
 INSTR. #970018637  
 INSTR. #970018719  
 7101 RICHMOND ROAD  
 ZONED: B1

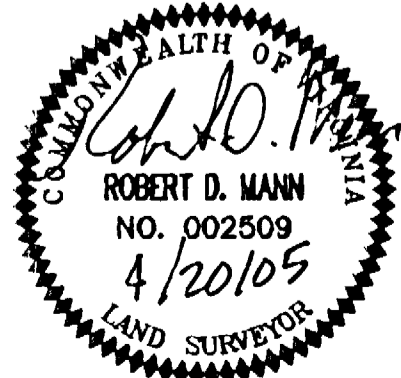
EX. 25' JCSA UTILITY  
 EASEMENT  
 D.B. 214, PG. 266  
 D.B. 188, PG. 657

Large/Small Plat(s) Recorded  
 herewith as # 050009602



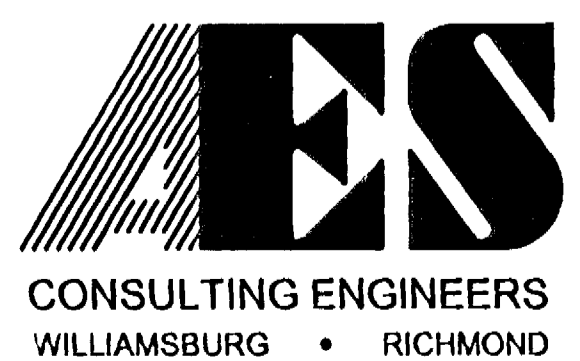
"EXHIBIT 1"

PLAT OF CONDOMINIUM  
**WILLIAMSBURG VILLAGE AT NORGE CONDOMINIUM**  
 PHASE 4, UNIT #4  
 STONEHOUSE DISTRICT COUNTY OF JAMES CITY VIRGINIA



No.	DATE	REVISION / COMMENT / NOTE	BY

Designed VMB/JAG	Drawn AWT
Scale 1"=40'	Date 4/19/05
Project No. 9286-2	
Drawing No. 2 of 2	



5248 Olde Towne Road, Suite 1  
 Williamsburg, Virginia 23188  
 (757) 253-0040  
 Fax (757) 220-8994