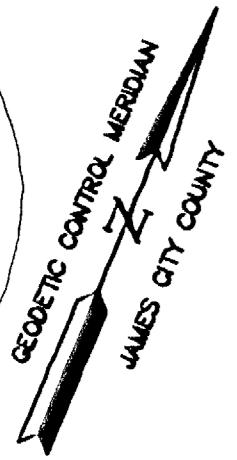
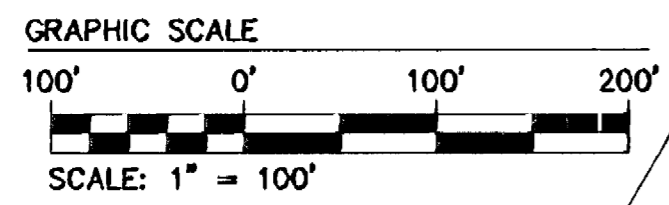
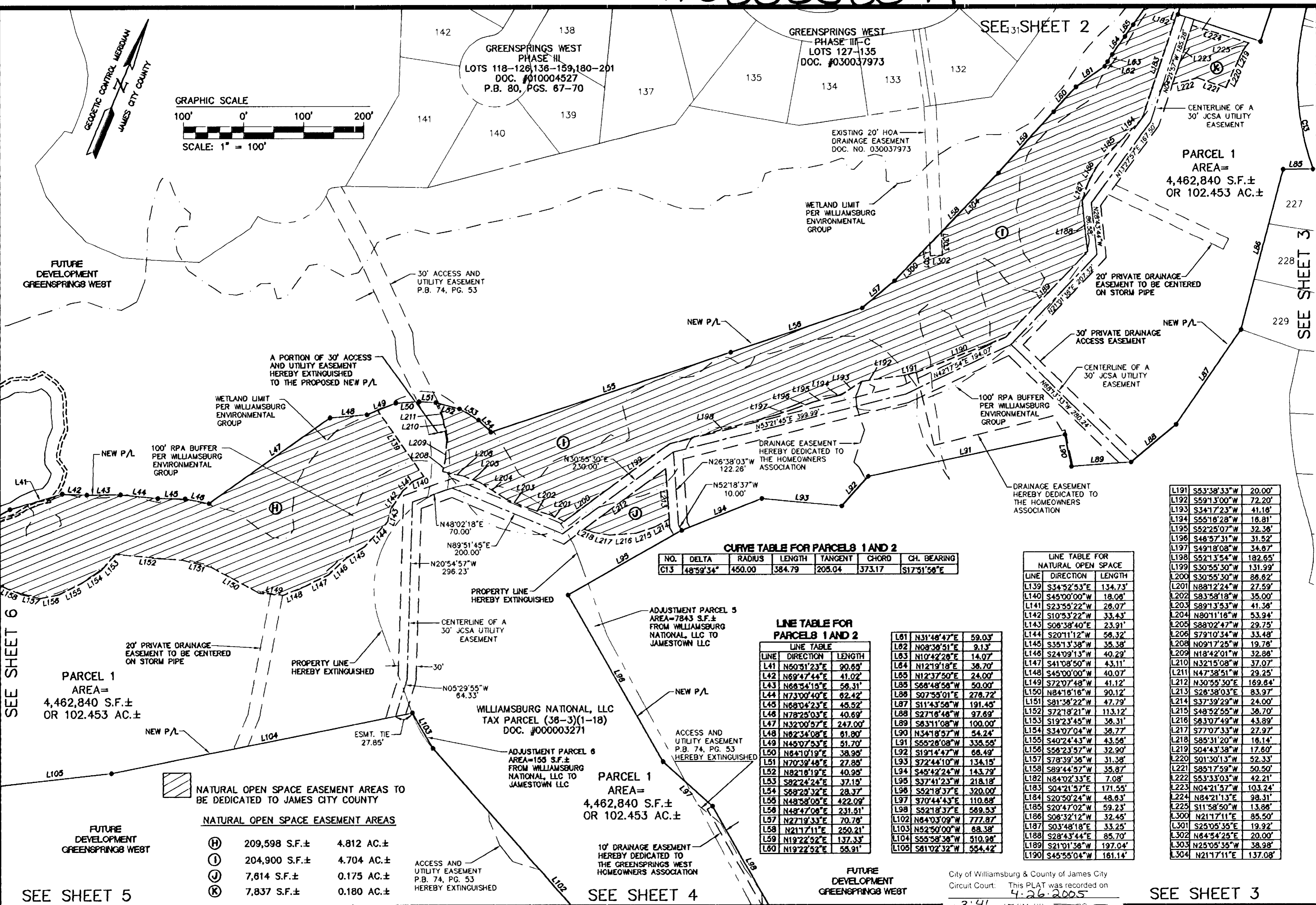


#050008879



CURVE TABLE FOR PARCELS 1 AND 2

NO.	DELTA	RADIUS	LENGTH	TANGENT	CHORD	CH. BEARING
C13	48°59'34"	450.00	384.79	205.04	373.17	S17°31'58"E

LINE TABLE FOR PARCELS 1 AND 2

LINE	DIRECTION	LENGTH
L41	N50°51'23"E	90.65'
L42	N69°47'44"E	41.02'
L43	N68°54'18"E	58.31'
L44	N73°00'40"E	62.42'
L45	N68°04'23"E	45.52'
L46	N78°25'03"E	40.69'
L47	N32°00'57"E	247.00'
L48	N82°34'08"E	61.80'
L49	N45°07'53"E	51.70'
L50	N84°10'19"E	38.95'
L51	N70°39'48"E	27.85'
L52	N82°16'19"E	40.95'
L53	S82°24'24"E	37.15'
L54	S89°25'32"E	28.37'
L55	N48°58'08"E	422.09'
L56	N48°47'08"E	231.51'
L57	N27°19'33"E	70.78'
L58	N21°17'11"E	250.21'
L59	N19°22'52"E	137.33'
L60	N19°22'52"E	55.91'

LINE TABLE FOR NATURAL OPEN SPACE

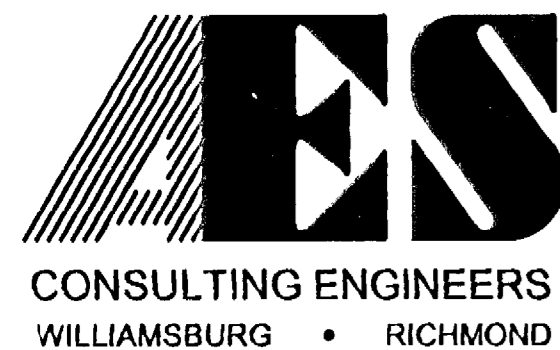
LINE	DIRECTION	LENGTH
L139	S34°52'53"E	134.73'
L140	S45°00'00"W	18.06'
L141	S23°55'22"W	28.07'
L142	S10°53'22"W	33.43'
L143	S06°38'40"E	23.91'
L144	S20°11'12"W	58.32'
L145	S35°13'38"W	35.38'
L146	S24°09'13"W	40.29'
L147	S41°08'50"W	43.11'
L148	S45°00'00"W	40.07'
L149	S72°07'48"W	41.12'
L150	N84°18'18"W	90.12'
L151	S81°38'22"W	47.79'
L152	S72°18'21"W	113.12'
L153	S19°23'45"W	38.31'
L154	S34°07'04"W	38.77'
L155	S40°24'43"W	43.56'
L156	S58°23'57"W	32.90'
L157	S78°39'36"W	31.38'
L158	S89°44'57"W	35.87'
L159	S20°50'24"W	48.63'
L160	S20°47'02"W	59.23'
L161	S08°32'12"W	32.45'
L162	S03°48'18"E	33.25'
L163	S28°43'44"E	85.70'
L164	S21°01'38"W	197.04'
L165	S45°55'04"W	181.14'

L191	S53°38'33"W	20.00'
L192	S59°13'00"W	72.20'
L193	S34°17'23"W	41.18'
L194	S55°18'28"W	18.81'
L195	S52°25'07"W	32.36'
L196	S48°57'31"W	31.52'
L197	S49°18'08"W	34.67'
L198	S52°13'54"W	182.65'
L199	S30°55'30"W	131.99'
L200	S30°55'30"W	86.62'
L201	N88°12'24"W	27.59'
L202	S83°58'18"W	35.00'
L203	S89°13'53"W	41.38'
L204	N80°11'16"W	53.94'
L205	S88°02'47"W	29.75'
L206	S79°10'34"W	33.48'
L207	N09°17'25"W	19.78'
L208	N18°42'01"W	32.86'
L209	N32°15'08"W	37.07'
L210	N47°38'51"W	29.25'
L211	N30°55'30"E	169.84'
L212	S26°38'03"E	83.97'
L213	S37°39'29"W	24.00'
L214	S48°52'55"W	36.70'
L215	S63°07'49"W	43.89'
L216	S77°07'33"W	27.97'
L217	S85°31'20"W	16.14'
L218	S04°43'38"W	17.60'
L219	S01°30'13"W	52.33'
L220	S85°17'59"W	50.50'
L221	S53°33'03"W	42.21'
L222	N04°21'57"E	103.24'
L223	N84°21'13"E	98.31'
L224	N21°17'11"E	85.50'
L225	S25°05'35"E	19.92'
L226	N64°34'25"E	20.00'
L227	N25°05'35"W	38.98'
L228	N21°17'11"E	137.08'

SEE SHEET 5

SEE SHEET 4

SEE SHEET 3



2548 Olde Towne Road, Suite 1
Williamsburg, Virginia 23188
(757) 253-0040
Fax (757) 220-8994

PLAT OF BOUNDARY LINE ADJUSTMENT AND NATURAL OPEN SPACE EASEMENTS PREPARED FOR WILLIAMSBURG NATIONAL, L.L.C.

BERKELEY DISTRICT JAMES CITY COUNTY VIRGINIA



City of Williamsburg & County of James City
Circuit Court: This PLAT was recorded on 4-26-2005 at 3:46 PM, PG. DOCUMENT # 050008879
BETSY B. WOOLRIDGE, CLERK
Betsy B. Woolridge, Clerk

No.	DATE	REVISION / COMMENT / NOTE	BY
4	4/11/05	REVISED UTILITY EASEMENT PER JCSA COMMENTS	JFS
3	2/14/05	REVISED VDOT R/W DEDICATION AND UTILITY EASEMENTS	JFS
2	2/7/05	REVISED OWNER'S CONSENT AND DEDICATION BLOCK	JFS
1	11/30/04	REVISED PER COUNTY COMMENTS	JFS

Designed	Drawn
AES	JFS
Scale	Date
1"=100'	10/7/04
Project No.	
8658-16	
Drawing No.	
7 OF 11	