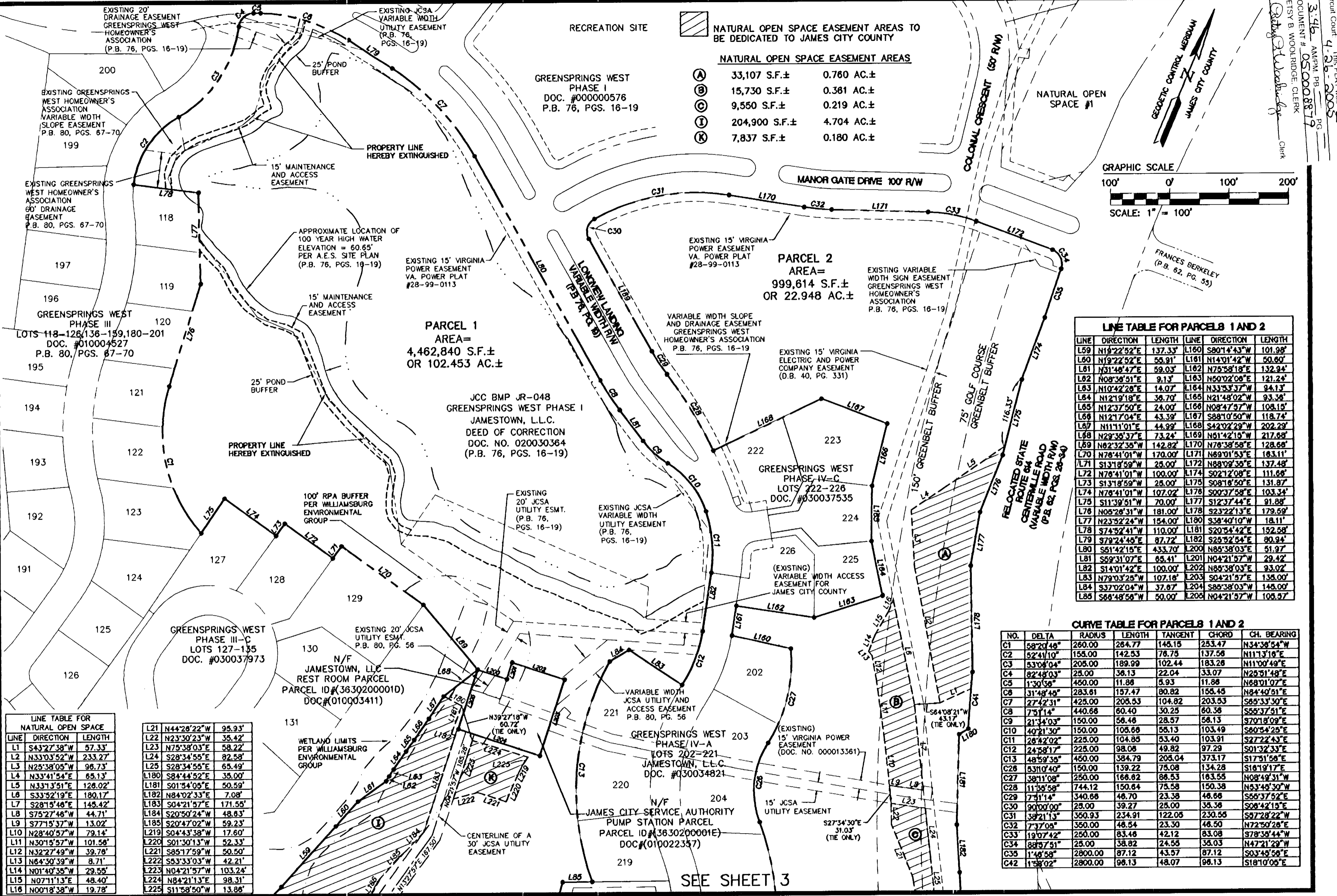


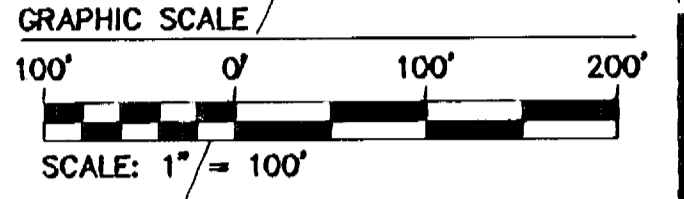
#050008879

City of Williamsburg & County of James City
 This Plat was recorded on
 Circuit Court 4-26-2005
 DOCUMENT # 050008879
 Betsy B. Woolridge, Clerk
 City of Williamsburg, Virginia
 Clerk



NATURAL OPEN SPACE EASEMENT AREAS TO BE DEDICATED TO JAMES CITY COUNTY

Symbol	S.F.±	AC.±
(A)	33,107 S.F.±	0.760 AC.±
(B)	15,730 S.F.±	0.361 AC.±
(C)	9,550 S.F.±	0.219 AC.±
(I)	204,900 S.F.±	4.704 AC.±
(K)	7,837 S.F.±	0.180 AC.±



LINE TABLE FOR PARCELS 1 AND 2

LINE	DIRECTION	LENGTH	LINE	DIRECTION	LENGTH
L59	N19°22'52"E	137.33	L160	S80°14'43"W	101.98'
L60	N19°22'52"E	56.91'	L161	N14°01'42"W	50.60'
L61	N31°48'47"E	59.03'	L162	N75°58'18"E	132.94'
L62	N08°38'51"E	9.13'	L163	N50°02'08"E	121.24'
L63	N10°42'28"E	14.07'	L164	N33°33'37"W	94.13'
L64	N12°19'18"E	36.70'	L165	N21°48'02"W	93.38'
L65	N12°37'50"E	24.00'	L166	N08°47'57"W	108.15'
L66	N12°17'04"E	43.39'	L167	S88°10'50"W	118.74'
L67	N11°11'01"E	44.99'	L168	S42°02'29"W	202.29'
L68	N29°38'37"E	73.24'	L169	N51°42'15"W	217.68'
L69	N02°32'35"W	142.82'	L170	N78°38'58"E	128.66'
L70	N78°41'01"W	179.00'	L171	N89°01'53"E	183.11'
L71	S13°18'59"W	25.00'	L172	N88°09'38"E	137.48'
L72	N78°41'01"W	100.00'	L173	S02°12'08"E	111.66'
L73	S13°18'59"W	25.00'	L174	S08°16'50"E	131.87'
L74	N78°41'01"W	107.02'	L175	S00°37'58"E	103.34'
L75	S11°39'51"W	70.00'	L176	S12°37'44"E	91.88'
L76	N05°28'31"W	181.00'	L177	S23°22'13"E	179.59'
L77	N23°52'24"W	154.00'	L178	S28°40'10"W	18.11'
L78	S74°52'41"W	110.00'	L181	S20°54'42"E	152.58'
L79	S79°24'45"E	87.72'	L182	S25°52'54"E	80.94'
L80	S61°42'15"E	433.70'	L200	N85°38'03"E	51.97'
L81	S59°31'07"E	65.41'	L201	N04°21'57"W	29.42'
L82	S14°01'42"E	100.00'	L202	N85°38'03"E	93.02'
L83	N79°03'25"W	107.18'	L203	S04°21'57"E	135.00'
L84	S37°02'04"W	37.87'	L204	S85°38'03"W	145.00'
L85	S68°48'58"W	50.00'	L205	N04°21'57"W	109.97'

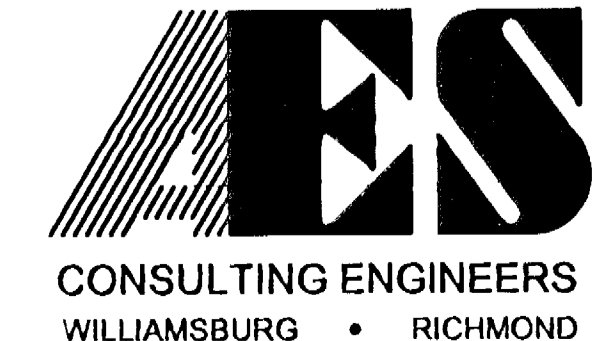
CURVE TABLE FOR PARCELS 1 AND 2

NO.	DELTA	RADIUS	LENGTH	TANGENT	CHORD	CH. BEARING
C1	58°20'46"	260.00	284.77	148.15	253.47	N34°38'54"W
C2	52°41'10"	155.00	142.53	76.75	137.58	N11°13'18"E
C3	53°06'04"	205.00	189.99	102.44	183.26	N11°00'49"E
C4	82°48'03"	25.00	36.13	22.04	33.07	N25°31'48"E
C5	1°30'58"	450.00	11.88	5.93	11.88	N68°01'07"E
C6	31°48'45"	283.61	157.47	80.82	155.45	N84°40'51"E
C7	27°42'31"	425.00	205.53	104.82	203.53	S85°33'30"E
C8	75°11'14"	440.66	60.40	30.25	60.36	S55°37'51"E
C9	21°34'03"	150.00	56.48	28.57	56.13	S70°18'09"E
C10	40°21'30"	150.00	105.66	55.13	103.49	S60°54'25"E
C11	28°42'02"	225.00	104.85	53.40	103.91	S27°22'43"E
C12	24°58'17"	225.00	98.06	49.82	97.29	S01°32'33"E
C13	48°59'35"	450.00	384.79	205.04	373.17	S17°51'56"E
C14	83°10'40"	150.00	139.22	75.08	134.28	S18°19'17"E
C15	38°11'08"	250.00	166.82	86.53	163.55	N08°49'31"W
C16	11°55'58"	744.12	150.64	75.58	150.38	N53°45'30"W
C17	7°31'14"	340.66	46.70	23.38	46.66	S55°37'52"E
C18	90°00'00"	25.00	39.27	25.00	35.36	S08°42'15"E
C19	58°21'13"	350.93	234.91	122.05	230.55	S87°28'22"W
C20	7°37'03"	350.00	46.54	23.30	46.50	N72°50'26"E
C21	19°07'42"	250.00	83.46	42.12	83.08	S78°35'44"W
C22	88°57'51"	25.00	38.82	24.55	38.03	N47°21'29"W
C23	1°48'58"	2800.00	87.12	43.57	87.12	S03°45'56"E
C24	1°58'02"	2800.00	98.13	48.07	98.13	S18°10'05"E

LINE TABLE FOR NATURAL OPEN SPACE

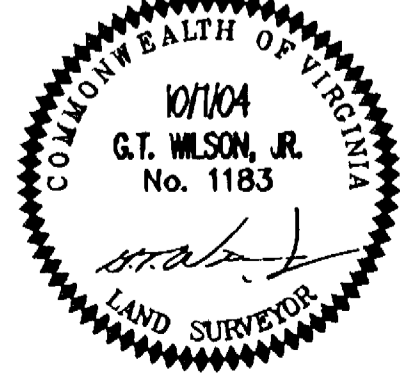
LINE	DIRECTION	LENGTH
L1	S43°27'38"W	57.33'
L2	N33°03'52"W	233.27'
L3	N25°38'05"W	96.73'
L4	N33°41'54"E	65.13'
L5	N33°13'51"E	126.02'
L6	S33°52'19"E	180.17'
L7	S28°15'46"E	145.42'
L8	S75°27'46"W	44.71'
L9	S77°15'37"W	13.02'
L10	N28°40'57"W	79.14'
L11	N30°15'57"W	101.56'
L12	N32°27'49"W	39.76'
L13	N64°30'39"W	8.71'
L14	N01°40'55"W	29.55'
L15	N07°11'13"E	48.40'
L16	N00°18'38"W	19.78'

L21	N44°28'22"W	95.93'
L22	N23°30'23"W	35.42'
L23	N75°38'03"E	58.22'
L24	S28°34'55"E	82.58'
L25	S28°34'55"E	65.49'
L26	S84°44'52"E	35.00'
L27	S01°34'05"E	50.59'
L28	N84°02'33"E	7.08'
L29	S04°21'57"E	171.55'
L30	S20°50'24"W	48.83'
L31	S20°47'02"W	59.23'
L32	S04°43'38"W	17.60'
L33	S01°30'13"W	52.33'
L34	S85°17'59"W	50.50'
L35	S53°33'03"W	42.21'
L36	N04°21'57"W	103.24'
L37	N84°21'13"E	98.31'
L38	S11°58'50"W	13.86'



5248 Olde Towne Road, Suite 1
 Williamsburg, Virginia 23188
 (757) 253-0040
 Fax (757) 220-8994

PLAT OF BOUNDARY LINE ADJUSTMENT AND NATURAL OPEN SPACE EASEMENTS
 PREPARED FOR
WILLIAMSBURG NATIONAL, L.L.C.
 BERKELEY DISTRICT JAMES CITY COUNTY VIRGINIA



No.	DATE	REVISION / COMMENT / NOTE	BY
4	4/11/05	REVISED UTILITY EASEMENT PER JCSA COMMENTS	JFS
3	2/14/05	REVISED VDOT R/W DEDICATION AND UTILITY EASEMENTS	JFS
2	2/7/05	REVISED OWNER'S CONSENT AND DEDICATION BLOCK	JFS
1	11/30/04	REVISED PER COUNTY COMMENTS	JFS

Designed	Drawn
AES	JFS
Scale	Date
1"=100'	10/7/04
Project No.	
8856-16	
Drawing No.	
2 OF 11	