

#050008866

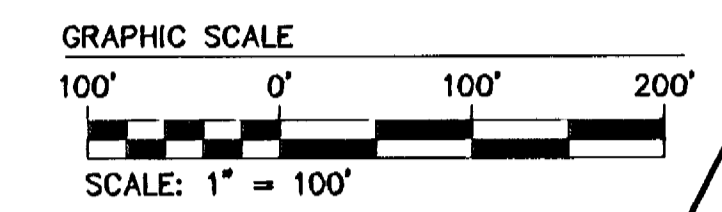
SEE SHEET 2 OF 3

SEE SHEET 2 FOR ALL CURVE TABLES

SUMMARY OF REALTEC, INC. AREAS

PARCEL A	ORIGINAL AREA	= 32.71 AC.±
AREA TO CHAMPIONSHIP 18 HOLE GOLF COURSE		= -0.29 AC.±
AREA TO PARCEL A-1		= -0.38 AC.±
AREA TO PARCEL A-2		= -0.01 AC.±
AREA FROM BLUE HERON COURSE FAIRWAY #9		= 0.10 AC.±
AREA FROM R/W		= 0.11 AC.±
AREA TO R/W		= -0.27 AC.±
AREA TO DOROTHEA M. FORD		= -0.20 AC.±
NEW TOTAL AREA FOR PARCEL A		= 31.76 AC.±
PARCEL A-1	ORIGINAL AREA	= 0.00 AC.±
AREA FROM CHAMPIONSHIP 18 HOLE GOLF COURSE		= 0.17 AC.±
AREA FROM DRIVING RANGE		= 0.12 AC.±
AREA FROM PARCEL 5		= 0.14 AC.±
AREA FROM GOLF CLUB AND PRO SHOP		= 0.56 AC.±
AREA FROM R/W		= 0.18 AC.±
AREA FROM PARCEL A		= 0.38 AC.±
NEW TOTAL AREA FOR PARCEL A-1		= 1.55 AC.±
PARCEL A-2	ORIGINAL AREA	= 0.00 AC.±
AREA FROM GOLF CLUB AND PRO SHOP		= 1.21 AC.±
AREA FROM R/W		= 0.94 AC.±
AREA FROM PARCEL A		= 0.01 AC.±
NEW TOTAL AREA FOR PARCEL A-2		= 2.16 AC.±
PARCEL A-3	ORIGINAL AREA	= 0.00 AC.±
AREA FROM PARCEL 3		= 0.95 AC.±
AREA FROM PARCEL 5		= 0.05 AC.±
NEW TOTAL AREA FOR PARCEL A-3		= 1.00 AC.±
RIGHT OF WAY	ORIGINAL AREA	= 4.22 AC.±
AREA FROM GOLF CLUB AND PRO SHOP		= 0.33 AC.±
AREA TO GOLF CLUB AND PRO SHOP		= -0.10 AC.±
AREA FROM PARCEL A		= 0.27 AC.±
AREA TO PARCEL A		= -0.11 AC.±
AREA TO PARCEL A-1		= -0.18 AC.±
AREA TO PARCEL A-2		= -0.94 AC.±
NEW TOTAL AREA FOR RIGHT OF WAY		= 3.49 AC.±
LOT 39, SECT. 5A	ORIGINAL AREA	= 4.76 AC.±
AREA FROM PARCEL A		= 0.20 AC.±
NEW TOTAL AREA FOR LOT 39, SECT. 5A		= 4.96 AC.±

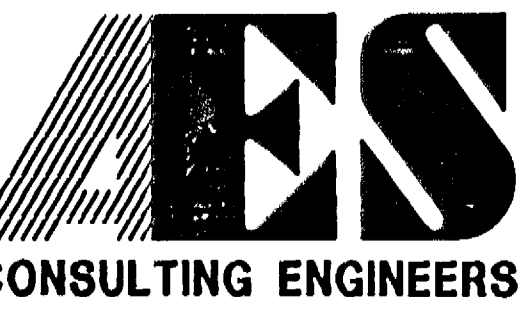
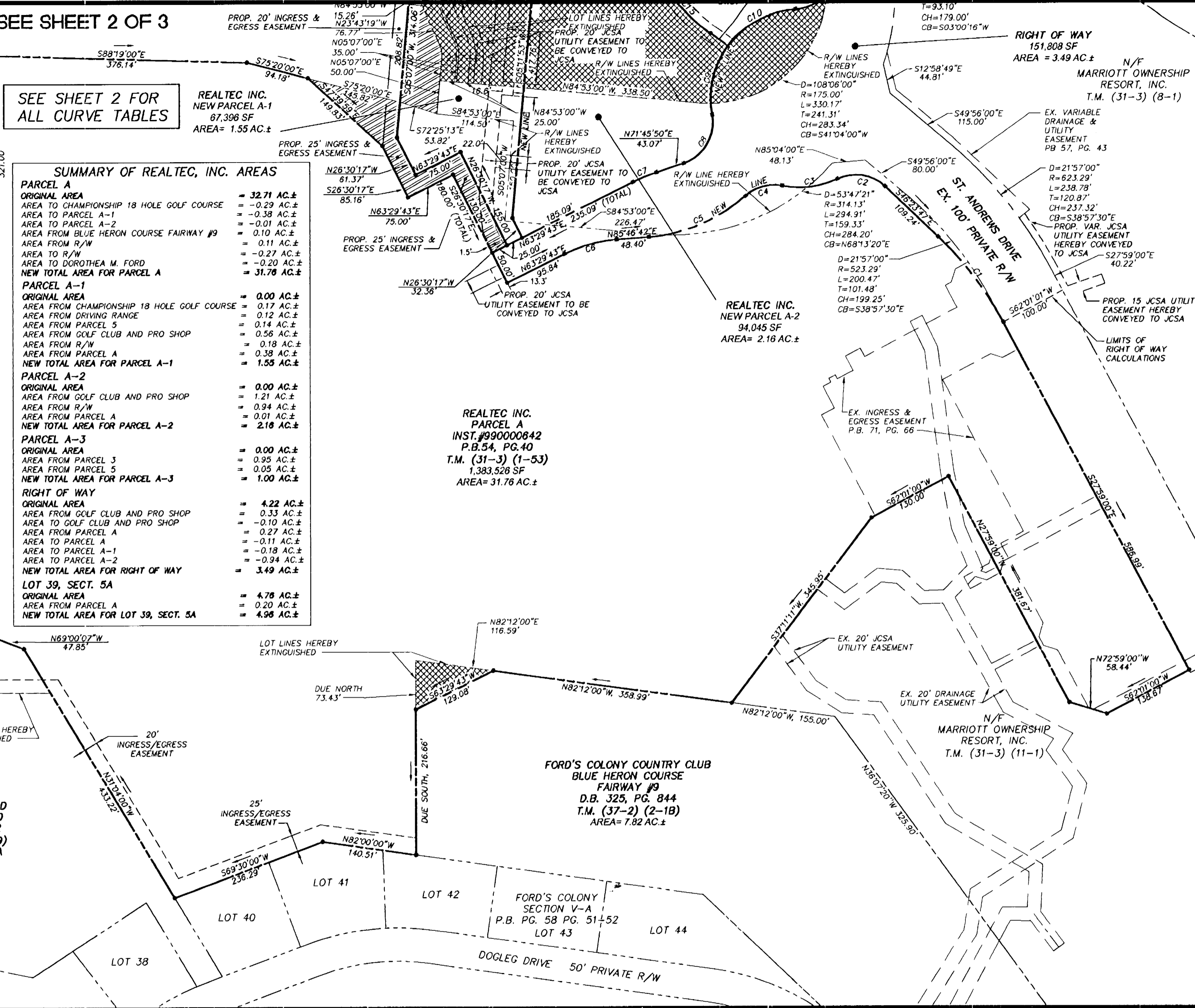
City of Williamsburg & County of James City
Circuit Court.
at 4:42 P.M. on 4/26/04
DOCUMENT # 050008866
BETSY B. WOOLDRIDGE, CLERK
Clerk
FORD'S COLONY MERIDIAN



FORD'S COLONY COUNTRY CLUB, INC.
CHAMPIONSHIP 18-HOLE GOLF COURSE
P.B.52, PG.53-54
P.B.64, PG.27
P.B.65, PG.78
D.B.822, PG.717
T.M. (30-4) (1-2)
AREA= 37.82 AC.±

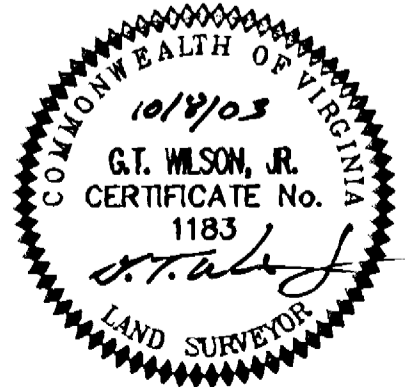
N/F DOROTHEA M. FORD
D.B. 681, PG. 230
P.B.58, PG.51-52
T.M. (31-3) (6-39)
LOT 39, SECT. 5A
AREA= 4.96 AC.±

LOT 38
LOT 40
LOT 41
LOT 42
LOT 43
LOT 44



5248 Olde Towne Road, Suite 1
Williamsburg, Virginia 23188
(757) 253-0040
Fax (757) 220-8994

PLAT OF SUBMISSION AND BOUNDARY LINE ADJUSTMENTS
BETWEEN PROPERTY OWNED BY
FORD'S COLONY COUNTRY CLUB; REALTEC, INC.
AND DOROTHEA M. FORD
FORD'S COLONY
© WILLIAMSBURG
POWHATAN DISTRICT JAMES CITY COUNTY VIRGINIA



No.	DATE	REVISION / COMMENT / NOTE	BY
3	7/13/04	REVISED WATERLINE EASEMENT	CBR
2	4/19/04	REVISION PER OWNERS REQUEST, ADDED PARCEL A-3	LBA
1	11/6/03	REVISION PER JCC COMMENTS DATED 11/4/03	LBA

Designed	Drawn
CBR	LBA
Scale	Date
1"=100'	10/8/03
Project No.	
5852-33	
Drawing No.	
3 OF 3	