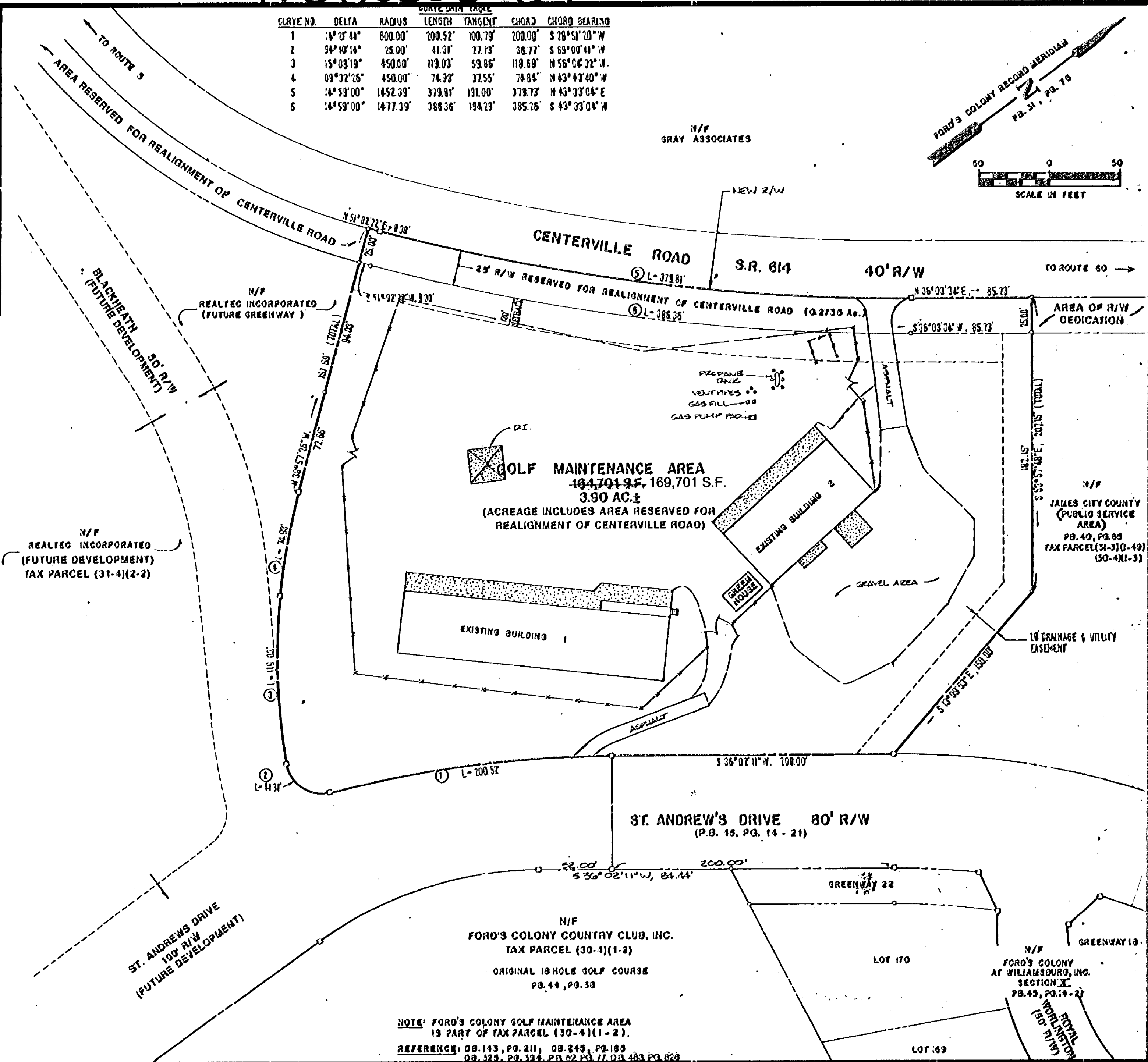
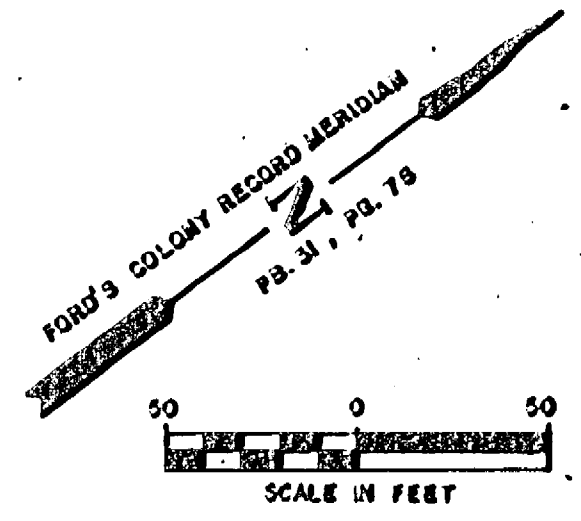


#050008584

| CURVE NO. | DELTA | RADIUS | LENGTH | TANGENT | CHORD | CHORD BEARING |
|-----------|-----------|----------|---------|---------|---------|---------------|
| 1 | 14°21'44" | 800.00' | 200.52' | 100.79' | 200.00' | S 28°51'20" W |
| 2 | 34°40'14" | 25.00' | 41.31' | 27.13' | 36.77' | S 63°00'41" W |
| 3 | 15°03'19" | 450.00' | 119.03' | 59.86' | 118.69' | N 56°04'32" W |
| 4 | 09°32'16" | 450.00' | 74.93' | 37.55' | 74.84' | N 43°43'40" W |
| 5 | 14°59'00" | 1452.39' | 379.91' | 191.00' | 378.73' | N 43°33'04" E |
| 6 | 14°59'00" | 1477.39' | 388.36' | 194.29' | 385.26' | S 43°33'04" W |



LOCATION MAP
SCALE 1" = 2000'



3:33pm
Recorded 31st Dec 1998
P.B. No. 822
Betsy B. Woolridge

City of Williamsburg & County of James City
Circuit Court: This PLAT was recorded on
4-21-2005
at 10:21 AM P.B. PG.
DOCUMENT # 050008584
BETSY B. WOOLRIDGE, CLERK
Betsy B. Woolridge Clerk

NOTE: FORD'S COLONY GOLF MAINTENANCE AREA IS PART OF TAX PARCEL (30-4)(1-2).
REFERENCE: 08-143, P.G. 211, 08-249, P.G. 199, 08-323, P.G. 334, P.B. 52 P.G. 77, 08-483, P.G. 828

NO ADJUSTMENTS TO THIS SHEET

COMPOSITE PLAT FOR DEED OF TRUST RELEASE PARCELS

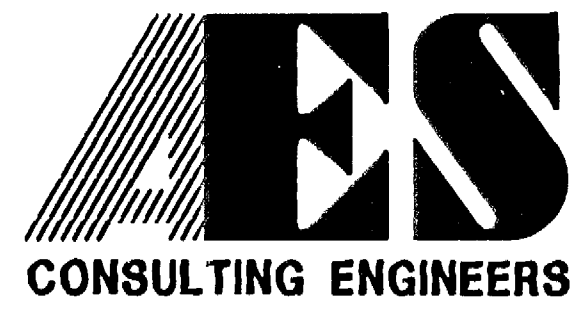
PLAT OF SURVEY
AND BOUNDARY LINE ADJUSTMENT
PREPARED FOR
FORD'S COLONY COUNTRY CLUB, INC.
GOLF MAINTENANCE AREA

POWHATAN DISTRICT JAMES CITY COUNTY VIRGINIA



| No. | DATE | REVISION / COMMENT / NOTE | BY |
|-----|---------|--|-----|
| 2 | 7/1/04 | REVISED TO SHOW ADDITIONAL EASEMENTS | LBA |
| 1 | 2/18/04 | REVISED TO SHOW ADDITIONAL BOUNDARY LINE ADJUSTMENTS | LBA |

| Designed SOW | Drawn RMJ |
|--------------------|-------------|
| Scale 1" = 50' | Date 8/9/98 |
| Project No. 5852 | |
| Drawing No. 7 OF 8 | |



5248 Olde Towne Road, Suite 1
Williamsburg, Virginia 23188
(757) 253-0040
Fax (757) 220-8994