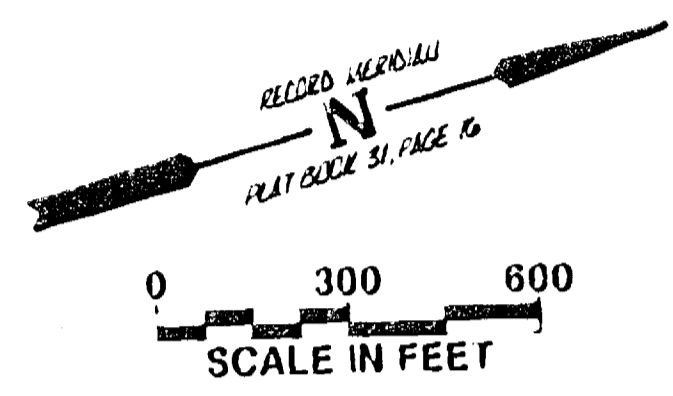
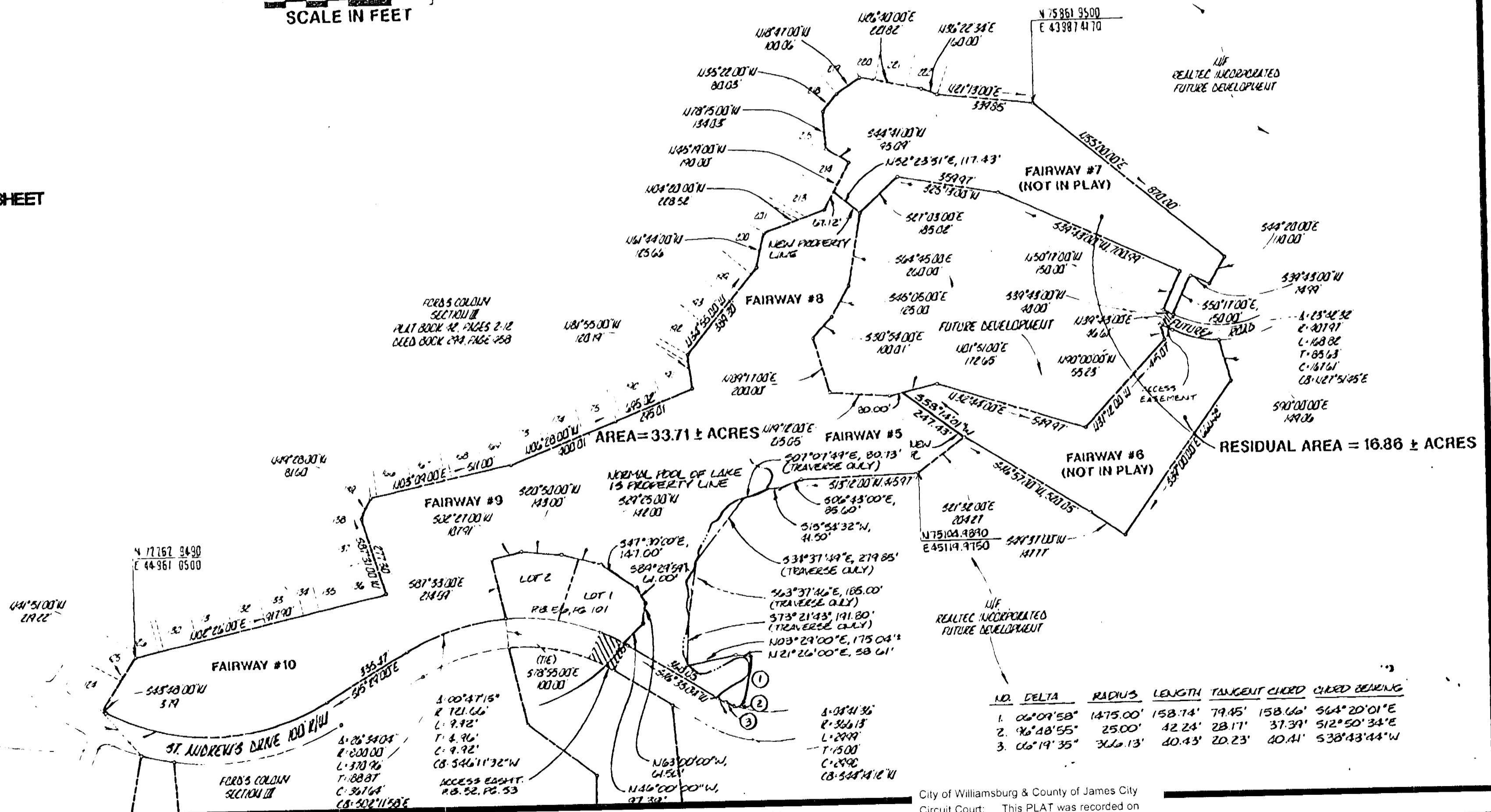


#050008584

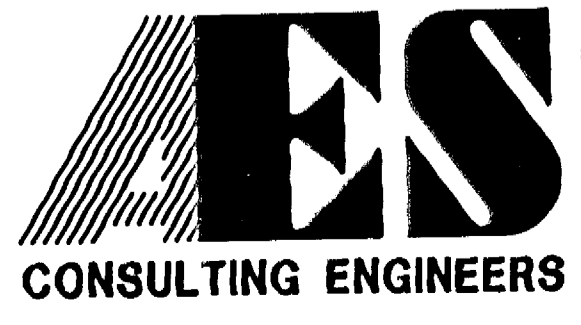


NO ADJUSTMENTS TO THIS SHEET



REFERENCE: P.B. 52, PG. 54

| NO. | DELTA     | RADIUS   | LENGTH  | TANGENT | CHORD   | CHORD BEARING |
|-----|-----------|----------|---------|---------|---------|---------------|
| 1.  | 06°09'58" | 1475.00' | 158.74' | 79.45'  | 158.06' | S64°20'01"E   |
| 2.  | 96°48'55" | 25.00'   | 42.24'  | 28.17'  | 37.39'  | S12°50'34"E   |
| 3.  | 06°19'35" | 306.13'  | 40.43'  | 20.23'  | 40.41'  | S38°43'44"W   |



5248 Olde Towne Road, Suite 1  
Williamsburg, Virginia 23188  
(757) 253-0040  
Fax (757) 220-8994

COMPOSITE PLAT FOR DEED OF TRUST RELEASE PARCELS

PLAT OF SURVEY  
AND BOUNDARY LINE ADJUSTMENT  
PREPARED FOR  
FORD'S COLONY COUNTRY CLUB, INC.  
CHAMPIONSHIP 18 HOLE GOLF COURSE  
FAIRWAY NO. 5, 8, 9 & 10

POWhatan DISTRICT      JAMES CITY COUNTY      VIRGINIA



City of Williamsburg & County of James City  
Circuit Court: This PLAT was recorded on  
4-21-2005  
at 10:21 AM, P.B. PG. 54  
DOCUMENT # 050008584  
BETSY B. WOOLRIDGE, CLERK  
Betsy B. Woolridge, Clerk

| No. | DATE    | REVISION / COMMENT / NOTE                            | BY  |
|-----|---------|--|-----|
| 2   | 7/1/04  | REVISED TO SHOW ADDITIONAL EASEMENTS                 | LBA |
| 1   | 2/18/04 | REVISED TO SHOW ADDITIONAL BOUNDARY LINE ADJUSTMENTS | LBA |

|                       |                |
|-----------------------|----------------|
| Designed<br>SOW       | Drawn<br>RMJ   |
| Scale<br>1"=300'      | Date<br>8/9/96 |
| Project No.<br>5652   |                |
| Drawing No.<br>3 OF 8 |                |