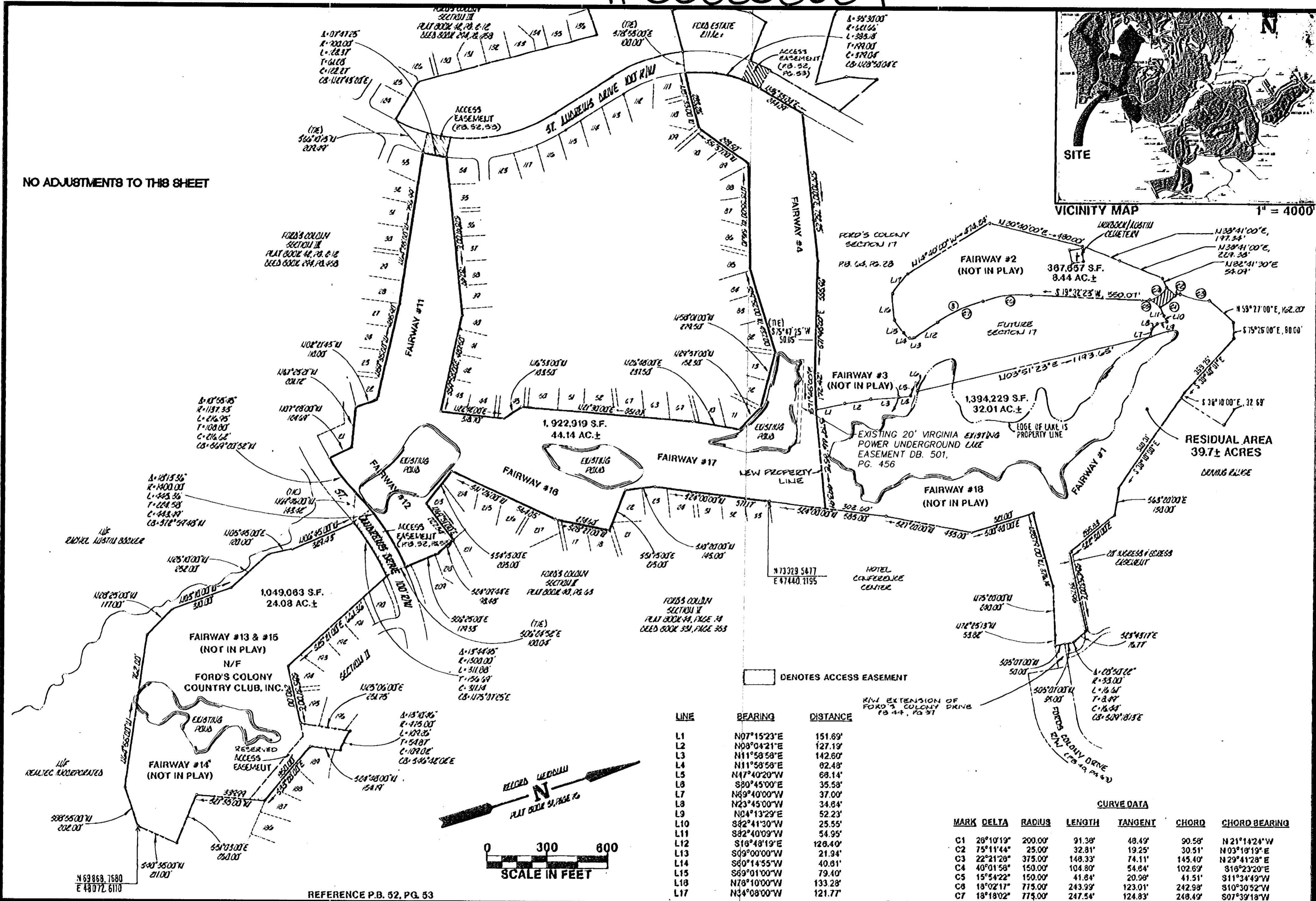


#050008584

NO ADJUSTMENTS TO THIS SHEET



VICINITY MAP 1" = 4000'



□ DENOTES ACCESS EASEMENT

LINE	BEARING	DISTANCE
L1	N07°15'23"E	151.69'
L2	N08°04'21"E	127.19'
L3	N11°58'58"E	142.60'
L4	N11°58'58"E	62.48'
L5	N47°40'20"W	68.14'
L6	S80°45'00"E	35.58'
L7	N69°40'00"W	37.00'
L8	N23°45'00"W	34.84'
L9	N04°13'29"E	52.23'
L10	S82°41'30"W	25.55'
L11	S82°40'09"W	54.95'
L12	S18°48'19"E	126.40'
L13	S09°00'00"W	21.94'
L14	S60°14'55"W	40.81'
L15	S69°01'00"W	79.40'
L16	N78°10'00"W	133.28'
L17	N34°08'00"W	121.77'

CURVE DATA

MARK	DELTA	RADIUS	LENGTH	TANGENT	CHORD	CHORD BEARING
C1	26°10'19"	200.00'	91.36'	48.49'	90.58'	N21°14'24"W
C2	75°11'44"	25.00'	32.81'	19.25'	30.51'	N03°18'19"E
C3	22°21'28"	375.00'	148.33'	74.11'	145.40'	N29°41'28"E
C4	40°01'58"	150.00'	104.80'	54.84'	102.69'	S18°23'20"E
C5	15°54'22"	150.00'	41.84'	20.98'	41.51'	S11°34'49"W
C6	18°02'17"	775.00'	243.99'	123.01'	242.98'	S10°30'52"W
C7	18°18'02"	775.00'	247.54'	124.83'	248.49'	S07°39'18"W



COMPOSITE PLAT FOR DEED OF TRUST RELEASE PARCELS

PLAT OF SURVEY AND BOUNDARY LINE ADJUSTMENT PREPARED FOR FORD'S COLONY COUNTRY CLUB, INC. CHAMPIONSHIP 18 HOLE GOLF COURSE FAIRWAY NO. 4, 11, 12, 14, 16, AND 17

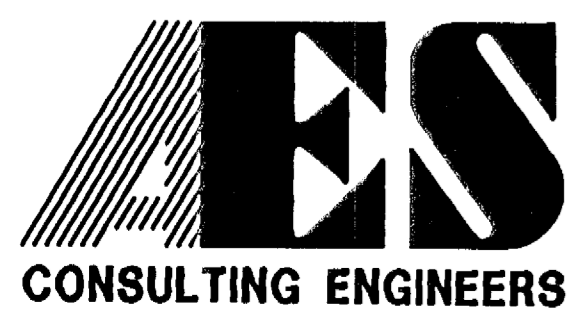
POWhatan DISTRICT JAMES CITY COUNTY VIRGINIA



City of Williamsburg & County of James City Circuit Court: This PLAT was recorded on 4-21-2005 at 10:21 AM, PB. PG. DOCUMENT # 050008584 BETSY B. WOOLRIDGE, CLERK

No.	DATE	REVISION / COMMENT / NOTE	BY
2	7/1/04	REVISED TO SHOW ADDITIONAL EASEMENTS	LBA
1	2/18/04	REVISED TO SHOW ADDITIONAL BOUNDARY LINE ADJUSTMENTS	LBA

Designed SOW	Drawn RMJ
Scale 1"=300'	Date 8/9/96
Project No. 5652	
Drawing No. 2 OF 8	



5248 Olde Towne Road, Suite 1
Williamsburg, Virginia 23188
(757) 253-0040
Fax (757) 220-8994