

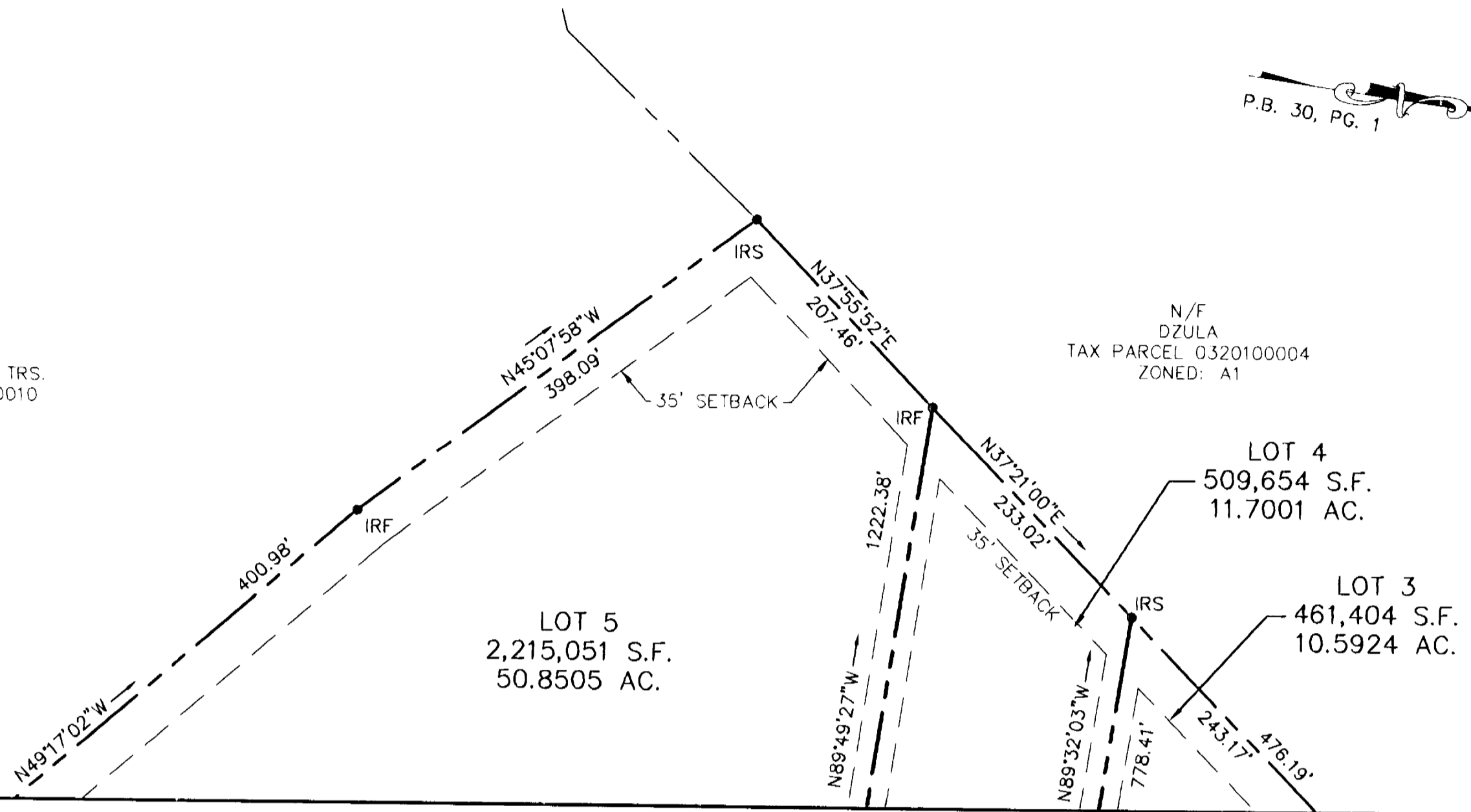
#050008445



P.B. 30, PG. 1

N/F  
JOHNATHAN KINNEY, TRS.  
TAX PARCEL 040100010  
ZONED: A1

N/F  
DZULA  
TAX PARCEL 0320100004  
ZONED: A1

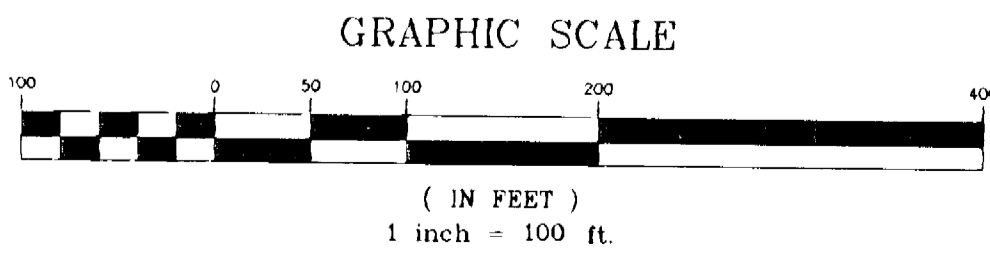


MATCHLINE SEE SHEET 4

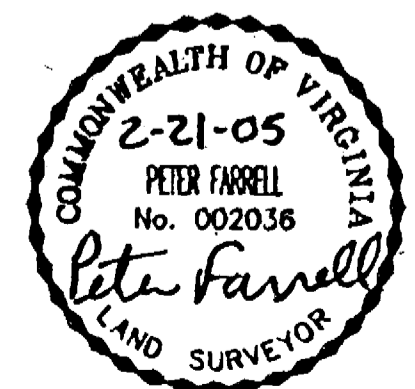
SUBDIVISION OF  
LOTS 1, 2, 3, 4 & 5  
BEING THE PROPERTY OF  
TOANO BUSINESS CENTRE, L.L.C.

STONEHOUSE DISTRICT,  
JAMES CITY COUNTY, VIRGINIA  
DATE: FEBRUARY 21, 2005

SCALE: 1"=100'  
SHEET 5 OF 5



City of Williamsburg & County of James City  
Circuit Court: This PLAT was recorded on  
4-20-2005  
at 9:05 AM on PB PG  
DOCUMENT # 050008445  
BETSY B. WOOLRIDGE, CLERK  
*Betsy B. Woolridge* Clerk



**LANDMARK**  
**DESIGN GROUP**  
Engineers • Planners • Surveyors  
Landscape Architects • Environmental Consultants

4029 Ironbound Road  
Suite 100  
Williamsburg, VA 23188  
Tel. (757) 253-2975  
Fax (757) 229-0049  
Email: lmdg@landmarkdg.com

5544 Greenwich Road  
Suite 200  
Virginia Beach, VA 23462  
Tel. (757) 473-2000  
Fax (757) 497-7933  
Email: limg@landmarkdg.com

DRAWN BY: AST  
CHKD. BY: PF

PROJ. NO.: 2004085-100.03  
DWG. NO.: 15606W

2004085-100.03 Brown-Cowles Boundary Survey-Cowles FIRST SUBD