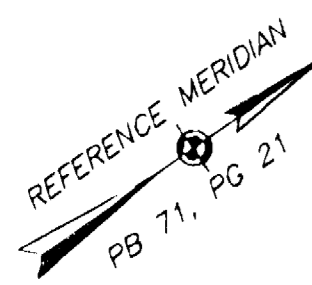
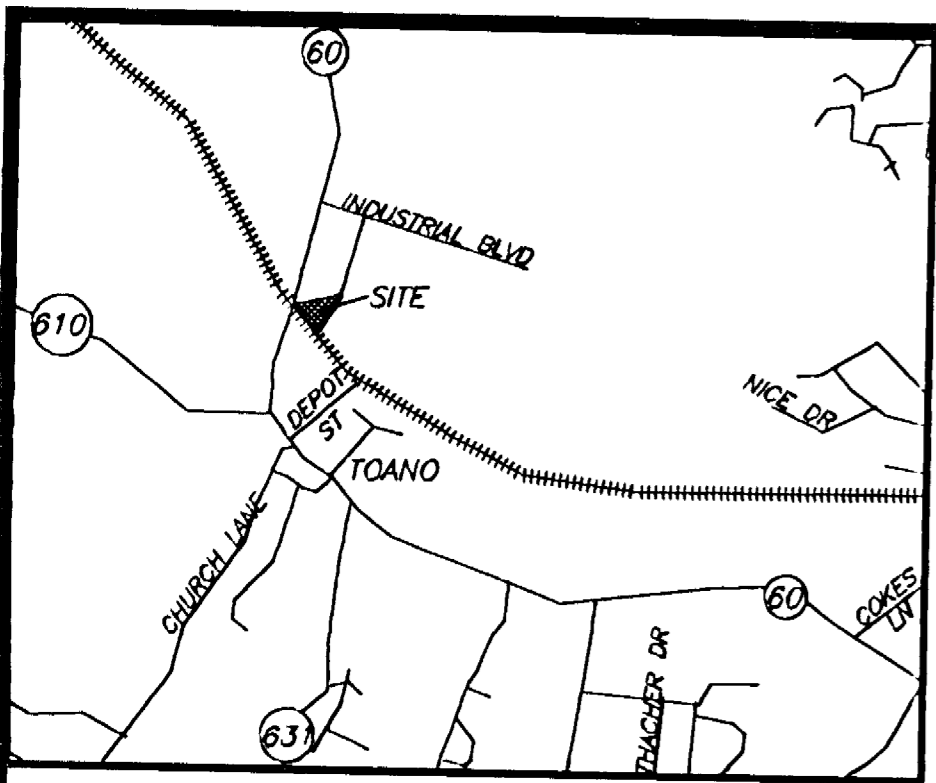


050004203

File: N:\Projects\2004\04-745\DWG\04-745, Plotted: 1-10-05 at 11:12, By: KEN



R=2821.58'
L=336.31'
T=168.36'
Δ=06°49'45"
CD=N37°54'57"W
CL=336.11'

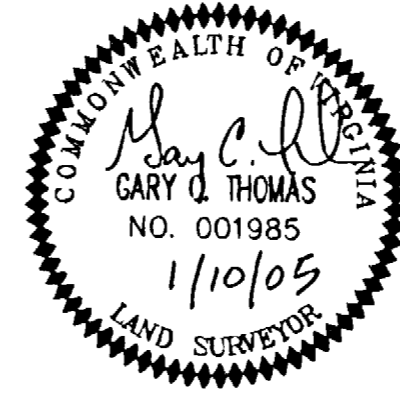
City of Williamsburg & County of James City
Circuit Court
This PLAT was recorded on
at 10:21 AM/PM PB
DOCUMENT # 050004203
PG
BETSY B. WOOLRIDGE, CLERK
Clerk

STATE OF VIRGINIA
JAMES CITY COUNTY
IN THE CLERK'S OFFICE OF THE CIRCUIT COURT FOR THE JAMES CITY COUNTY, VIRGINIA, THIS MAP WAS
PRESENTED AND ADMITTED TO RECORD AS THE LAW DIRECTS THIS 1st DAY OF June
2005 AT 10:21 AM/PM
INSTRUMENT # 050004203
TESTES: Betsy B. Woolridge
CLERK
TESTES: Claudia J. Woolridge
DEPUTY CLERK

STATE ROUTE NO. 60
160' R/W

I HEREBY CERTIFY THAT THIS PLAT IS ACCURATE AND
COMPLIES WITH THE CODE OF VIRGINIA OF 1950, AS
AMENDED 55-79.58, AND I FURTHER CERTIFY THAT ALL
UNITS OR PORTIONS THEREOF DEPICTED ON SAID PLANS,
PURSUANT TO THE CODE OF VIRGINIA 55-79.58B, HAVE
BEEN SUBSTANTIALLY COMPLETED.

SIGNED: Gary C. Thomas
GARY C. THOMAS, L.S.



PLAT OF
HANKINS BUSINESS CENTER
A CONDOMINIUM
JSRS ASSOCIATES L.L.C., A VIRGINIA LIMITED LIABILITY COMPANY
JAMES CITY COUNTY, VIRGINIA

DATE: 11/29/04	SHEET 1 OF 2	SCALE: 1"= 25'
PROJECT NO: 04-745	DRAWN BY: BSH	

THOMAS LAND SURVEYING, P.C.
SURVEYING-GPS-MAPPING
11830-A CANON BOULEVARD
NEWPORT NEWS, VIRGINIA 23606
(757) 873-2770

THIS PLAT SHALL BE PART OF THE DOCUMENTATION FOR
THE DECLARATION OF CONDOMINIUM DATED THE _____
DAY OF _____, 2005, RECORDED IN THE CLERK'S
OFFICE OF THE CIRCUIT COURT OF JAMES CITY COUNTY,
VIRGINIA INSTRUMENT # _____

PLAT OF HANKINS BUSINESS CENTER A CONDOMINIUM FOR
JSRS ASSOCIATES, L.L.C., A VIRGINIA LIMITED LIABILITY
COMPANY.

THE PROPERTY CONTAINED WITHIN THE LIMITS OF THIS
CONDOMINIUM WAS CONVEYED TO HANKINS BUSINESS
CENTER L.L.C. RECORDED AS INSTRUMENT #04015441,
DATED 6/17/04, IN THE CIRCUIT COURT OF JAMES CITY
COUNTY, VIRGINIA.

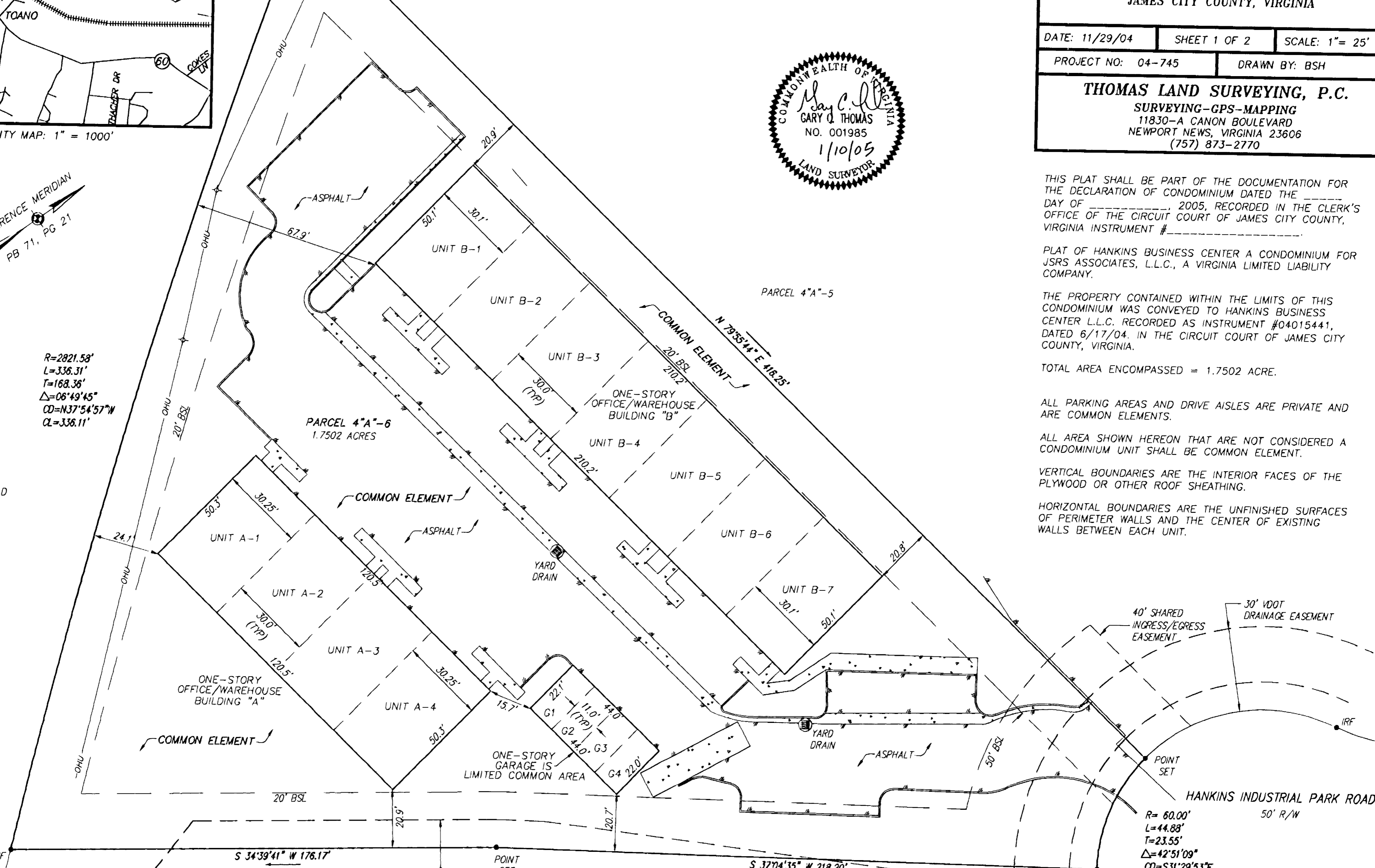
TOTAL AREA ENCOMPASSED = 1.7502 ACRE.

ALL PARKING AREAS AND DRIVE AISLES ARE PRIVATE AND
ARE COMMON ELEMENTS.

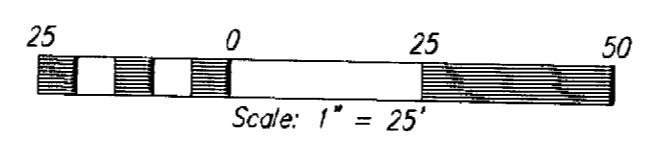
ALL AREA SHOWN HEREON THAT ARE NOT CONSIDERED A
CONDOMINIUM UNIT SHALL BE COMMON ELEMENT.

VERTICAL BOUNDARIES ARE THE INTERIOR FACES OF THE
PLYWOOD OR OTHER ROOF SHEATHING.

HORIZONTAL BOUNDARIES ARE THE UNFINISHED SURFACES
OF PERIMETER WALLS AND THE CENTER OF EXISTING
WALLS BETWEEN EACH UNIT.



R= 60.00'
L=44.88'
T=23.55'
Δ=42°51'09"
CD=S31°29'53"E
CL=43.84'



COMMON ELEMENT SHOWN HEREON ARE APPROXIMATE AND
SHALL BE CONSISTENT WITH DECLARATION OF CONDOMINIUM.

2 Larger Small Plat(s) Recorded
herewith as # 050004203