

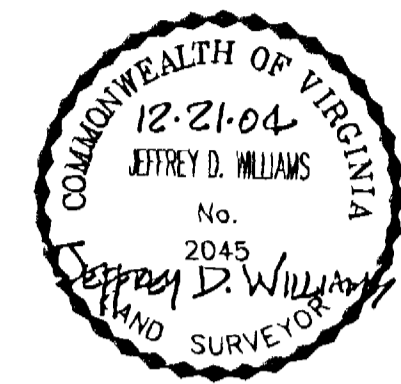
# 050002

EXHIBIT B-30  
SUPPLEMENTAL CONDOMINIUM PLAT  
OF  
WYNDHAM PLANTATION  
CONDOMINIUM

WILLIAMSBURG, VIRGINIA  
SCALE: 1"=100' DECEMBER 21, 2004  
JOHN E. SIRINE AND ASSOCIATES, LTD.  
SURVEYORS • ENGINEERS • PLANNERS  
VIRGINIA BEACH, VIRGINIA  
(757) 486-4910

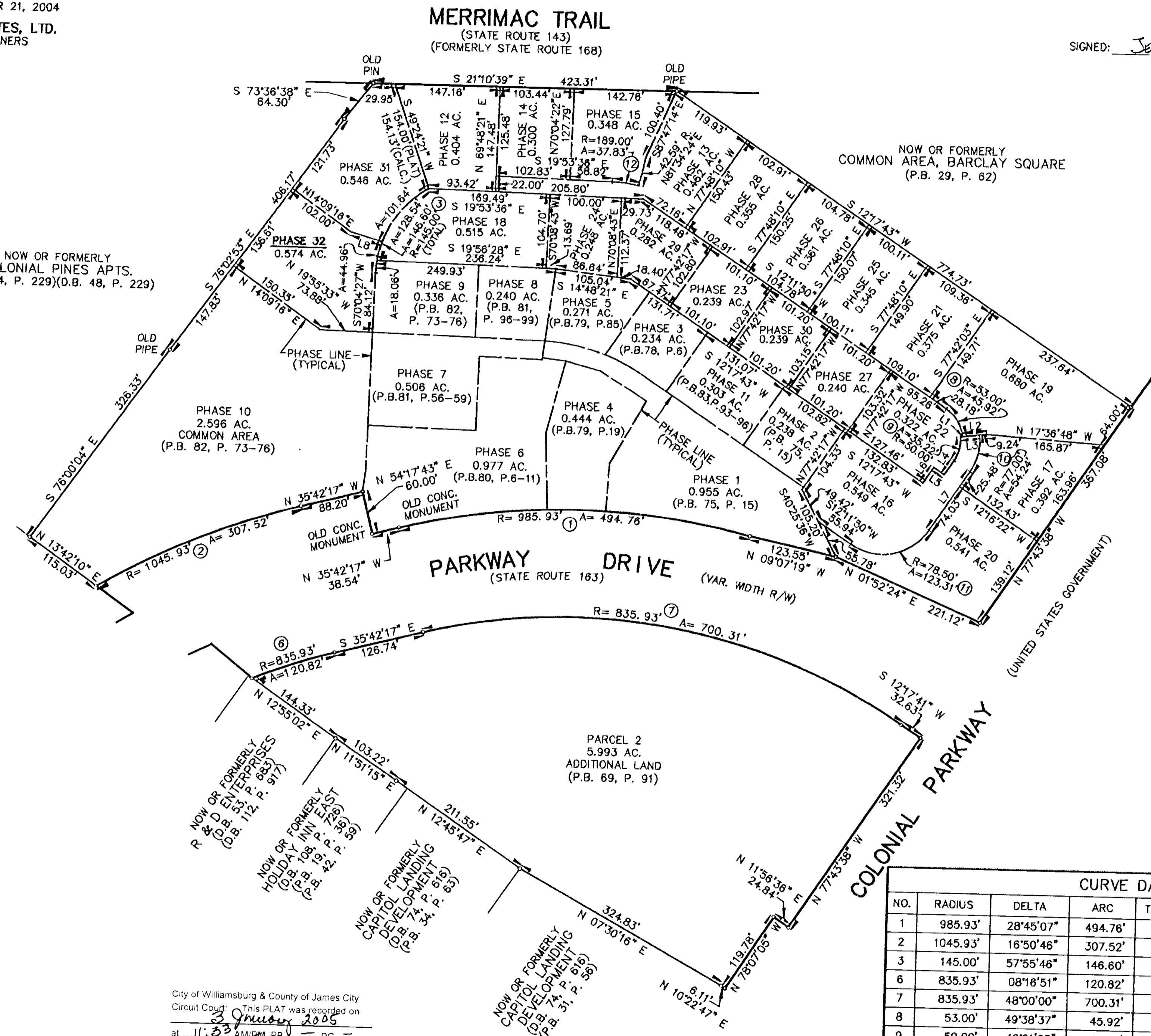
THE UNDERSIGNED CERTIFIES THAT THESE PLATS ARE ACCURATE AND COMPLY WITH THE PROVISIONS OF CODE OF VIRGINIA, SECTION 55-79.58.A AND THAT ALL UNITS OR PORTIONS THEREOF DEPICTED HEREON AND ALL COMMON ELEMENTS HAVE BEEN SUBSTANTIALLY COMPLETED, UNLESS OTHERWISE NOTED.

SIGNED: Jeffrey D. Williams  
JEFFREY D. WILLIAMS, L.S.



NOW OR FORMERLY  
COLONIAL PINES APTS.  
(D.B. 44, P. 229)(D.B. 48, P. 229)

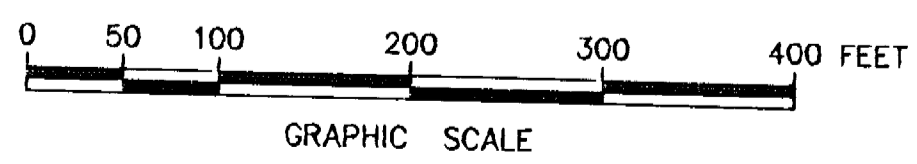
NOW OR FORMERLY  
COMMON AREA, BARCLAY SQUARE  
(P.B. 29, P. 62)



LINE DATA		
NO.	BEARING	DISTANCE
L1	N 28°09'33" W	3.00'
L2	N 28°09'33" W	33.24'
L3	N 28°09'33" W	27.00'
L4	S 77°48'10" E	23.89'
L5	S 12°11'50" W	17.97'
L6	S 77°48'10" E	26.65'
L7	S 77°48'10" E	99.51'
L8	N 04°43'07" W, N.R.	46.32'

CURVE DATA						
NO.	RADIUS	DELTA	ARC	TANGENT	CHORD	CHORD BEARING
1	985.93'	28°45'07"	494.76'	252.70'	489.58'	N 21°19'43" W
2	1045.93'	16°50'46"	307.52'	154.88'	306.42'	N 44°07'40" W
3	145.00'	57°55'46"	146.60'	80.26'	140.44'	N 80°57'40" W
6	835.93'	08°16'51"	120.82'	60.51'	120.71'	S 39°50'42" E
7	835.93'	48°00'00"	700.31'	372.18'	680.01'	S 11°42'18" E
8	53.00'	49°38'37"	45.92'	24.51'	44.50'	N 37°01'09" E
9	50.00'	40°21'23"	35.22'	18.37'	34.49'	N 82°01'09" E
10	77.00'	40°21'23"	54.24'	28.30'	53.12'	N 82°01'09" E
11	78.50'	90°00'00"	123.31'	78.50'	111.02'	S 32°48'10" E
12	189.00'	11°28'00"	37.83'	18.98'	37.76'	S 14°09'36" E

City of Williamsburg & County of James City  
Circuit Court: This PLAT was recorded on  
3 January 2005  
at 11:53 AM P.M. PG. —  
DOCUMENT # 050002  
BETSY B. WOOLRIDGE, CLERK  
Betsy B. Woolridge Clerk

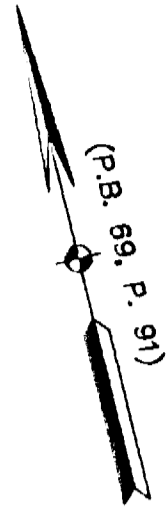


# 050002

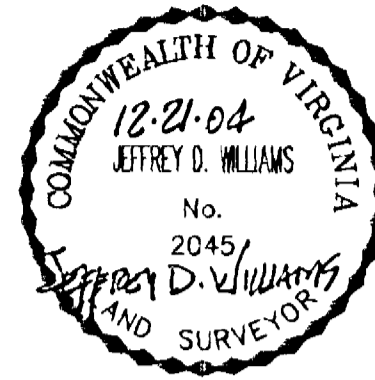
EXHIBIT B-30  
SUPPLEMENTAL CONDOMINIUM PLAT  
OF  
WYNDHAM PLANTATION  
CONDOMINIUM

WILLIAMSBURG, VIRGINIA  
SCALE: 1"=20' DECEMBER 21, 2004

JOHN E. SIRINE AND ASSOCIATES, LTD.  
SURVEYORS • ENGINEERS • PLANNERS  
VIRGINIA BEACH, VIRGINIA  
(757) 486-4910

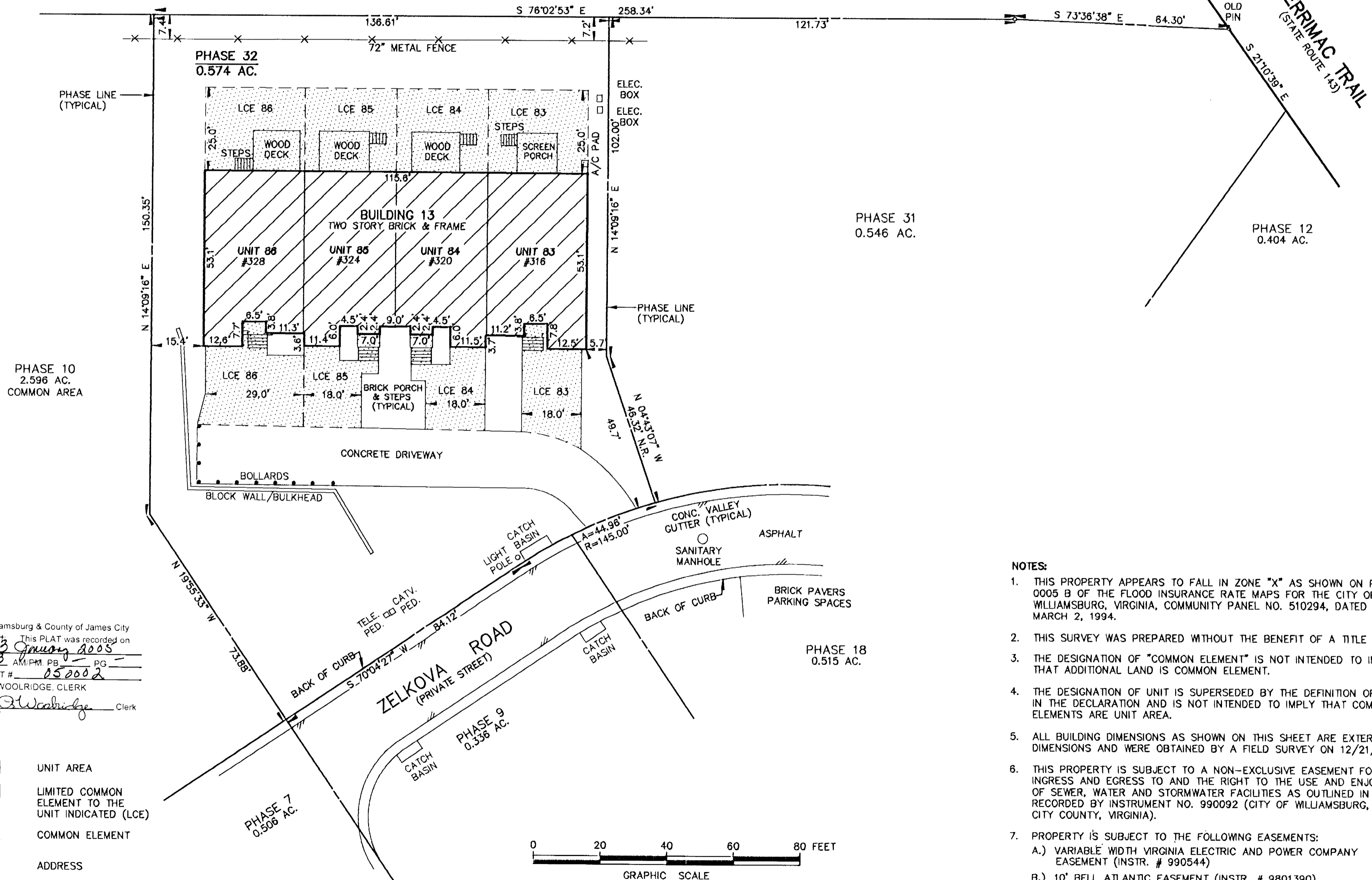


THE UNDERSIGNED CERTIFIES THAT THESE PLATS ARE ACCURATE AND COMPLY WITH THE PROVISIONS OF CODE OF VIRGINIA, SECTION 55-79.58.A AND THAT ALL UNITS OR PORTIONS THEREOF DEPICTED HEREON AND ALL COMMON ELEMENTS HAVE BEEN SUBSTANTIALLY COMPLETED.



SIGNED: Jeffrey D. Williams  
JEFFREY D. WILLIAMS, L.S.

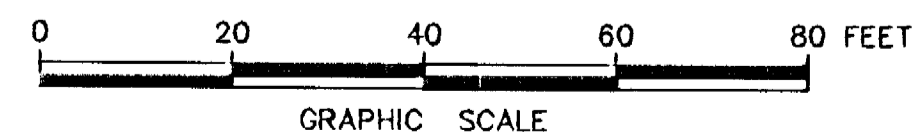
NOW OR FORMERLY  
COLONIAL PINES APTS.  
(D.B. 44, P. 229)(D.B. 48, P. 229)



City of Williamsburg & County of James City  
Circuit Court. This PLAT was recorded on  
3 January 2005  
at 11:33 AM/PM, PG —  
DOCUMENT # 050002  
BETSY B. WOOLRIDGE, CLERK  
Betsy B. Woolridge Clerk

**LEGEND**

	UNIT AREA
	LIMITED COMMON ELEMENT TO THE UNIT INDICATED (LCE)
	COMMON ELEMENT
# _____	ADDRESS



- NOTES:**
1. THIS PROPERTY APPEARS TO FALL IN ZONE "X" AS SHOWN ON PANEL 0005 B OF THE FLOOD INSURANCE RATE MAPS FOR THE CITY OF WILLIAMSBURG, VIRGINIA, COMMUNITY PANEL NO. 510294, DATED MARCH 2, 1994.
  2. THIS SURVEY WAS PREPARED WITHOUT THE BENEFIT OF A TITLE REPORT.
  3. THE DESIGNATION OF "COMMON ELEMENT" IS NOT INTENDED TO IMPLY THAT ADDITIONAL LAND IS COMMON ELEMENT.
  4. THE DESIGNATION OF UNIT IS SUPERSEDED BY THE DEFINITION OF UNIT IN THE DECLARATION AND IS NOT INTENDED TO IMPLY THAT COMMON ELEMENTS ARE UNIT AREA.
  5. ALL BUILDING DIMENSIONS AS SHOWN ON THIS SHEET ARE EXTERIOR DIMENSIONS AND WERE OBTAINED BY A FIELD SURVEY ON 12/21/04.
  6. THIS PROPERTY IS SUBJECT TO A NON-EXCLUSIVE EASEMENT FOR INGRESS AND EGRESS TO AND THE RIGHT TO THE USE AND ENJOYMENT OF SEWER, WATER AND STORMWATER FACILITIES AS OUTLINED IN DEED RECORDED BY INSTRUMENT NO. 990092 (CITY OF WILLIAMSBURG, JAMES CITY COUNTY, VIRGINIA).
  7. PROPERTY IS SUBJECT TO THE FOLLOWING EASEMENTS:  
A.) VARIABLE WIDTH VIRGINIA ELECTRIC AND POWER COMPANY EASEMENT (INSTR. # 990544)  
B.) 10' BELL ATLANTIC EASEMENT (INSTR. # 9801390)

#050002

EXHIBIT B-30  
 SUPPLEMENTAL CONDOMINIUM PLAN  
 OF  
 WYNDHAM PLANTATION  
 CONDOMINIUM

WILLIAMSBURG, VIRGINIA  
 SCALE: 1"=10' DECEMBER 21, 2004

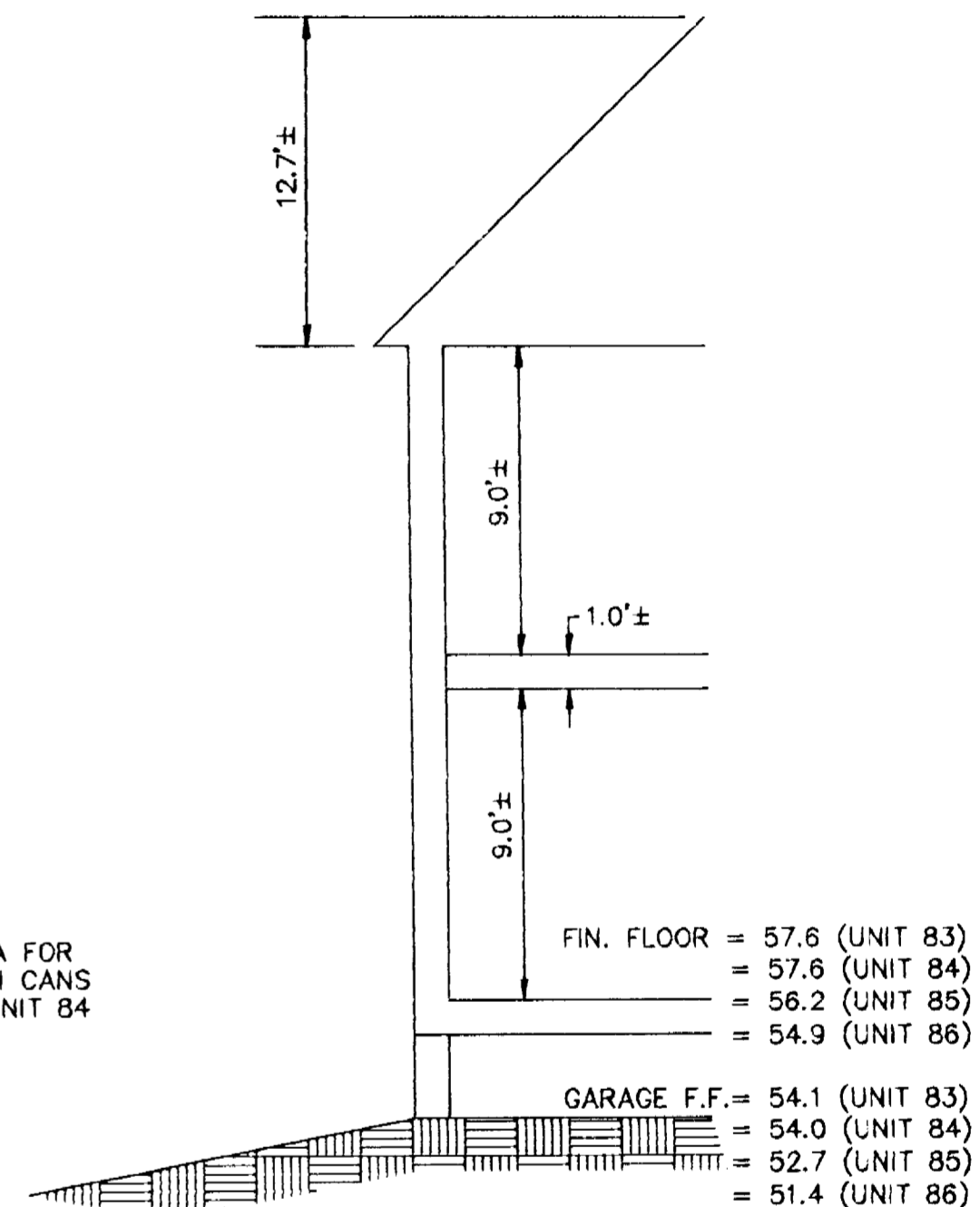
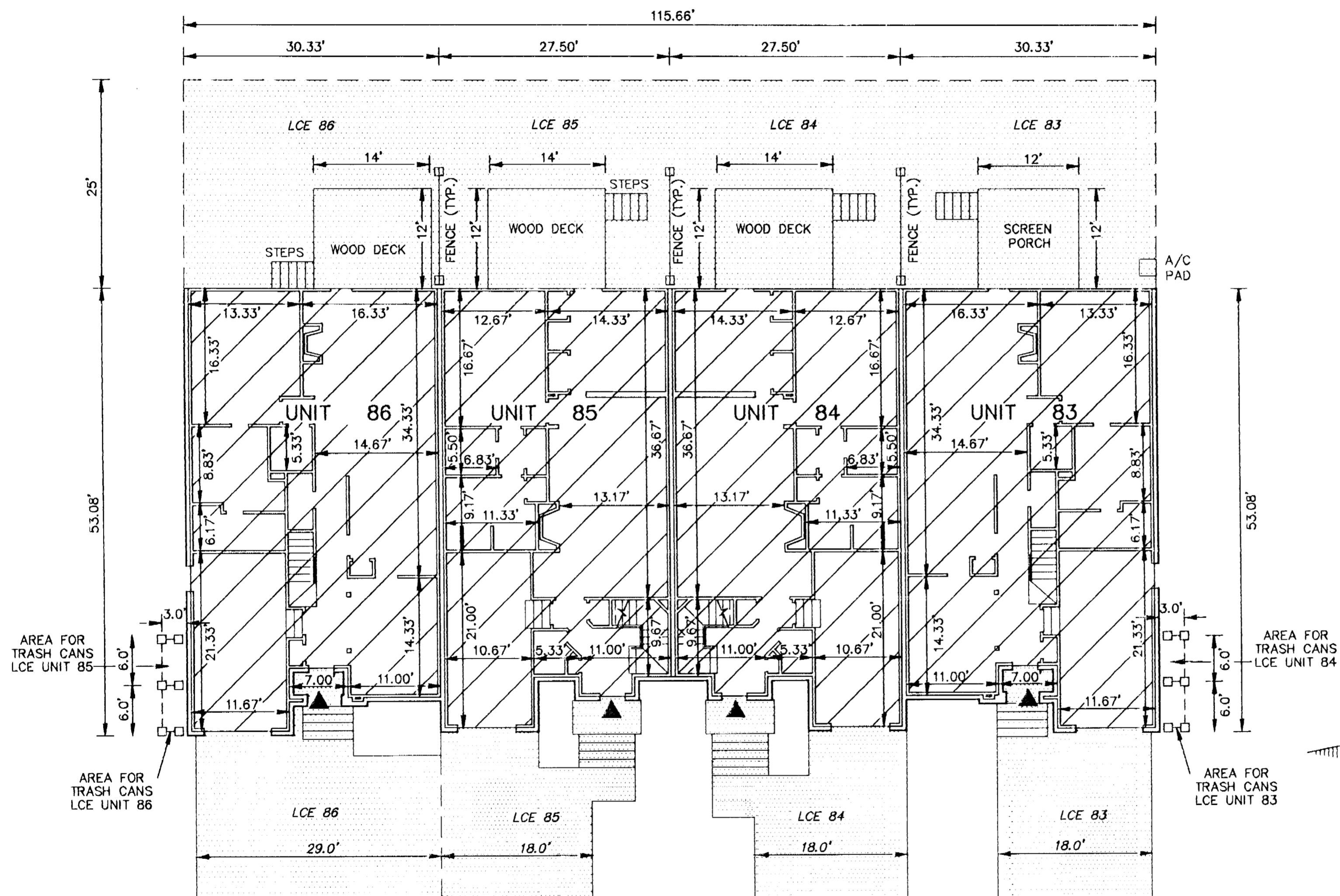
JOHN E. SIRINE AND ASSOCIATES, LTD.  
 SURVEYORS • ENGINEERS • PLANNERS  
 VIRGINIA BEACH, VIRGINIA  
 (757) 486-4910

NOTES:

- BUILDING DIMENSIONS SHOWN HEREON ARE INTERIOR DIMENSIONS. THESE DIMENSIONS ARE IN FEET AND WERE TAKEN FROM PLANS SUPPLIED ENTITLED "WYNDHAM PLANTATION AT WILLIAMSBURG, FLOOR PLANS" BY PROGRESSIVE DESIGNS DATED 11/19/98.
- INTERIOR UNIT CONFIGURATIONS AND PARTITIONS AS DEPICTED HEREON ARE FOR THE PURPOSE OF ILLUSTRATION ONLY AND MAY NOT REPRESENT THE INTERIOR OF A UNIT AS ACTUALLY CONSTRUCTED.

FIRST FLOOR - BUILDING 13

SCALE: 1"=10'



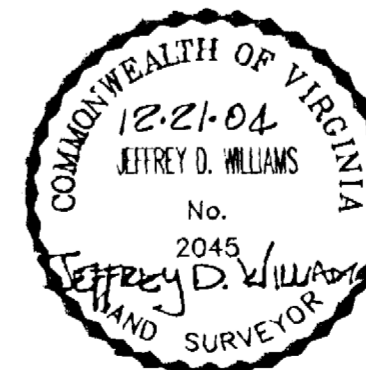
SCALE: 1"=5'

- UNIT AREA
- LIMITED COMMON ELEMENT TO THE UNIT INDICATED (LCE)
- INDICATES FRONT ENTRANCE TO UNIT

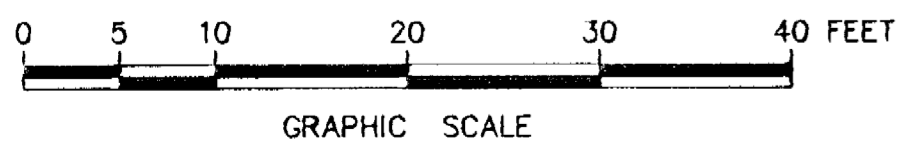
THE UNDERSIGNED CERTIFIES THAT THESE PLANS ARE ACCURATE AND COMPLY WITH THE PROVISIONS OF CODE OF VIRGINIA, SECTION 55-79.58.B AND THAT ALL UNITS OR PORTIONS THEREOF DEPICTED HEREON AND ALL COMMON ELEMENTS HAVE BEEN SUBSTANTIALLY COMPLETED, UNLESS OTHERWISE NOTED.

PHASE	UNIT No.	UNIT ADDRESS	UNIT AREA
32	83	316 ZELKOVA ROAD	1,853 S.F.
32	84	320 ZELKOVA ROAD	1,800 S.F.
32	85	324 ZELKOVA ROAD	1,800 S.F.
32	86	328 ZELKOVA ROAD	1,853 S.F.

SIGNED: Jeffrey D. Williams  
 JEFFREY D. WILLIAMS, L.S.



City of Williamsburg & County of James City  
 Circuit Court. This PLAT was recorded on  
3 January 2005  
 at 11:33 AM/PM PG. -  
 DOCUMENT # 050002  
 BETSY B. WOOLRIDGE, CLERK  
Betsy B. Woolridge Clerk



GRAPHIC SCALE

# # 050002

EXHIBIT B-30  
 SUPPLEMENTAL CONDOMINIUM PLAN  
 OF  
 WYNDHAM PLANTATION  
 CONDOMINIUM

WILLIAMSBURG, VIRGINIA  
 SCALE: 1"=10' DECEMBER 21, 2004

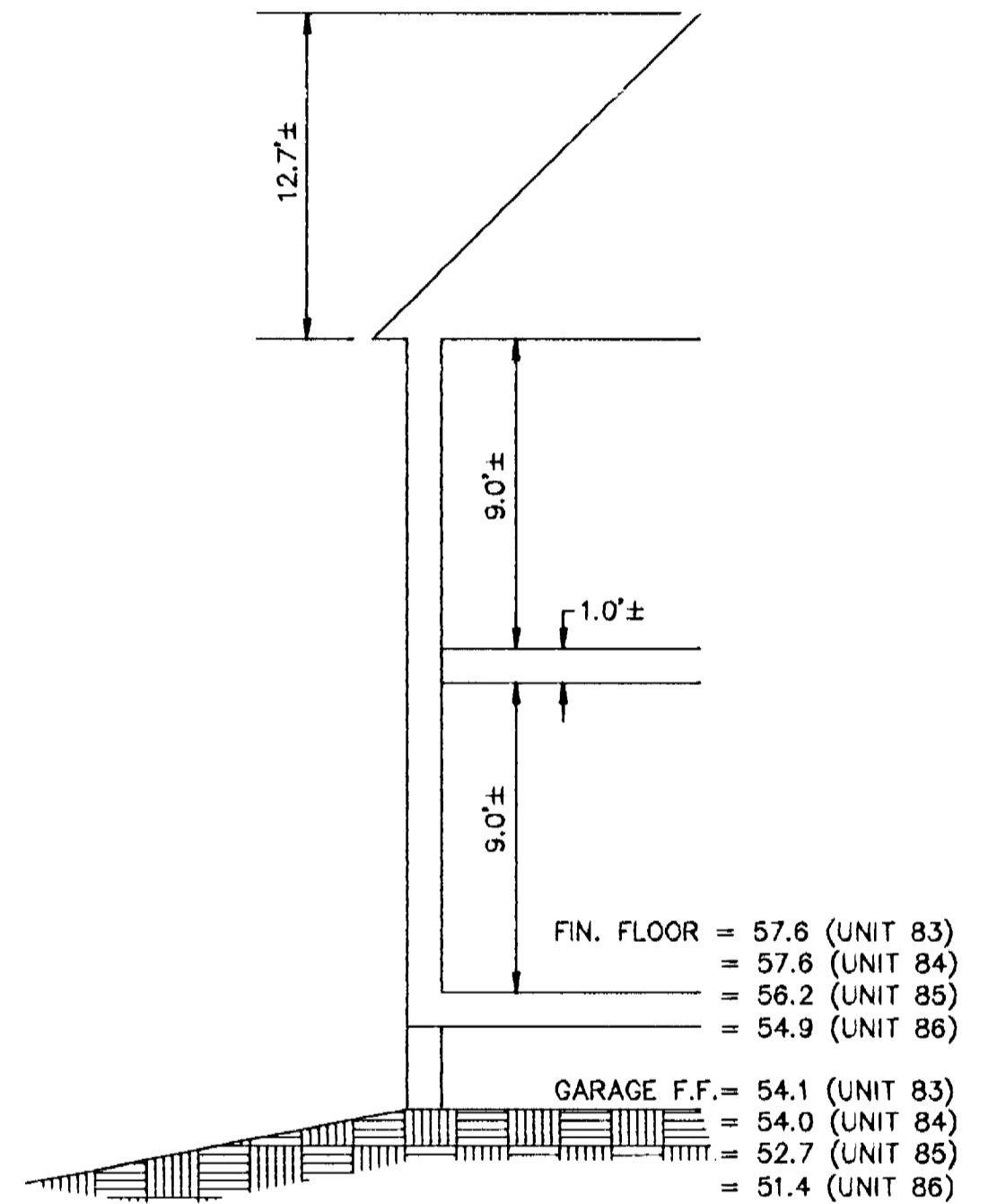
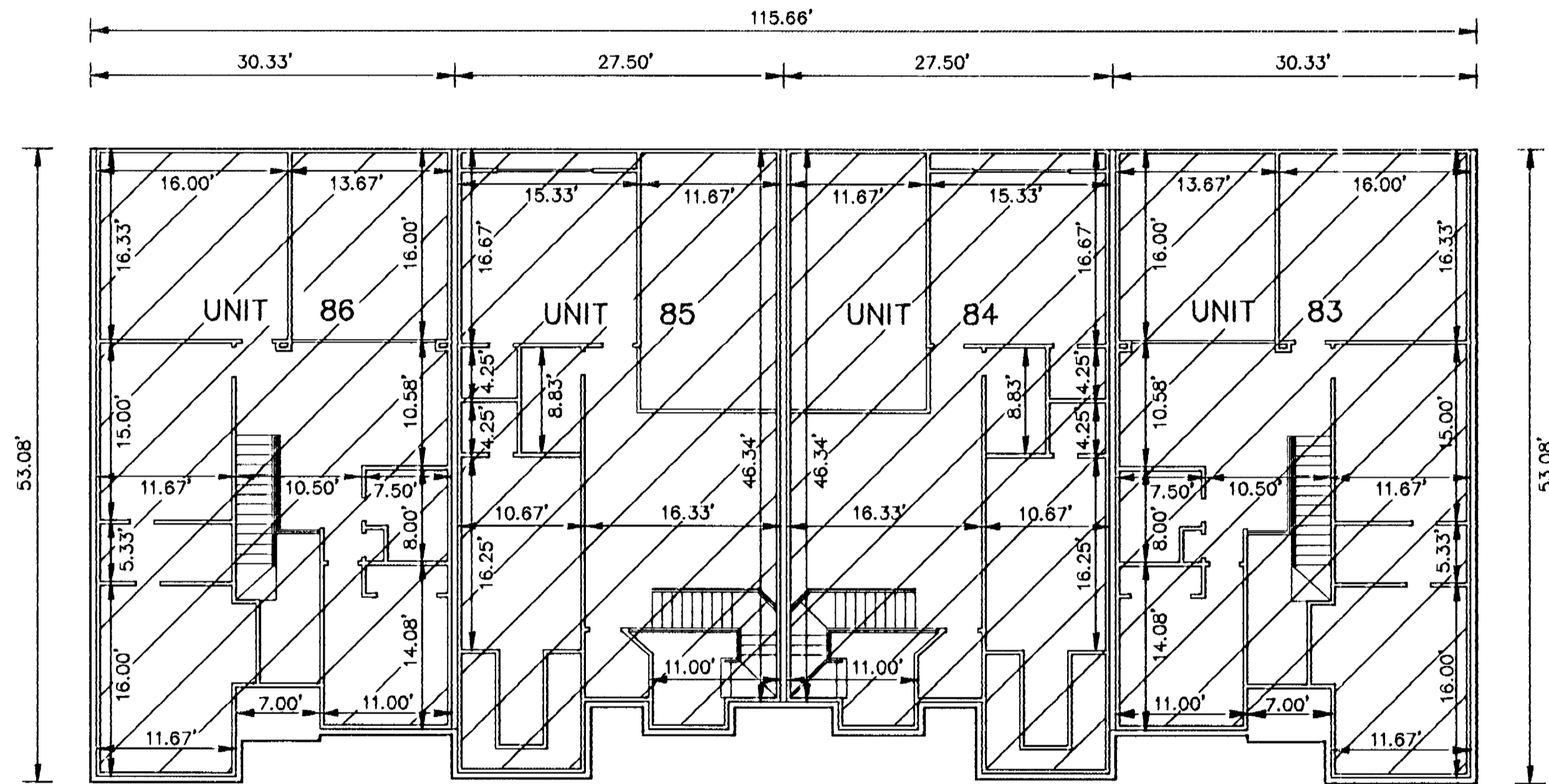
JOHN E. SIRINE AND ASSOCIATES, LTD.  
 SURVEYORS • ENGINEERS • PLANNERS  
 VIRGINIA BEACH, VIRGINIA  
 (757) 486-4910

NOTES:

- BUILDING DIMENSIONS SHOWN HEREON ARE INTERIOR DIMENSIONS. THESE DIMENSIONS ARE IN FEET AND WERE TAKEN FROM PLANS SUPPLIED ENTITLED "WYNDHAM PLANTATION AT WILLIAMSBURG, FLOOR PLANS" BY PROGRESSIVE DESIGNS DATED 11/19/98.
- INTERIOR UNIT CONFIGURATIONS AND PARTITIONS AS DEPICTED HEREON ARE FOR THE PURPOSE OF ILLUSTRATION ONLY AND MAY NOT REPRESENT THE INTERIOR OF A UNIT AS ACTUALLY CONSTRUCTED.

SECOND FLOOR - BUILDING 13

SCALE: 1"=10'



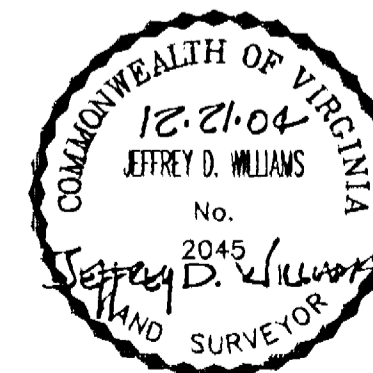
SCALE: 1"=5'

UNIT AREA

PHASE	UNIT No.	UNIT ADDRESS	UNIT AREA
32	83	316 ZELKOVA ROAD	1,853 S.F.
32	84	320 ZELKOVA ROAD	1,800 S.F.
32	85	324 ZELKOVA ROAD	1,800 S.F.
32	86	328 ZELKOVA ROAD	1,853 S.F.

THE UNDERSIGNED CERTIFIES THAT THESE PLANS ARE ACCURATE AND COMPLY WITH THE PROVISIONS OF CODE OF VIRGINIA, SECTION 55-79.58.B AND THAT ALL UNITS OR PORTIONS THEREOF DEPICTED HEREON AND ALL COMMON ELEMENTS HAVE BEEN SUBSTANTIALLY COMPLETED.

SIGNED: Jeffrey D. Williams  
 JEFFREY D. WILLIAMS, L.S.



City of Williamsburg & County of James City  
 Circuit Court: This PLAT was recorded on  
3 January 2005  
 at 11:33 AM/PM, PG. —  
 DOCUMENT # 050002  
 BETSY B. WOOLRIDGE, CLERK  
Betsy B. Woolridge Clerk

