

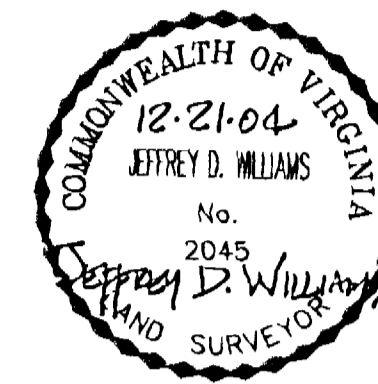
050002

EXHIBIT B-30
SUPPLEMENTAL CONDOMINIUM PLAT
OF
WYNDHAM PLANTATION
CONDOMINIUM

WILLIAMSBURG, VIRGINIA
SCALE: 1"=100' DECEMBER 21, 2004
JOHN E. SIRINE AND ASSOCIATES, LTD.
SURVEYORS • ENGINEERS • PLANNERS
VIRGINIA BEACH, VIRGINIA
(757) 486-4910

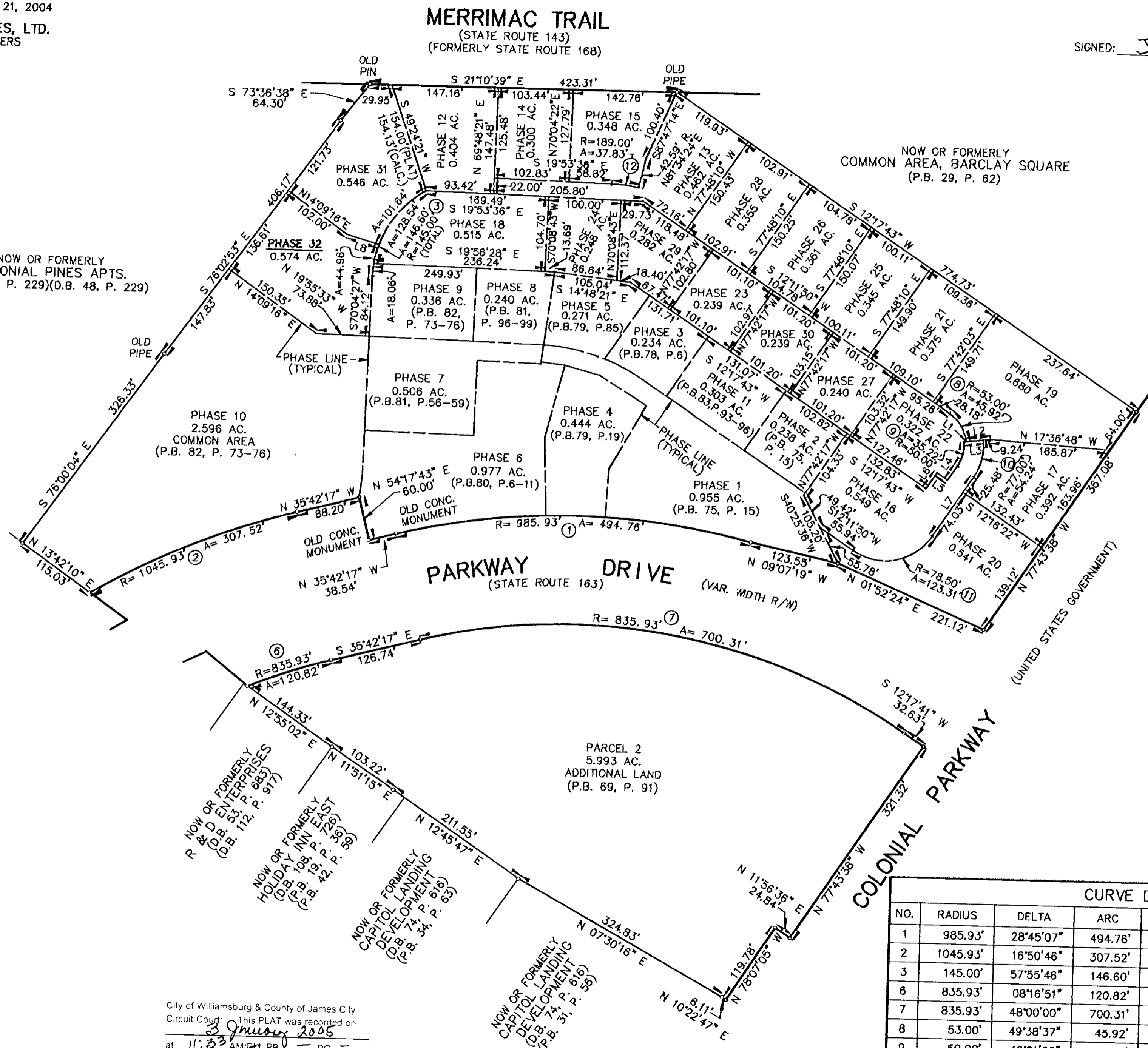
THE UNDERSIGNED CERTIFIES THAT THESE PLATS ARE ACCURATE AND COMPLY WITH THE PROVISIONS OF CODE OF VIRGINIA, SECTION 55-79.58.A AND THAT ALL UNITS OR PORTIONS THEREOF DEPICTED HEREON AND ALL COMMON ELEMENTS HAVE BEEN SUBSTANTIALLY COMPLETED, UNLESS OTHERWISE NOTED.

SIGNED: Jeffrey D. Williams
JEFFREY D. WILLIAMS, L.S.



NOW OR FORMERLY
COLONIAL PINES APTS.
(D.B. 44, P. 229)(D.B. 48, P. 229)

NOW OR FORMERLY
COMMON AREA, BARCLAY SQUARE
(P.B. 29, P. 62)



LINE DATA		
NO.	BEARING	DISTANCE
L1	N 28°09'33" W	3.00'
L2	N 28°09'33" W	33.24'
L3	N 28°09'33" W	27.00'
L4	S 77°48'10" E	23.89'
L5	S 12°11'50" W	17.97'
L6	S 77°48'10" E	26.65'
L7	S 77°48'10" E	99.51'
L8	N 04°43'07" W, N.R.	46.32'

CURVE DATA						
NO.	RADIUS	DELTA	ARC	TANGENT	CHORD	CHORD BEARING
1	985.93'	28°45'07"	494.76'	252.70'	489.58'	N 21°19'43" W
2	1045.93'	16°50'46"	307.52'	154.88'	306.42'	N 44°07'40" W
3	145.00'	57°55'46"	146.60'	80.26'	140.44'	N 80°57'40" W
6	835.93'	08°16'51"	120.82'	60.51'	120.71'	S 39°50'42" E
7	835.93'	48°00'00"	700.31'	372.18'	680.01'	S 11°42'18" E
8	53.00'	49°38'37"	45.92'	24.51'	44.50'	N 37°01'09" E
9	50.00'	40°21'23"	35.22'	18.37'	34.49'	N 82°01'09" E
10	77.00'	40°21'23"	54.24'	28.30'	53.12'	N 82°01'09" E
11	78.50'	90°00'00"	123.31'	78.50'	111.02'	S 32°48'10" E
12	189.00'	11°28'00"	37.83'	18.98'	37.76'	S 14°09'36" E

City of Williamsburg & County of James City
Circuit Court: This PLAT was recorded on
3 January 2005
at 11:53 AM P.M. PG. —
DOCUMENT # 050002
BETSY B. WOOLRIDGE, CLERK
Betsy B. Woolridge Clerk

