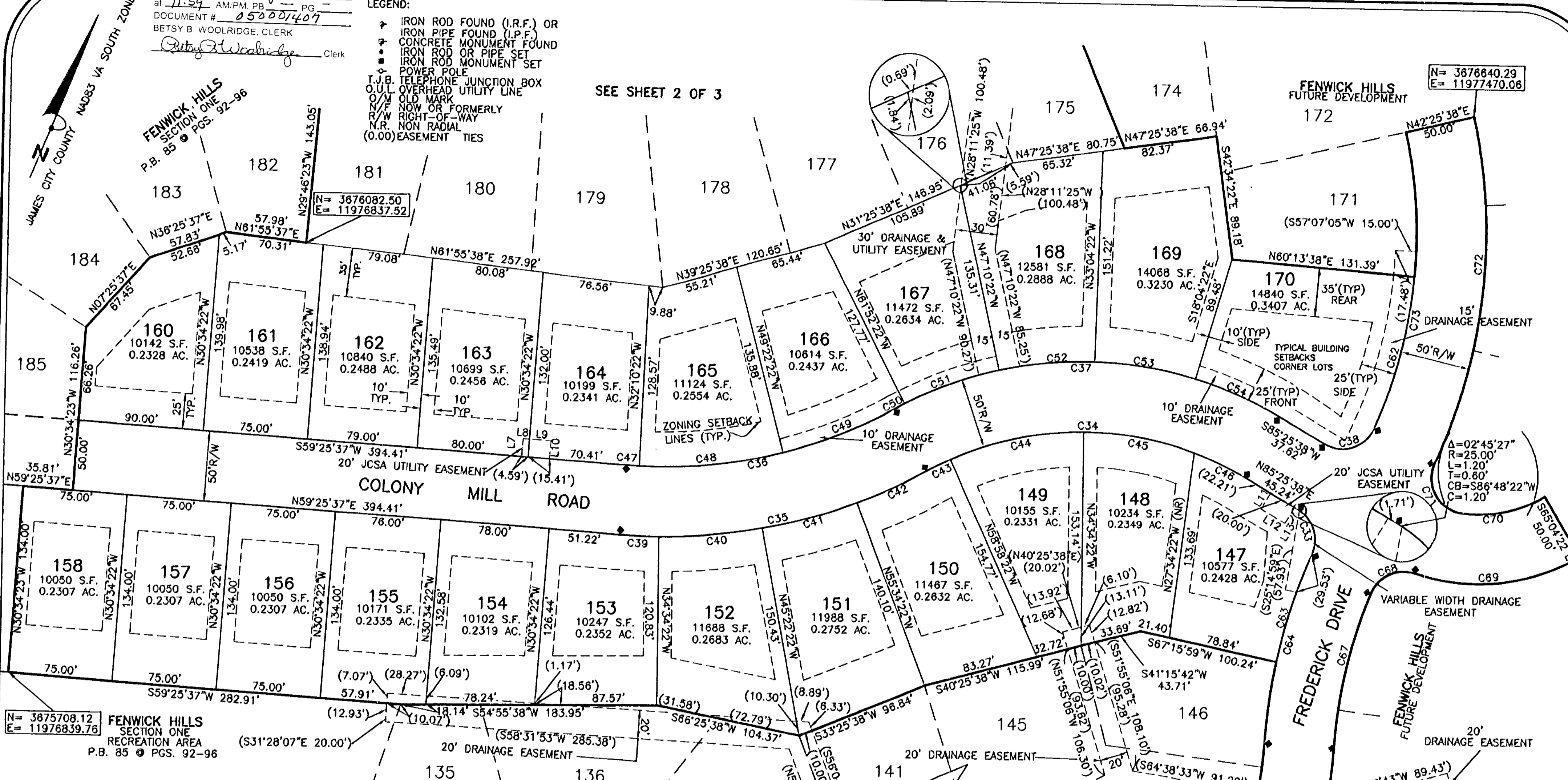


#050001407

City of Williamsburg & County of James City
 Circuit Court: This PLAT was recorded on
 26 January 2004
 at 11:59 AM/PM, PG. PG.
 DOCUMENT # 050001407
 BETSY B. WOOLRIDGE, CLERK
Betsy B. Woolridge Clerk

LEGEND:
 * IRON ROD FOUND (I.R.F.) OR
 * IRON PIPE FOUND (I.P.F.)
 * CONCRETE MONUMENT FOUND
 * IRON ROD OR PIPE SET
 * IRON ROD MONUMENT SET
 * POWER POLE
 * T.J.B. TELEPHONE JUNCTION BOX
 * O.U.L. OVERHEAD UTILITY LINE
 * O.M. OLD MARK
 * N/F NOW OR FORMERLY
 * R/W RIGHT-OF-WAY
 * N.R. NON RADIAL
 * (0.00) EASEMENT TIES

SEE SHEET 2 OF 3



N= 3675708.12
 E= 11976839.76
FENWICK HILLS SECTION ONE RECREATION AREA
 P.B. 85 PGS. 92-96

N= 3676840.29
 E= 11977470.08

1-9-2004
GORDON L. JONES
 001774
 LAND SURVEYOR

CURVE TABLE

NUMBER	DELTA	RADIUS	LENGTH	TANGENT	CHORD BRG.	CHORD
C33	83°29'33"	25.00	36.43	22.31	N52°49'35"E	33.29
C34	59°00'00"	231.29	238.17	130.86	S55°55'38"W	227.78
C35	33°00'00"	396.35	228.28	117.41	N42°55'38"E	225.14
C36	33°00'00"	346.35	199.49	102.59	N42°55'38"E	196.74
C37	59°00'00"	281.29	289.65	159.14	S55°55'38"W	277.02
C38	96°07'52"	25.00	41.95	27.83	N37°21'42"E	37.20
C39	04°00'00"	396.35	27.67	13.84	N57°25'38"E	27.87
C40	10°48'00"	396.35	74.71	37.47	N50°01'38"E	74.60
C41	10°12'00"	396.35	70.56	35.37	N39°31'38"E	70.47
C42	08°00'00"	396.35	55.34	27.72	N30°25'38"E	55.30
C43	04°36'00"	231.29	18.57	9.29	S28°43'38"W	18.56
C44	24°24'00"	231.29	98.50	50.01	S43°13'38"W	97.75
C45	20°08'06"	231.29	81.28	41.06	S65°29'41"W	80.86
C46	09°51'54"	231.29	39.82	19.96	S80°29'41"W	39.77
C47	01°36'00"	346.35	9.87	4.84	N58°37'38"E	9.87
C48	17°12'00"	346.35	103.97	52.38	N49°13'38"E	103.58
C49	14°12'00"	346.35	85.84	43.14	N33°31'38"E	85.62
C50	01°42'00"	281.29	8.35	4.17	S27°16'38"W	8.35
C51	14°42'00"	281.29	72.17	36.28	S35°28'38"W	71.97
C52	11°02'35"	281.29	54.22	27.19	S51°24'20"W	54.13
C53	15°00'00"	281.29	73.84	37.03	S64°25'38"W	73.43
C54	13°30'00"	281.29	66.28	33.29	S78°40'38"W	66.12
C62	19°04'08"	337.06	112.18	56.81	S20°14'18"E	111.66
C63	11°39'12"	402.05	81.77	41.03	S16°54'25"E	81.63

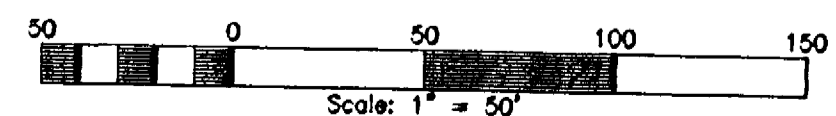
LINE TABLE

NUMBER	DIRECTION	DISTANCE
L7	S30°34'22"E	13.00'
L8	N59°25'38"E	4.59'
L9	N59°25'38"E	15.41'
L10	S30°34'22"E	13.00'
L11	S04°34'22"E	13.00'
L12	S85°25'38"W	20.00'
L13	N04°34'22"W	13.00'
L14	N15°52'45"W	27.36'
L15	S76°01'18"W	20.01'
L16	S15°52'45"E	28.03'

CURVE TABLE

NUMBER	DELTA	RADIUS	LENGTH	TANGENT	CHORD BRG.	CHORD
C64	19°59'33"	402.05	140.29	70.87	N21°04'35"W	139.58
C65	14°32'41"	275.27	69.88	35.13	S23°48'01"E	69.69
C66	14°32'41"	325.27	82.57	41.51	S23°48'01"E	82.35
C67	18°39'18"	352.05	114.63	57.82	N21°44'43"W	114.12
C68	85°46'31"	25.00	37.43	23.22	N30°28'12"E	34.03
C69	48°25'50"	145.03	122.59	65.23	S49°08'33"W	118.97
C70	37°19'24"	95.03	61.90	32.10	N43°35'20"W	60.82
C71	107°44'54"	25.00	47.01	34.25	N63°52'31"W	40.39
C72	37°34'18"	387.06	253.81	131.66	S28°47'13"E	249.29
C73	36°52'08"	337.06	112.35	56.81	S29°08'18"E	213.17

PLAT
 SHOWING LOTS 78-85, 147-158, 180-170, & 175-181
 SECTION TWO
"FENWICK HILLS"
 LOCATED IN THE STONEHOUSE DISTRICT OF
 JAMES CITY COUNTY,
 VIRGINIA
 JANUARY 9, 2004



SHEET 3 OF 3

