

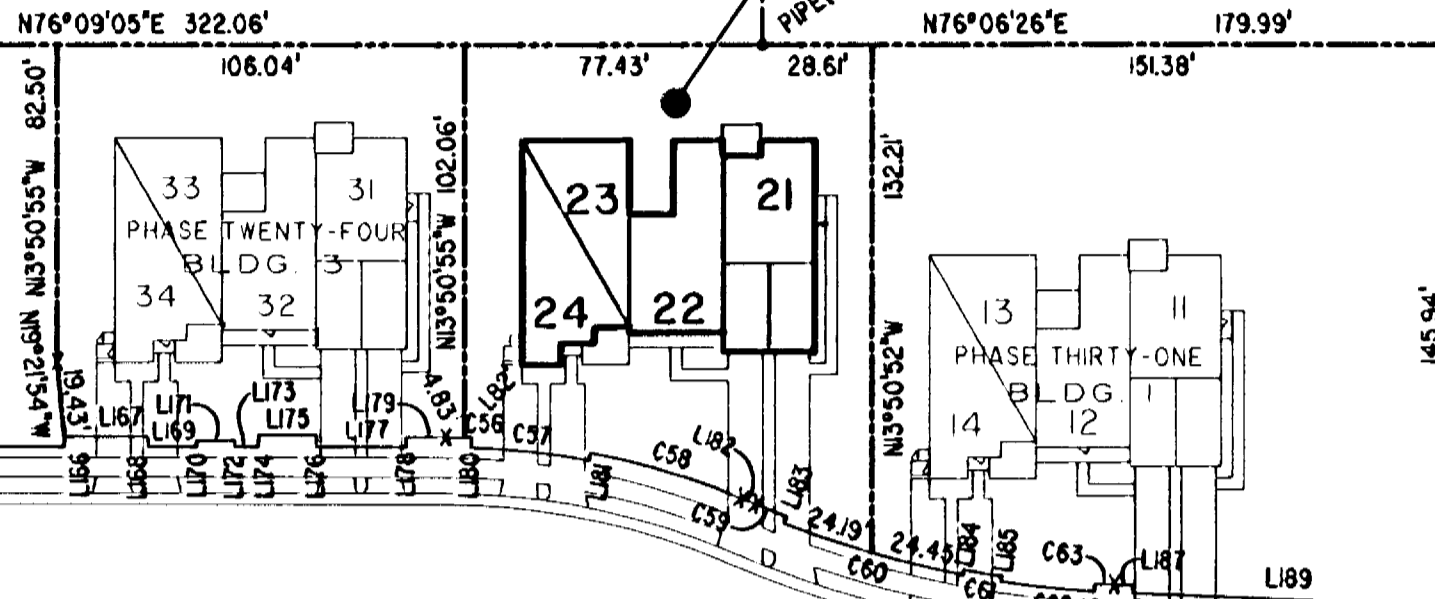
# #042308

JAMES CITY COUNTY TP 33-3-01-29  
NOW OR FORMERLY  
GARY E. & CATHY L. NESTER  
D.B.619 P.683

JAMES CITY COUNTY TP 33-3-01-24  
NOW OR FORMERLY  
GOLDEN KNIGHTS, INC.  
D.B.568 P.316

## PHASE THIRTY BUILDING 2 SEE DETAIL ON SHEET 1

MATCH LINE  
SEE SHEET 3



MARK II INVESTMENTS LTD.  
D.B.130 P.671

CLAIBORNE DRIVE  
VAR. WIDTH UTILITY & INGRESS/EGRESS ESMT.  
COMMON AREA

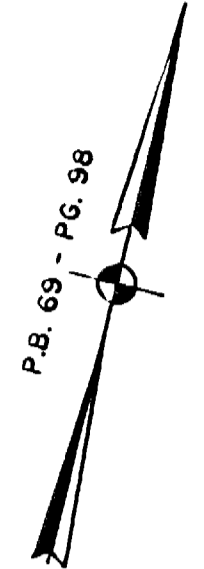
ADDITIONAL LAND

COMMON AREA - PHASE ONE

TP 282-04-00-001  
NOW OR FORMERLY  
CHELSEA GCA REALTY PARTNERSHIP, L.P.  
D.B.106 P.407

TP 282-05-00-001  
NOW OR FORMERLY  
CHELSEA GCA REALTY PARTNERSHIP, L.P.  
D.B.113 P.693

TP 282-08-00-001  
NOW OR FORMERLY  
752 L.L.C.  
INST. #980305



P.B. 69 - PG. 98

U.S. RTE. 60  
RICHMOND ROAD

P.B. 69 - PG. 98

S80°09'04"W 249.17' (OA)  
N09°50'57"W 7.13'  
S77°14'03"W 15.87'  
S77°14'03"W 150.89'

MATCH LINE  
SEE SHEET 3

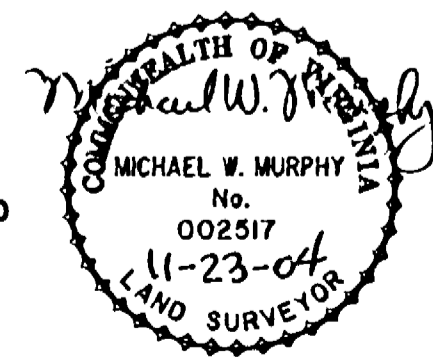
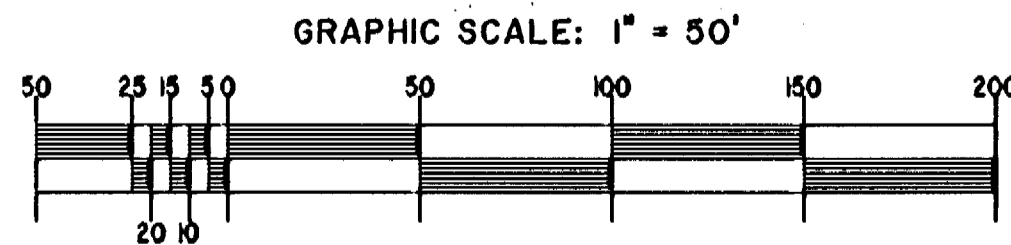
RAVEN TERRACE  
VAR. WIDTH UTILITY & INGRESS/EGRESS ESMT.  
COMMON AREA

DETAIL  
N.T.S.

City of Williamsburg & County of James City  
Circuit Court: This PLAT was recorded on  
20 December 2004  
at 11:01 AM/PM, P.B. PG. 98  
DOCUMENT # 042308  
BETSY B. WOOLRIDGE, CLERK  
Betsy B. Woolridge, Clerk

### EXHIBIT "A" CLAIBORNE (A CONDOMINIUM COMMUNITY) PHASE THIRTY

CITY OF WILLIAMSBURG, VIRGINIA



Hassell & Folkes, P.C. Engineers Surveyors Planners Chesapeake, VA 23320 (757) 547-9531	SIZE C	CONTRACT NO.	FILE NAME S:\PROJECTS\CLAIBORNE\PH-30-BLDG-2.DWG	REV.
SCALE: 1" = 50'		DATE: 10/29/04	SHEET 2 of 5	

A-1520

A-1520

projects\CLAIBORNE\CLAIBORNE\PH-30-BLDG-2.dwg