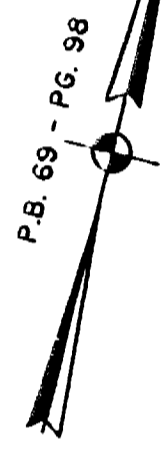
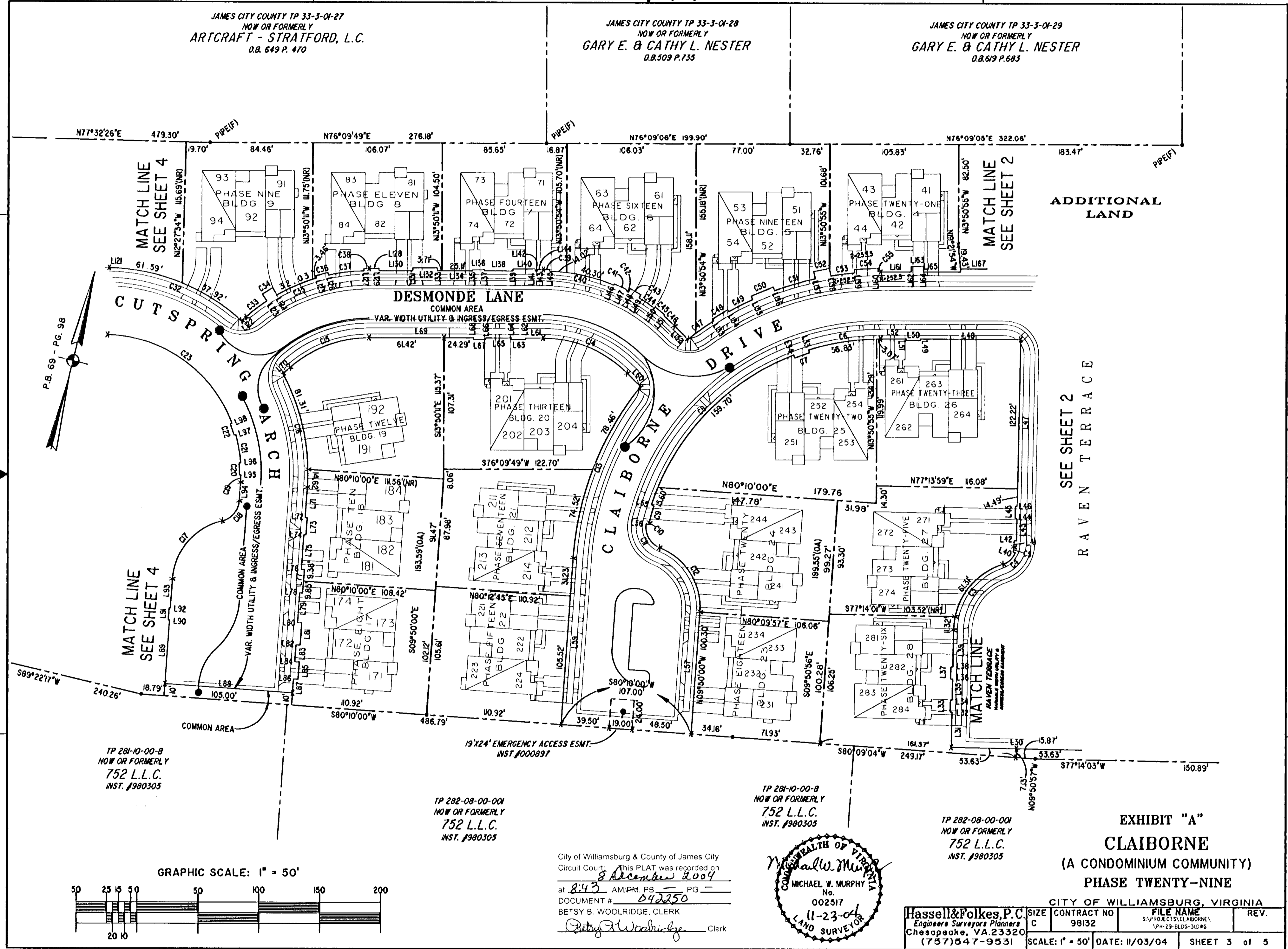


#042250

JAMES CITY COUNTY TP 33-3-01-27
NOW OR FORMERLY
ARTCRAFT - STRATFORD, L.C.
D.B. 649 P. 470

JAMES CITY COUNTY TP 33-3-01-28
NOW OR FORMERLY
GARY E. & CATHY L. NESTER
D.B. 509 P. 735

JAMES CITY COUNTY TP 33-3-01-29
NOW OR FORMERLY
GARY E. & CATHY L. NESTER
D.B. 619 P. 683



MATCH LINE
SEE SHEET 4

MATCH LINE
SEE SHEET 4

MATCH LINE
SEE SHEET 2

ADDITIONAL
LAND

SEE SHEET 2
RAVEN TERRACE

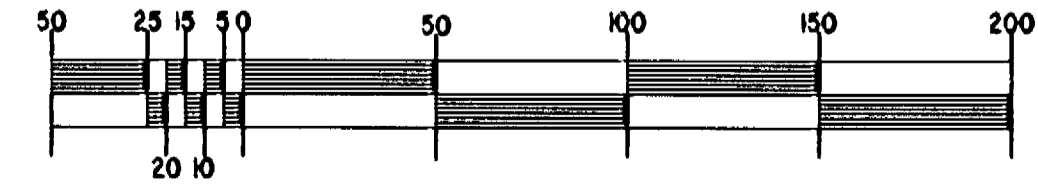
TP 281-10-00-B
NOW OR FORMERLY
752 L.L.C.
INST. #980305

TP 282-08-00-001
NOW OR FORMERLY
752 L.L.C.
INST. #980305

TP 281-10-00-B
NOW OR FORMERLY
752 L.L.C.
INST. #980305

TP 282-08-00-001
NOW OR FORMERLY
752 L.L.C.
INST. #980305

GRAPHIC SCALE: 1" = 50'



City of Williamsburg & County of James City
Circuit Court. This PLAT was recorded on
8 December 2004
at 8:43 AM, PM, PB PG —
DOCUMENT # 042250
BETSY B. WOOLRIDGE, CLERK
Betsy B. Woolridge Clerk

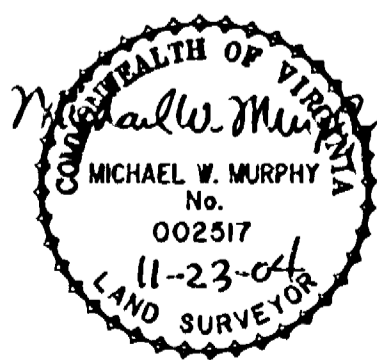


EXHIBIT "A"
CLAIBORNE
(A CONDOMINIUM COMMUNITY)
PHASE TWENTY-NINE

Hassell & Folkes, P.C. Engineers Surveyors Planners Chesapeake, VA. 23320 (757) 547-9531	SIZE	CONTRACT NO	FILE NAME	REV.
	C	98132	S:\PROJECTS\CLAIBORNE\PH-29-BLDG-31.DWG	
SCALE: 1" = 50'		DATE: 11/03/04	SHEET 3 of 5	

A-1520

A-1520