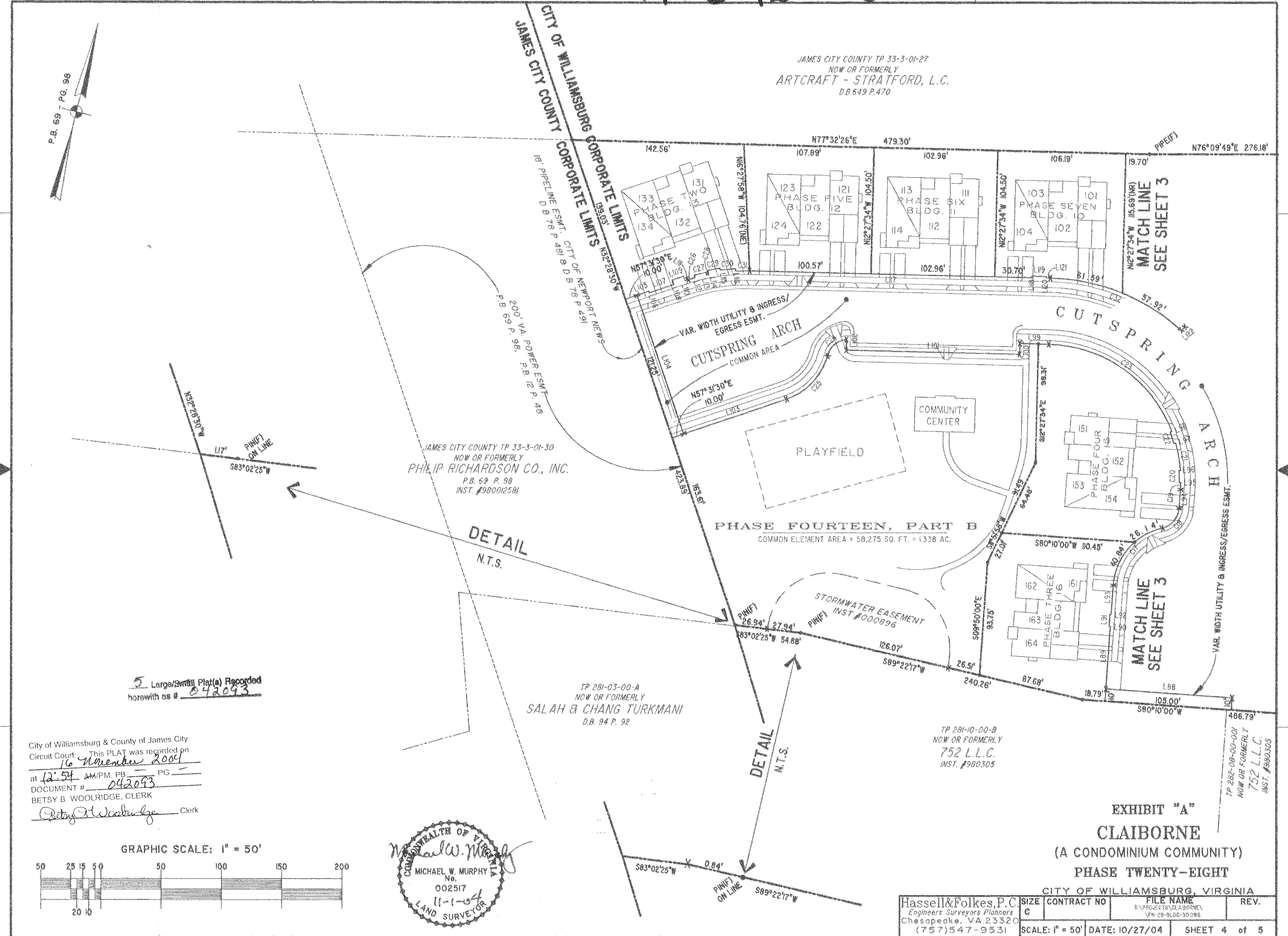
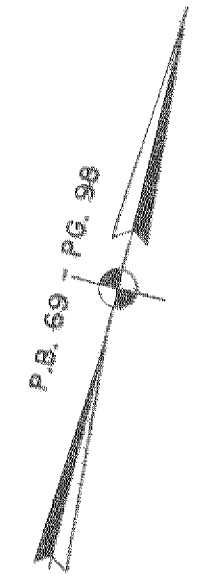


#042093

JAMES CITY COUNTY TP 33-3-01-27
NOW OR FORMERLY
ARTCRAFT - STRATFORD, L.C.
D.B. 649 P. 470

CITY OF WILLIAMSBURG CORPORATE LIMITS
JAMES CITY COUNTY CORPORATE LIMITS



JAMES CITY COUNTY TP 33-3-01-30
NOW OR FORMERLY
PHILIP RICHARDSON CO., INC.
P.B. 69 P. 98
INST. #980012581

TP 291-03-00-A
NOW OR FORMERLY
SALAH & CHANG TURKMANI
D.B. 94 P. 98

TP 281-10-00-B
NOW OR FORMERLY
752 L.L.C.
INST. #980305

TP 282-08-00-001
NOW OR FORMERLY
752 L.L.C.
INST. #980305

5 Large/Small Plat(s) Recorded
herewith as # 042093

City of Williamsburg & County of James City
Circuit Court: This PLAT was recorded on
16 November 2004
at 12:54 AM/PM, PB PG
DOCUMENT # 042093
BETSY B. WOOLRIDGE, CLERK
Betsy B. Woolridge Clerk

GRAPHIC SCALE: 1" = 50'

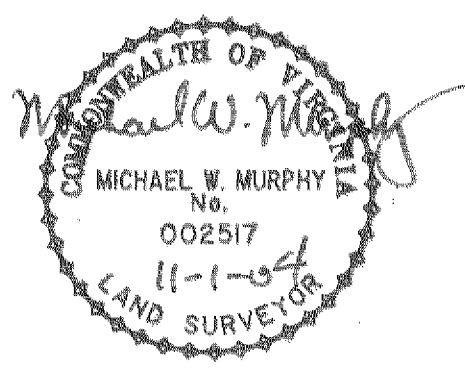
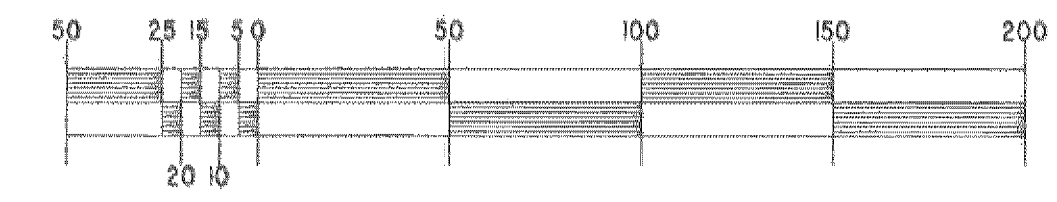


EXHIBIT "A"
CLAIBORNE
(A CONDOMINIUM COMMUNITY)
PHASE TWENTY-EIGHT
CITY OF WILLIAMSBURG, VIRGINIA

Hassell & Folkes, P.C. Engineers Surveyors Planners Chesapeake, VA 23320 (757) 547-9531	SIZE CONTRACT NO	FILE NAME S:\PROJECTS\CLAIBORNE\PH-28-9-DC-30.DWG	REV.
SCALE: 1" = 50'	DATE: 10/27/04	SHEET 4 of 5	

A-1520

A-1520

I:\Projects\CLAIBORNE\CLAIBORNE\PH-28-BLDG-30.DWG