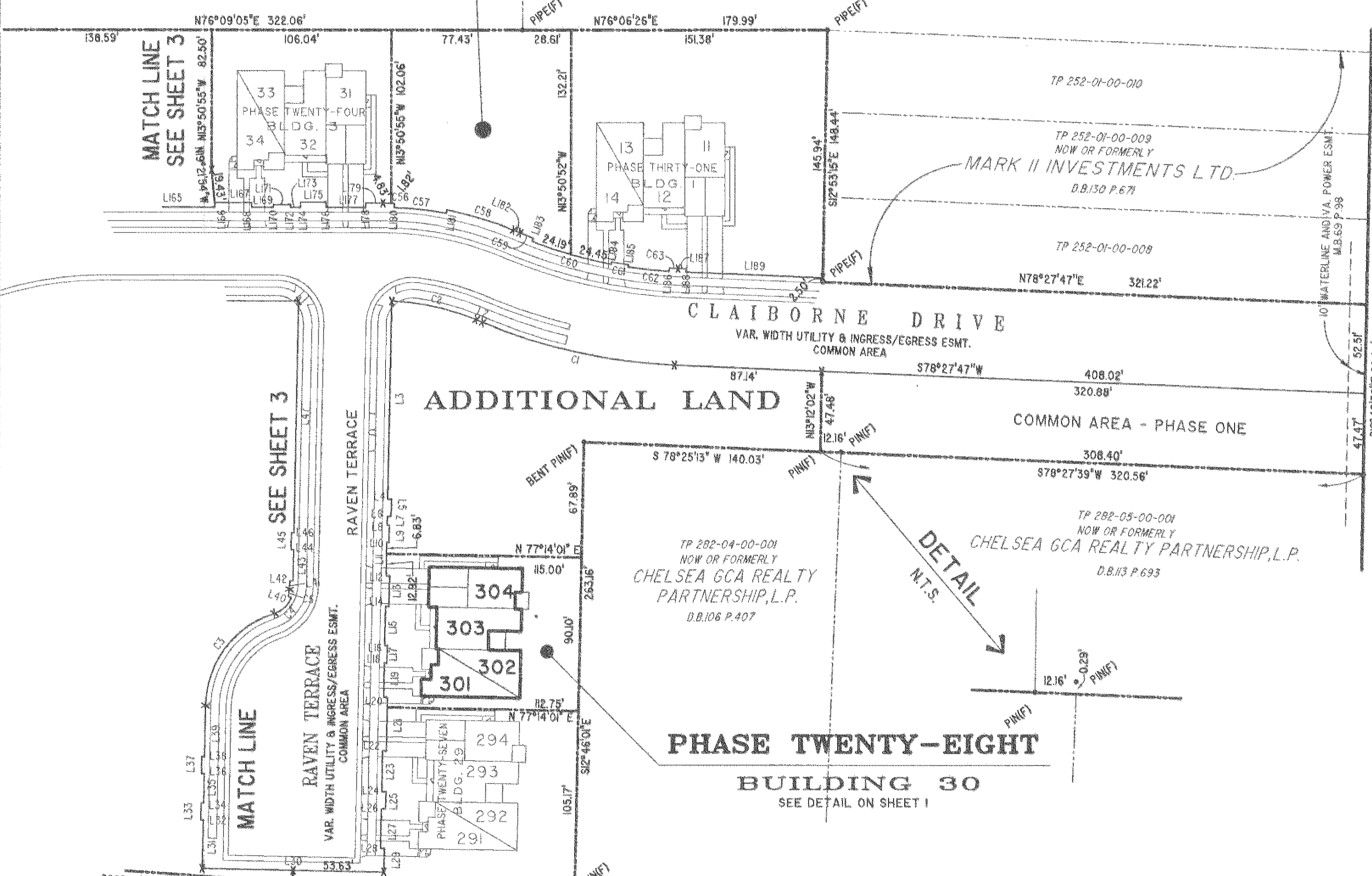
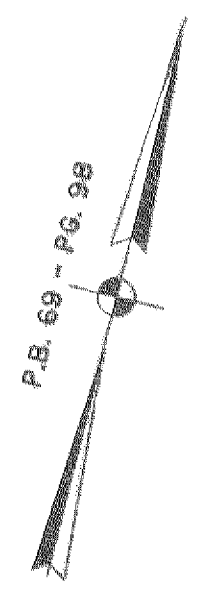


#042093

JAMES CITY COUNTY TP 33-3-01-29  
NOW OR FORMERLY  
GARY E. & CATHY L. NESTER  
D.B.619 P.693

JAMES CITY COUNTY TP 33-3-01-24  
NOW OR FORMERLY  
GOLDEN KNIGHTS, INC.  
D.B.568 P.318

ADDITIONAL LAND



U.S. RTE. 60  
RICHMOND ROAD

P.B. 69 - PG. 98

TP 282-04-00-001  
NOW OR FORMERLY  
CHELSEA GCA REALTY PARTNERSHIP, L.P.  
D.B.106 P.407

TP 252-01-00-009  
NOW OR FORMERLY  
MARK II INVESTMENTS LTD.  
D.B.130 P.671

TP 282-05-00-001  
NOW OR FORMERLY  
CHELSEA GCA REALTY PARTNERSHIP, L.P.  
D.B.113 P.693

TP 282-08-00-001  
NOW OR FORMERLY  
752 L.L.C.  
INST. #980305

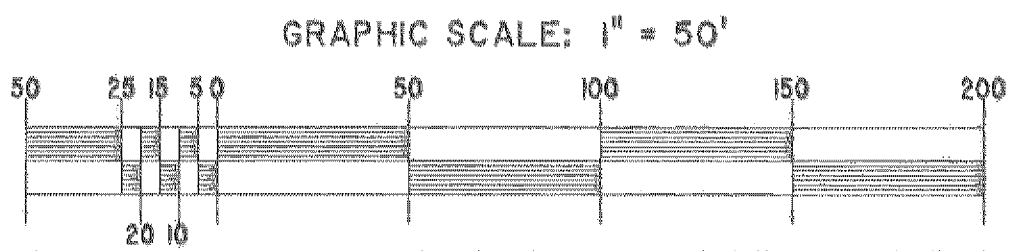
PHASE TWENTY-EIGHT  
BUILDING 30  
SEE DETAIL ON SHEET I

DETAIL  
N.T.S.

5 Large/Small Plat(s) Recorded  
herewith as # 042093

City of Williamsburg & County of James City  
Circuit Court: This PLAT was recorded on  
16 November 2004  
at 12:54 AM/PM PB PG  
DOCUMENT # 042093  
BETSY B. WOOLRIDGE, CLERK  
Betsy B. Woolridge Clerk

EXHIBIT "A"  
CLAIBORNE  
(A CONDOMINIUM COMMUNITY)  
PHASE TWENTY-EIGHT  
CITY OF WILLIAMSBURG, VIRGINIA



Hassell & Folkes, P.C. Engineers Surveyors Planners Chesapeake, VA 23320 (757) 547-9531	SIZE C	CONTRACT NO	FILE NAME S:\PROJECTS\CLABORNE\PH-28-BLDG-30.DWG	REV.
SCALE: 1" = 50'		DATE: 10/27/04	SHEET 2 of 5	

A-1520

A-1520

S:\Projects\CLABORNE\CLABORNE\PH-28-BLDG-30.dwg