

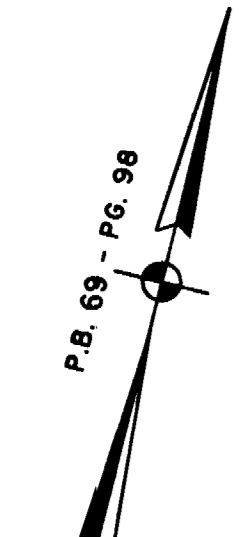
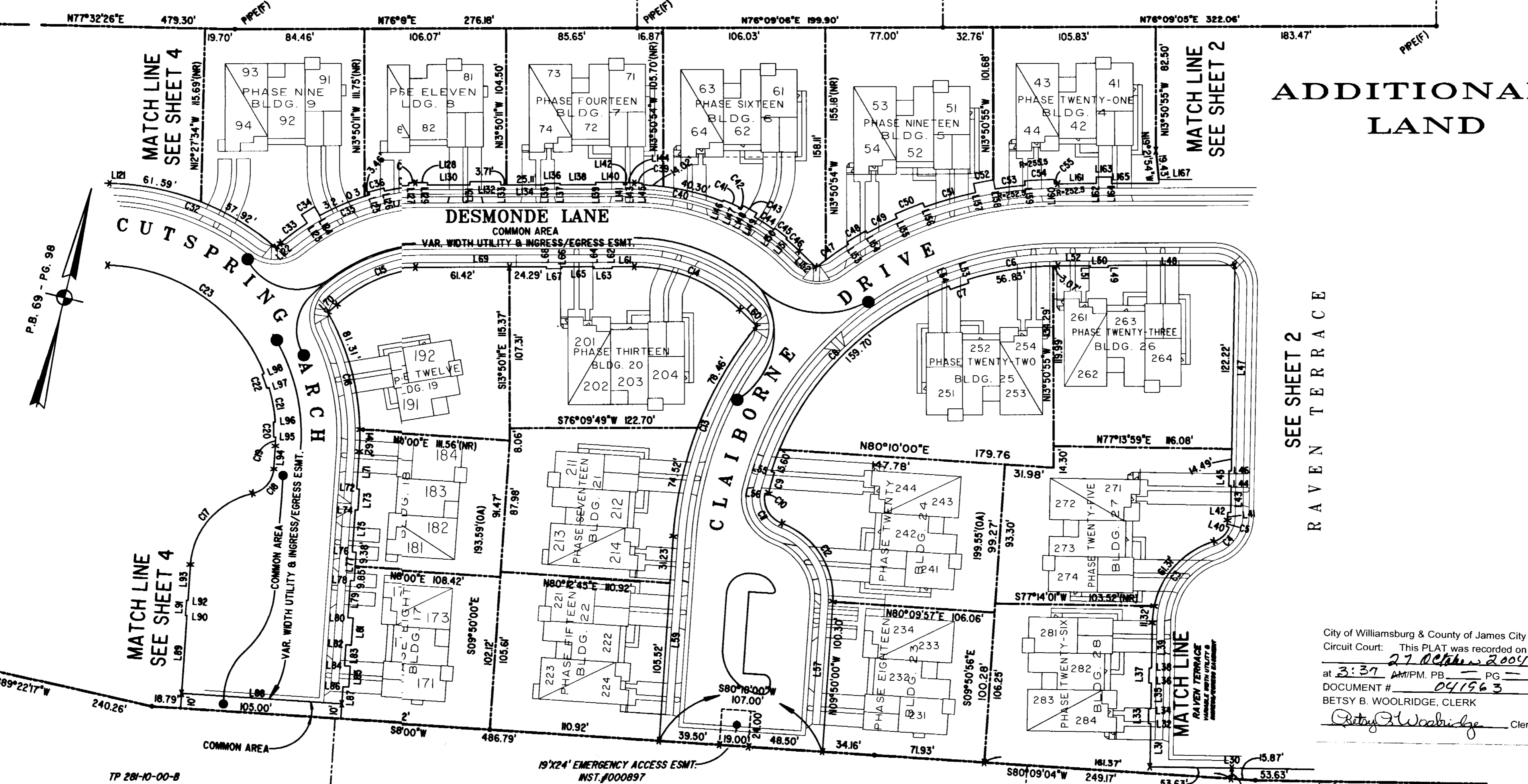
#041963

JAMES CITY COUNTY TP 33-3-01-27  
NOW OR FORMERLY  
ARTCRAFT - STRATFORD, S.  
D.B. 649 P. 470

JAMES CITY COUNTY TP 33-3-01-28  
NOW OR FORMERLY  
GARY E. & CATHY L. NESTER  
D.B. 509 P. 735

JAMES CITY COUNTY TP 33-3-01-29  
NOW OR FORMERLY  
GARY E. & CATHY L. NESTER  
D.B. 619 P. 683

ADDITIONAL  
LAND



MATCH LINE  
SEE SHEET 4

MATCH LINE  
SEE SHEET 2

MATCH LINE  
SEE SHEET 4

MATCH LINE  
SEE SHEET 2

SEE SHEET 2  
RAVEN TERRACE

City of Williamsburg & County of James City  
Circuit Court: This PLAT was recorded on  
27 October 2004  
at 3:39 AM/PM, PB PG  
DOCUMENT # 041963  
BETSY B. WOOLRIDGE, CLERK  
*Betsy B. Woolridge* Clerk

TP 281-10-00-B  
NOW OR FORMERLY  
752 L.L.C.  
INST. #980305

TP 282-08-00-001  
NOW OR FORMERLY  
752 L.L.C.  
INST. #980305

TP 281-10-00-B  
NOW OR FORMERLY  
752 L.L.C.  
INST. #980305

TP 282-08-00-001  
NOW OR FORMERLY  
752 L.L.C.  
INST. #980305

GRAPHIC SCALE: 1" = 50'

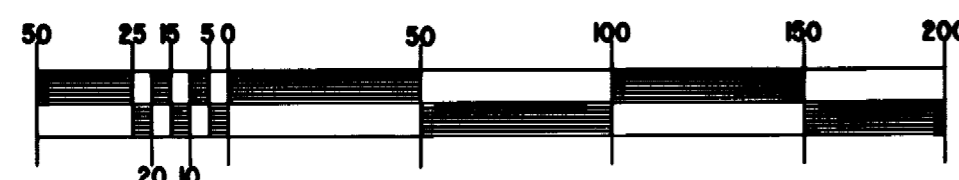


EXHIBIT "A"  
CLAIBORNE  
(A CONDOMINIUM COMMUNITY)  
PHASE TWENTY-SEVEN

Hassell & Folkes, P.C. Engineers Surveyors Planners Chesapeake, VA, 23320 (757) 547-9531	SCALE: 1" = 50'	DATE: 10/07/04	SHEET 3 of 5
---	-----------------	----------------	--------------

A-1520

A-1520