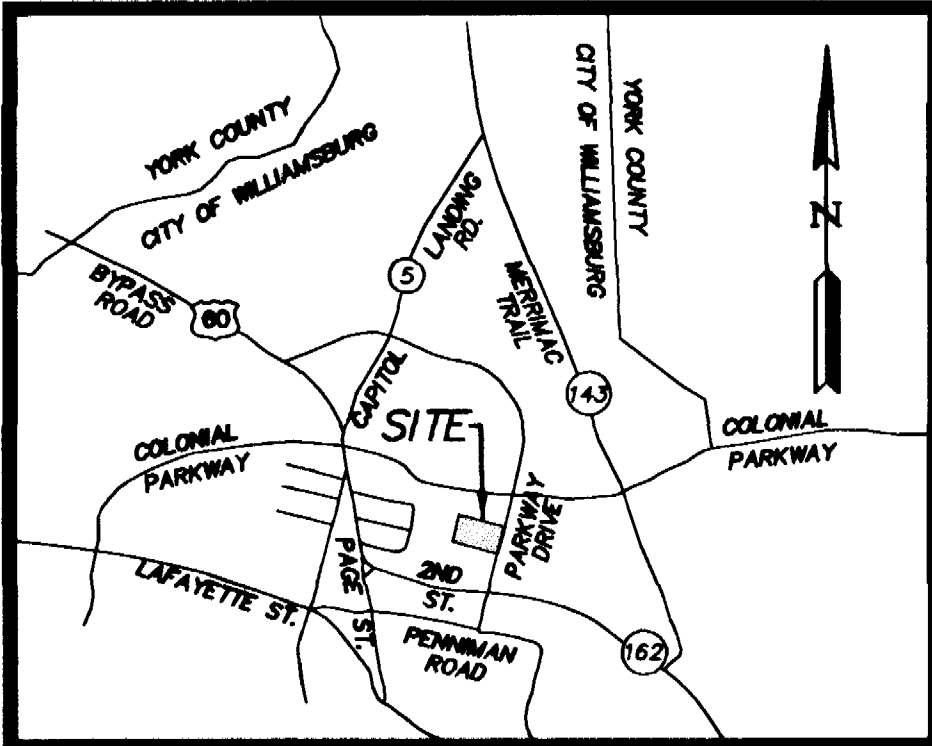
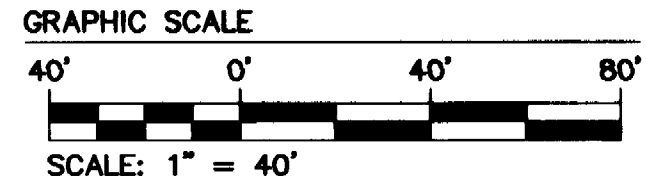
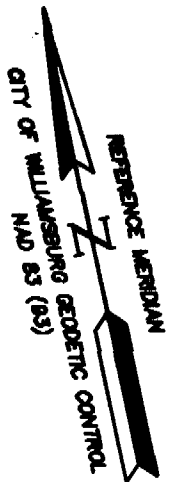


# #041755



**VICINITY MAP**  
SCALE 1"=2000'



N/F  
CITY OF WILLIAMSBURG  
DB 73, PG 177  
TAX PARCEL #438-08-31-015  
ZONED B-3

LOT 28  
TAX PARCEL  
#438-05-00-028

LOT 27  
TAX PARCEL  
#438-05-00-027

LOT 26  
TAX PARCEL  
#438-05-00-026

LOT 25  
TAX PARCEL  
#438-05-00-025

LOT 24  
TAX PARCEL  
#438-05-00-024

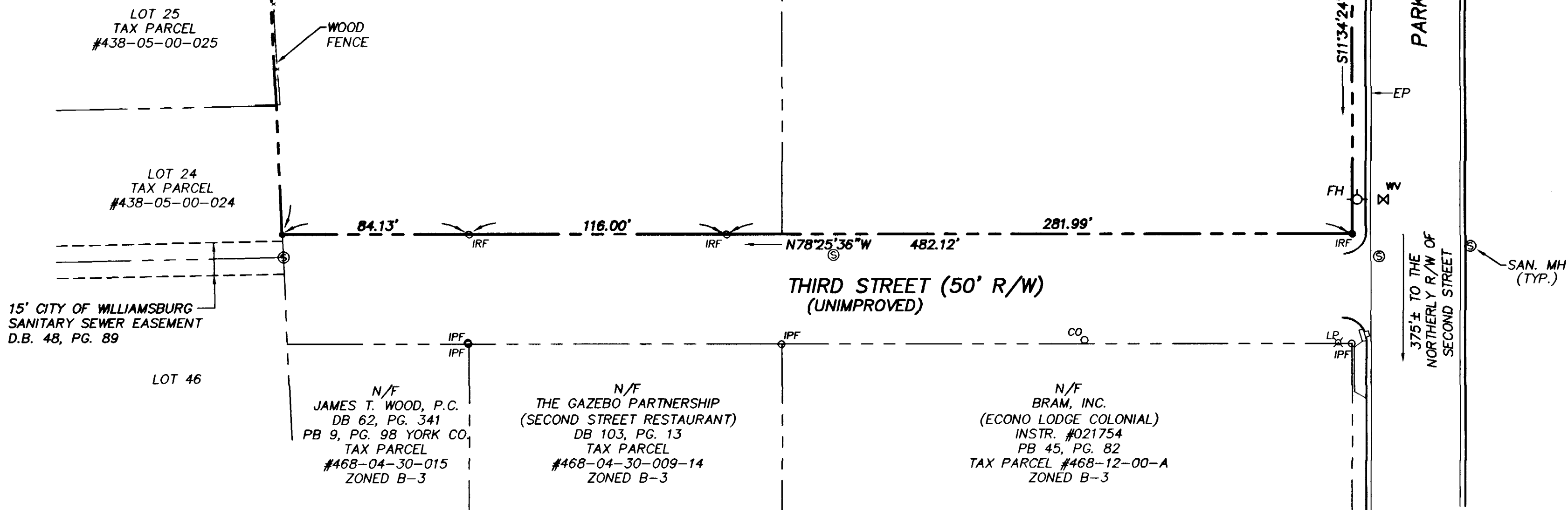
15' CITY OF WILLIAMSBURG  
SANITARY SEWER EASEMENT  
D.B. 48, PG. 89

LOT 46

**BROOKS LAND CORPORATION, ET ALS**  
**"EAST WILLIAMSBURG SUBDIVISION"**  
BLOCK 31  
300 THIRD STREET  
INSTR. NO. 97000037  
D.B. 58, PG. 478  
D.B. 73, PG. 177  
TAX PARCELS  
#438-08-31-015A AND  
#438-08-31-1 → 12  
ZONED RM-2

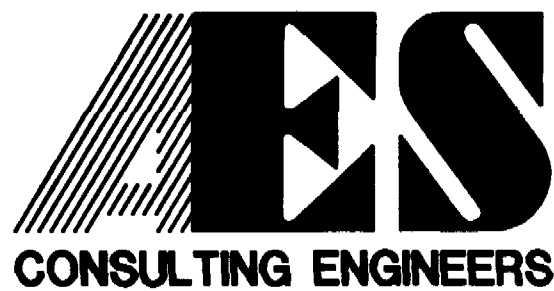
**BROOKS-HALL, ET ALS**  
**"EAST WILLIAMSBURG SUBDIVISION"**  
BLOCK 22  
222 PARKWAY DRIVE  
D.B. 73, PG. 177  
D.B. 71, PG. 545  
D.B. 58, PG. 478  
INSTR. NO. 97000037  
TAX PARCEL  
#438-08-22-001 → 12  
AND 17 → 28  
ZONED RM-2

TOTAL AREA  
145,936 S.F.±  
OR 3.350 AC.±



INDIVIDUAL LOT LINES,  
VACATED STREETS AND  
ALLEYS ARE NOT SHOWN

S:\Jobs\9297\02-BROOKS\dwg\Plats\929702P01.dwg 8/30/2004 2:13:12 PM EST



5248 Olde Towne Road, Suite 1  
Williamsburg, Virginia 23188  
(757) 253-0040  
Fax (757) 220-8994

PLAT OF SURVEY  
A PARCEL CONTAINING 3.350 ACRES±  
BEING A PORTION OF  
BLOCKS 22 AND 31  
"EAST WILLIAMSBURG SUBDIVISION"

CITY OF WILLIAMSBURG

VIRGINIA



City of Williamsburg & County of James City Circuit Court: This PLAT was recorded on 9-27-2004	
at 2:17 PM, PG. 11	PG. 11
DOCUMENT # 041755	
BETSY B. WOOLRIDGE, CLERK	
<i>Betsy B. Woolridge</i> Clerk	
No.	DATE
REVISION / COMMENT / NOTE	
BY	

Designed	Drawn
	JFS
Scale	Date
1"=40'	8/26/04
Project No.	
9297-2	
Drawing No.	
1 OF 1	