

#041692

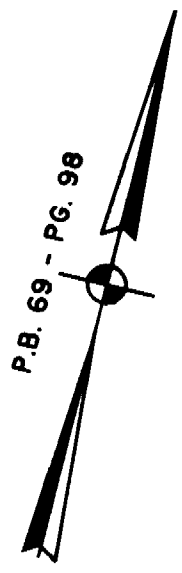
JAMES CITY COUNTY TP 33-3-01-29
NOW OR FORMERLY
GARY E. & CATHY L. NESTER
D.B.619 P.683

JAMES CITY COUNTY TP 33-3-01-24
NOW OR FORMERLY
GOLDEN KNIGHTS, INC.
D.B.568 P.316

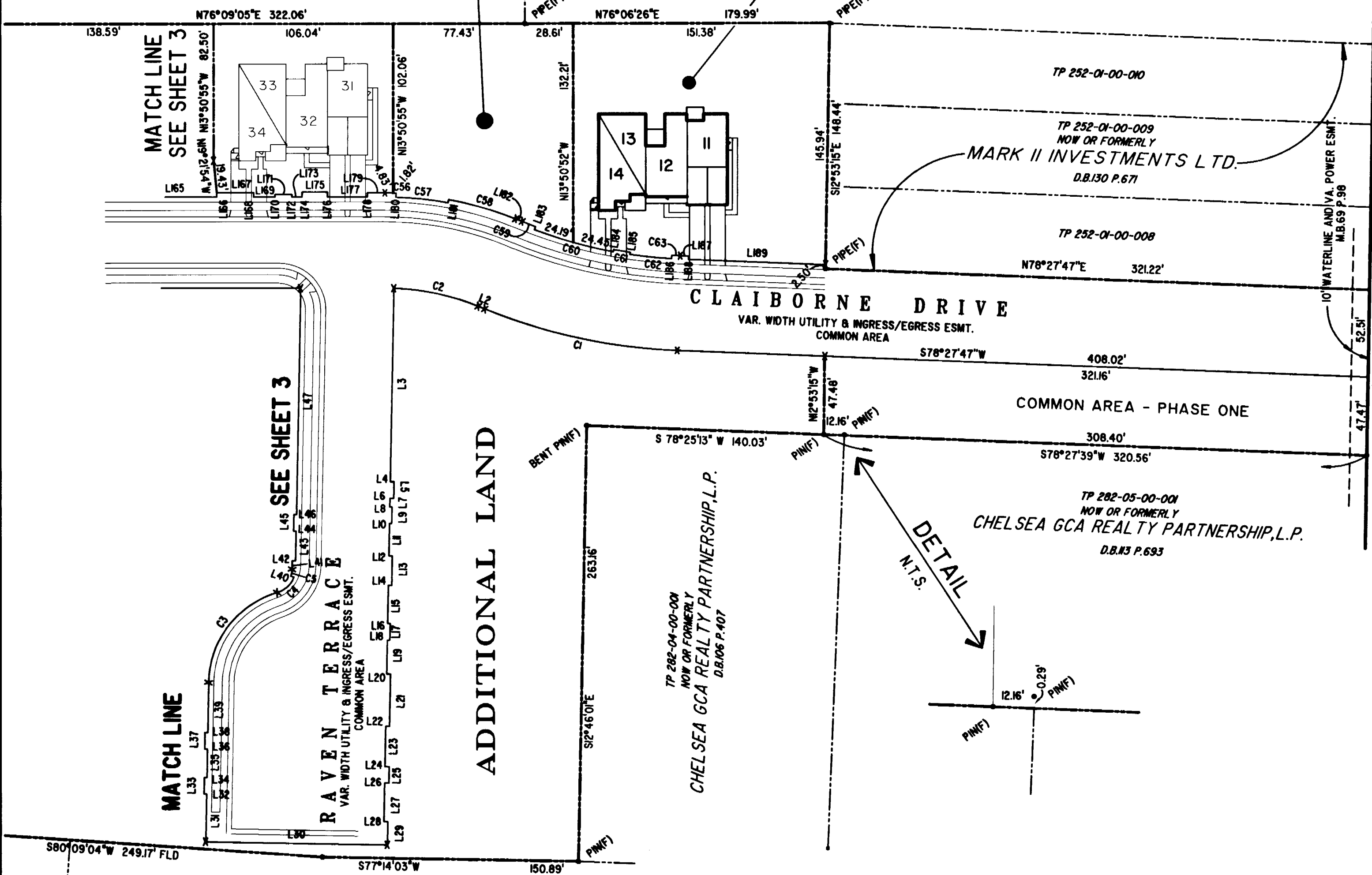
PHASE THIRTY-ONE

ADDITIONAL LAND

BUILDING 1
SEE DETAIL ON SHEET I



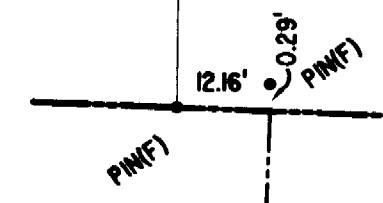
P.B. 69 - PG. 98



U.S. RTE. 60
RICHMOND ROAD
P.B. 69 - PG. 98

TP 282-05-00-001
NOW OR FORMERLY
CHELSEA GCA REALTY PARTNERSHIP, L.P.
D.B.813 P.693

DETAIL
N.T.S.



MATCH LINE
SEE SHEET 3
RAVEN TERRACE
VAR. WIDTH UTILITY & INGRESS/EGRESS ESMT.
COMMON AREA

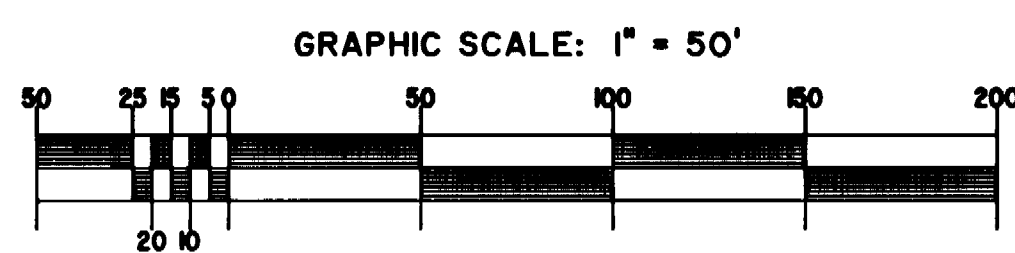
ADDITIONAL LAND

TP 282-04-00-001
NOW OR FORMERLY
CHELSEA GCA REALTY PARTNERSHIP, L.P.
D.B.806 P.407

TP 282-08-00-001
NOW OR FORMERLY
752 L.L.C.
INST. #980305

City of Williamsburg & County of James City
Circuit Court: This PLAT was recorded on
9-17-2004
at 2:02 PM, PG. 98
DOCUMENT # 041692
BETSY B. WOOLRIDGE, CLERK
Betsy B. Woolridge Clerk

EXHIBIT "A"
CLAIBORNE
(A CONDOMINIUM COMMUNITY)
PHASE THIRTY-ONE



Hassell & Folkes, P.C. Engineers Surveyors Planners Chesapeake, VA 23320 (757) 547-9531	SIZE C	CONTRACT NO.	FILE NAME S:\PROJECTS\CLAIBORNE\ VPH-31-BLDG-1.DWG	REV.
SCALE: 1" = 50'		DATE: 08/30/04	SHEET 2 of 5	