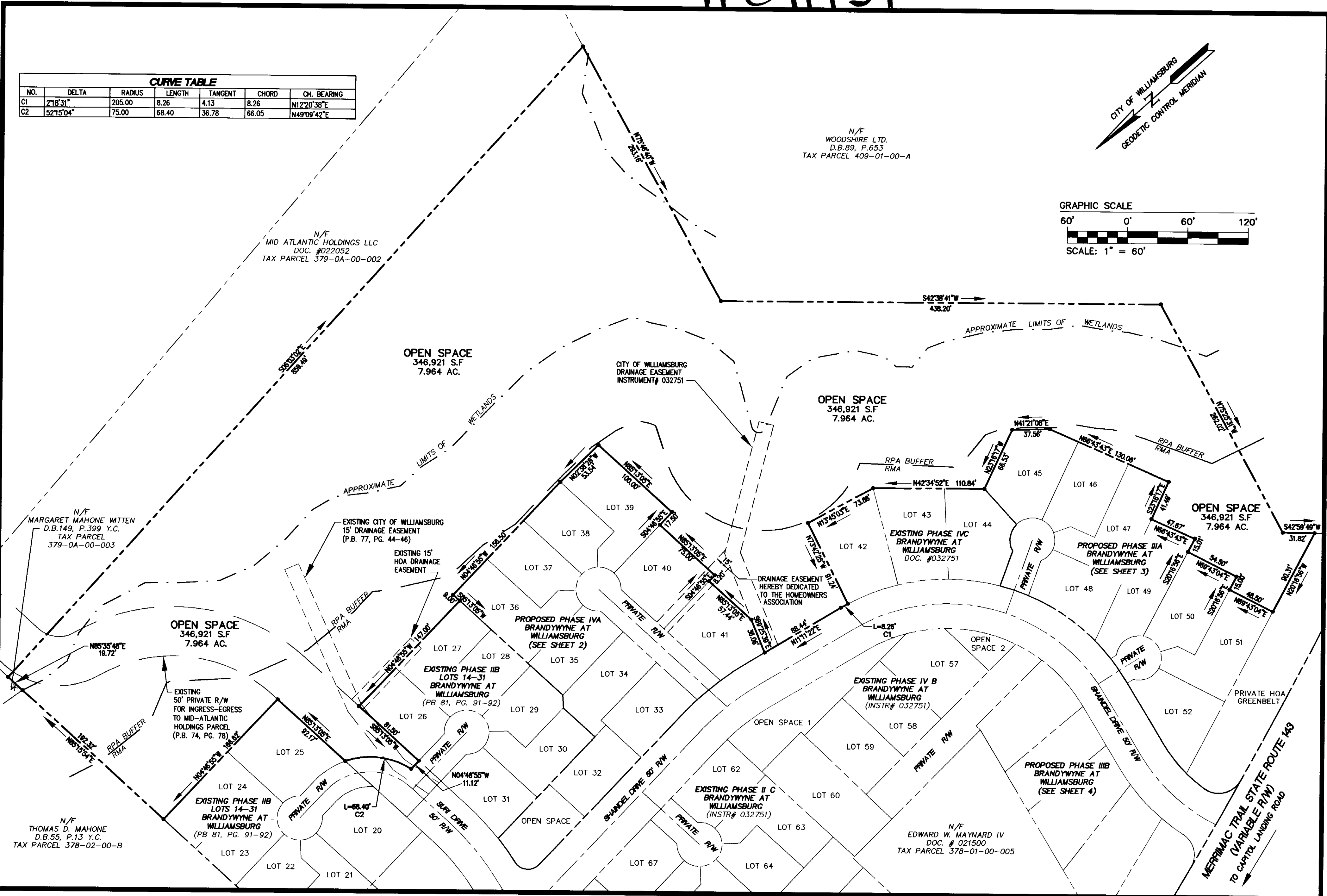
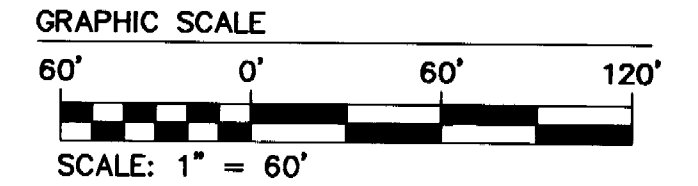
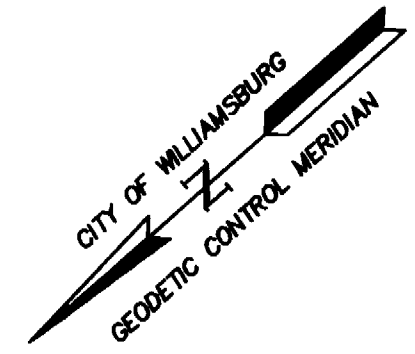
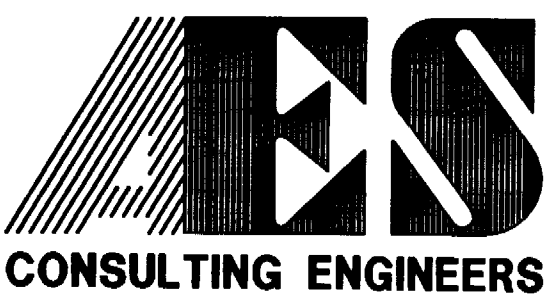


#041437

CURVE TABLE						
NO.	DELTA	RADIUS	LENGTH	TANGENT	CHORD	CH. BEARING
C1	2°18'31"	205.00	8.26	4.13	8.26	N12°20'38"E
C2	52°15'04"	75.00	68.40	36.78	66.05	N49°09'42"E



S:\Jobs\8453\04-Brandywyne Ph 3-4\DWG\Plats\PH2C3A4B4C\6453A4A3A8P5.dwg 7/8/2004 3:23:40 PM EST



5248 Olde Towne Road, Suite 1
Williamsburg, Virginia 23188
(757) 253-0040
Fax (757) 220-8994

PLAT OF SUBDIVISION
**BRANDYWYNE
AT WILLIAMSBURG**
PHASE I V A, LOTS 32-41, PHASE III A, LOTS 45-52
AND PHASE III B, LOTS 53-56
OWNER/DEVELOPER: CONDOR PROPERTIES AT WILLIAMSBURG, L.L.C.
CITY OF WILLIAMSBURG VIRGINIA



No.	DATE	REVISION / COMMENT / NOTE	BY

Designed HWP	Drawn JFS
Scale 1"=60'	Date 7/7/04
Project No. 8453-04	
Drawing No. 5 of 5	

City of Williamsburg & County of James City
Circuit Court: This PLAT was recorded on
8-12-2004
at 2:58 PM, PG 1
DOCUMENT # 041437
BETSY B. WOOLRIDGE, CLERK
Betsy B. Woolridge Clerk