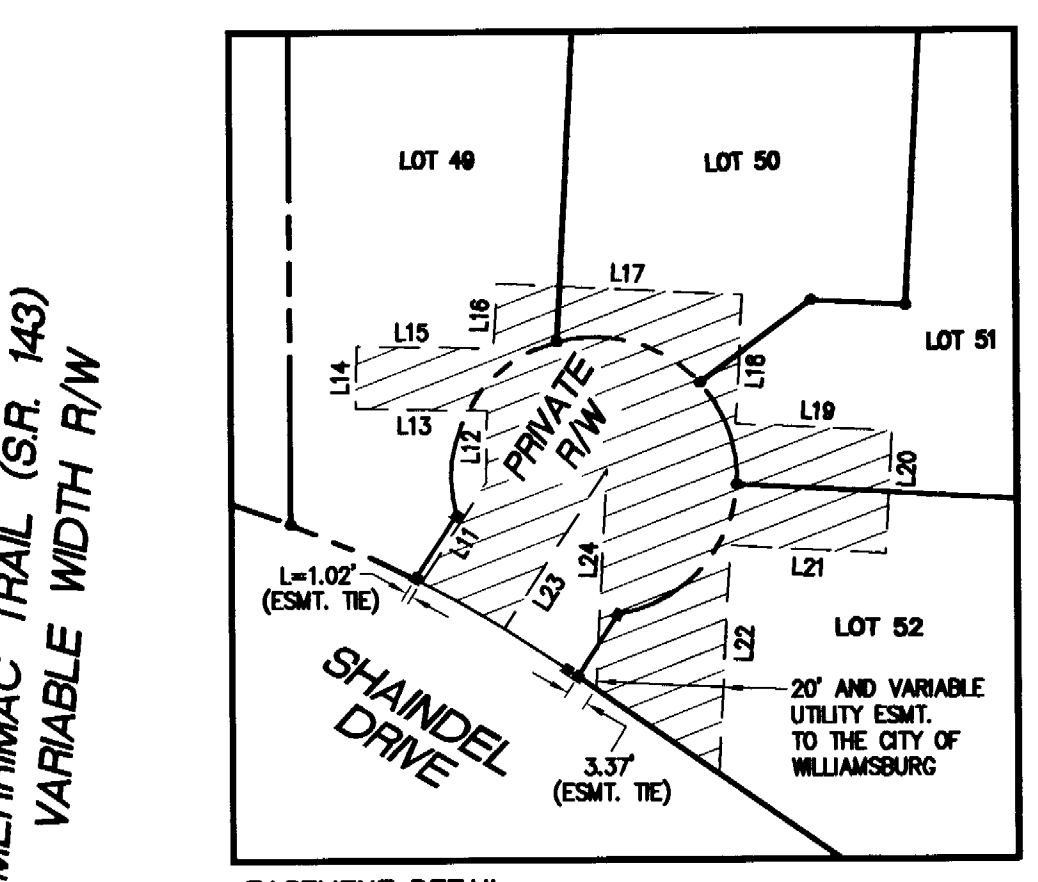
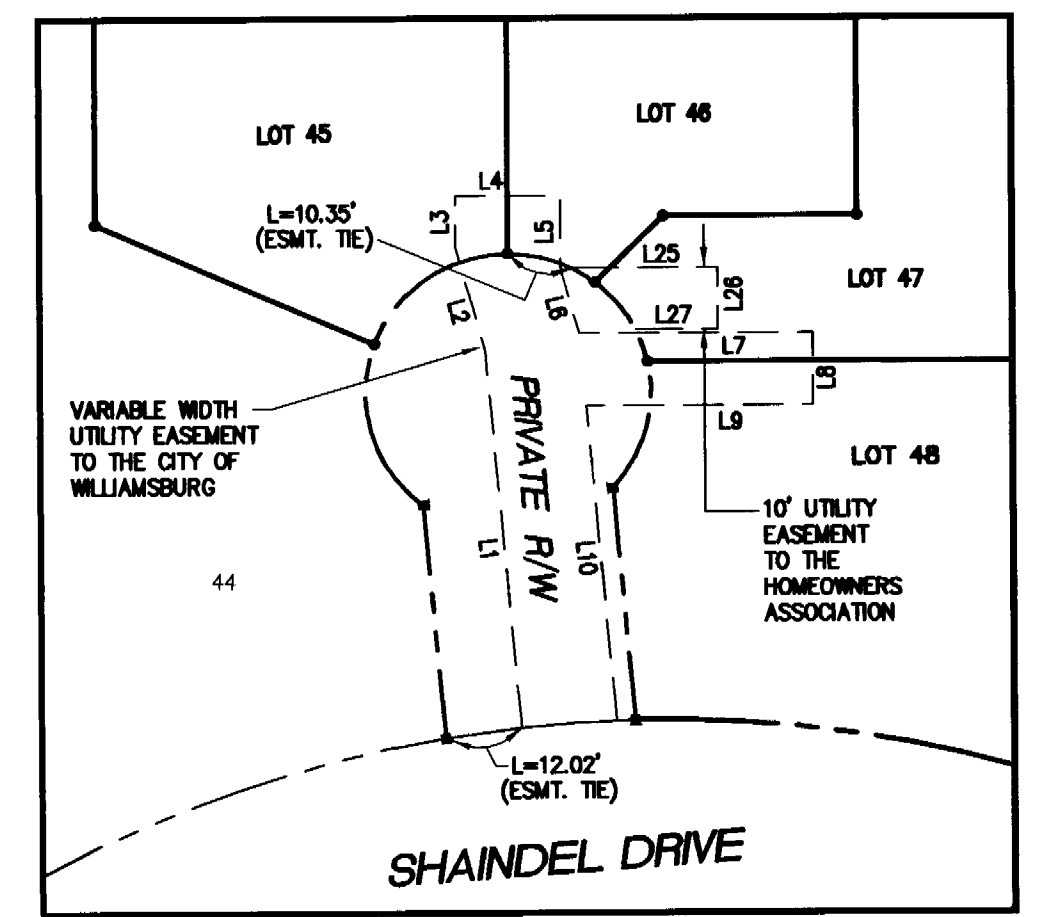
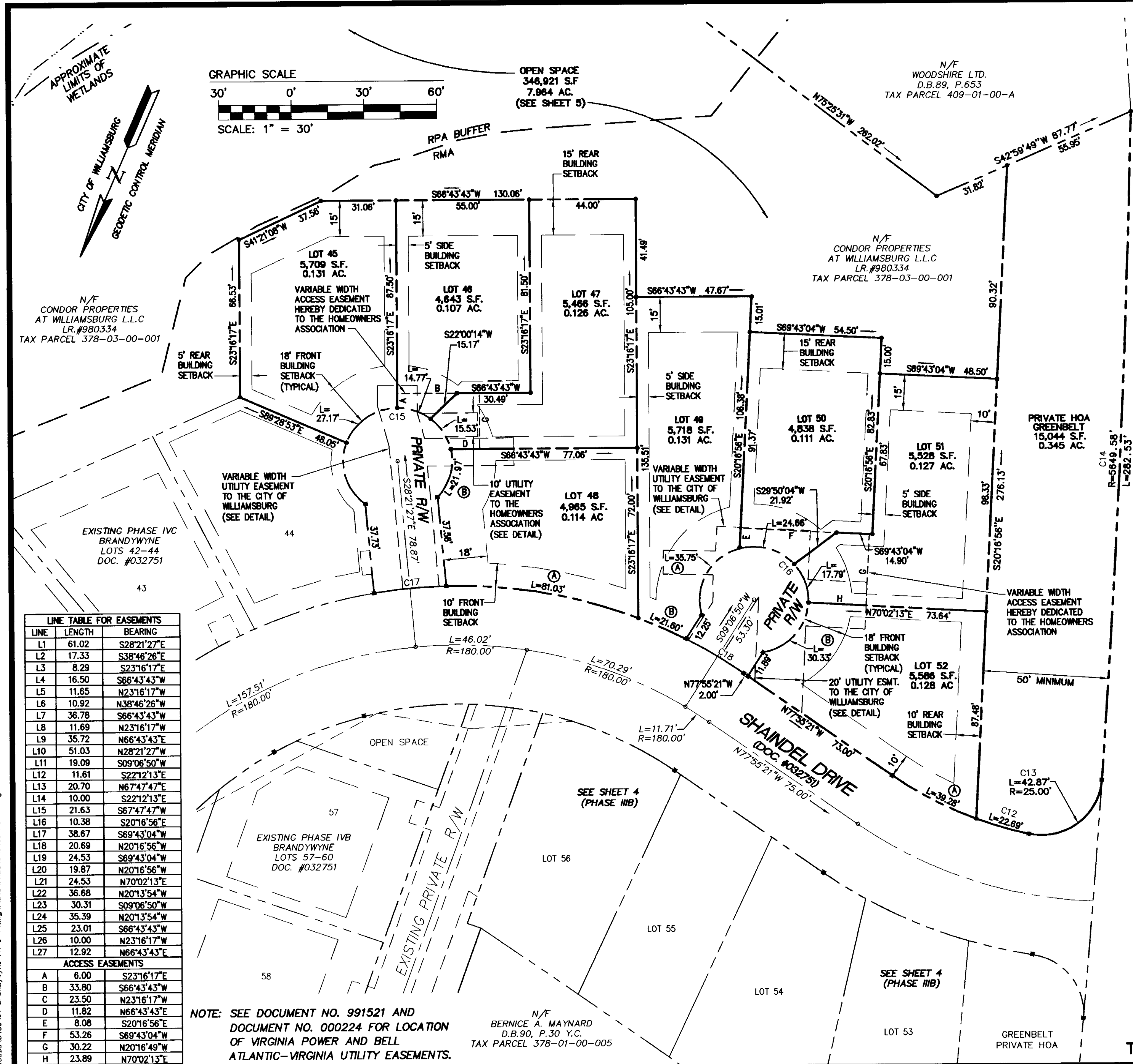


#041437



LINE TABLE FOR EASEMENTS

LINE	LENGTH	BEARING
L1	61.02	S28°21'27"E
L2	17.33	S38°46'26"E
L3	8.29	S23°16'17"E
L4	16.50	S66°43'43"W
L5	11.65	N23°16'17"W
L6	10.92	N38°46'26"W
L7	36.78	S66°43'43"W
L8	11.69	N23°16'17"W
L9	35.72	N66°43'43"E
L10	51.03	N28°21'27"W
L11	19.09	S09°06'50"W
L12	11.61	S22°12'13"E
L13	20.70	N67°47'47"E
L14	10.00	S22°12'13"E
L15	21.63	S67°47'47"W
L16	10.38	S20°16'56"E
L17	38.67	S69°43'04"W
L18	20.69	N20°16'56"W
L19	24.53	S69°43'04"W
L20	19.87	N20°16'56"W
L21	24.53	N70°02'13"E
L22	36.68	N20°13'54"W
L23	30.31	S09°06'50"W
L24	35.39	N20°13'54"W
L25	23.01	S66°43'43"W
L26	10.00	N23°16'17"W
L27	12.92	N66°43'43"E

ACCESS EASEMENTS

LINE	LENGTH	BEARING
A	6.00	S23°16'17"E
B	33.80	S66°43'43"W
C	23.50	N23°16'17"W
D	11.82	N66°43'43"E
E	8.08	S20°16'56"E
F	53.26	S69°43'04"W
G	30.22	N20°16'49"W
H	23.89	N70°02'13"E

NOTE: SEE DOCUMENT NO. 991521 AND DOCUMENT NO. 000224 FOR LOCATION OF VIRGINIA POWER AND BELL ATLANTIC-VIRGINIA UTILITY EASEMENTS.

LOT CURVE TABLE

NO.	DELTA	RADIUS	LENGTH	TANGENT	CHORD	CH. BEARING
LOT 45	69°11'27"	22.50	27.17	15.52	25.55	N32°08'00"E
LOT 46	37°36'47"	22.50	14.77	7.66	14.51	N85°32'06"E
LOT 47	39°32'51"	22.50	15.53	8.09	15.22	S55°53'05"E
LOT 48 (A)	55°56'35"	22.50	21.97	11.95	21.11	S08°08'21"E
LOT 48 (B)	22°38'48"	205.00	81.03	41.05	80.50	N76°52'59"E
LOT 49 (A)	6°02'16"	205.00	21.60	10.81	21.59	S88°46'29"E
LOT 49 (B)	91°01'30"	22.50	35.75	22.91	32.10	N06°26'12"E
LOT 50	62°47'08"	22.50	24.66	13.73	23.44	N83°20'31"E
LOT 51	45°18'08"	22.50	17.79	9.39	17.33	S42°36'51"E
LOT 52 (A)	77°16'00"	22.50	30.34	17.98	28.10	S18°40'13"W
LOT 52 (B)	14°31'07"	155.00	39.28	19.74	39.17	S85°10'54"E

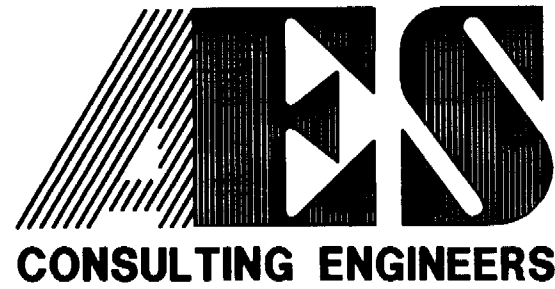
OPEN SPACE CURVE TABLE

LINE	DELTA	RADIUS	LENGTH	TANGENT	CHORD	CH. BEARING
C12	8°23'25"	155.00	22.69	11.37	22.68	N83°21'50"E
C13	98°15'11"	25.00	42.87	28.89	37.81	N30°02'33"E
C14	2°51'55"	5649.58	282.53	141.30	282.50	N20°31'02"W

RIGHT OF WAY CURVE TABLE

LINE	DELTA	RADIUS	LENGTH	TANGENT	CHORD	CH. BEARING
C15	276°22'46"	22.50	108.53	—	30.00	N61°38'33"E
C16	276°22'46"	22.50	108.53	—	30.00	S80°53'10"E
C17	8°23'32"	205.00	30.03	15.04	30.00	N61°21'49"E
C18	7°50'00"	205.00	28.03	14.04	28.01	S81°50'21"E

THIS SHEET ADDRESSES: PHASE III A, LOTS 45-52



5248 Olde Towne Road, Suite 1  
Williamsburg, Virginia 23188  
(757) 253-0040  
Fax (757) 220-8994

PLAT OF SUBDIVISION  
BRANDYWYNE  
AT WILLIAMSBURG  
PHASE IV A, LOTS 32-41, PHASE III A, LOTS 45-52  
AND PHASE III B, LOTS 53-56  
OWNER/DEVELOPER: CONDOR PROPERTIES AT WILLIAMSBURG, L.L.C.  
CITY OF WILLIAMSBURG VIRGINIA



No.	DATE	REVISION / COMMENT / NOTE	BY

Designed HWP	Drawn JFS
Scale 1"=30'	Date 7/7/04
Project No. 8453-04	
Drawing No. 3 of 5	