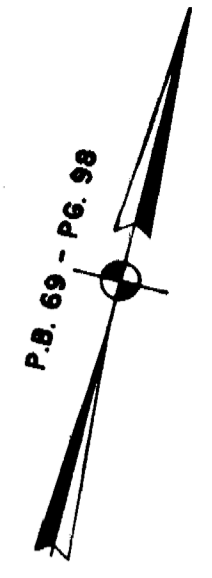


#040710



P.B. 69 - PG. 98

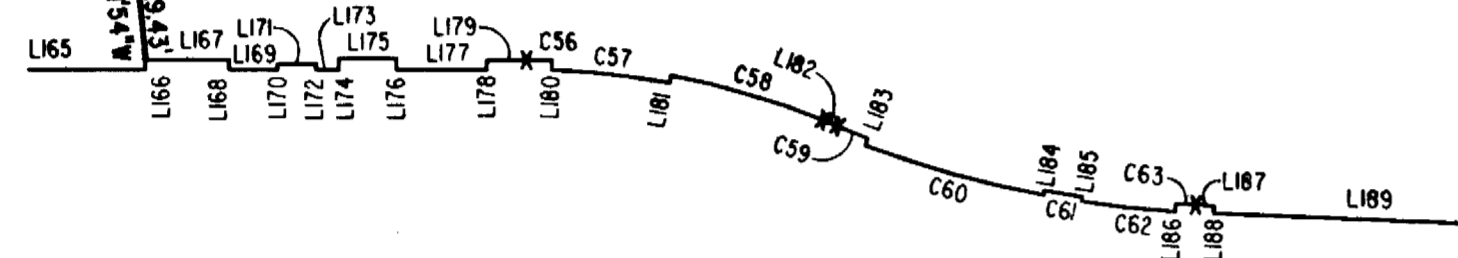
JAMES CITY COUNTY TP 33-3-01-29
NOW OR FORMERLY
GARY E. & CATHY L. NESTER
D.B. 619 P. 683

JAMES CITY COUNTY TP 33-3-01-24
NOW OR FORMERLY
GOLDEN KNIGHTS, INC.
D.B. 568 P. 316

N76°09'05"E 322.06' 183.47' 179.99'

ADDITIONAL LAND

MATCH LINE
SEE SHEET 3



TP 252-01-00-010

TP 252-01-00-009
NOW OR FORMERLY
MARK II INVESTMENTS LTD.
D.B. 130 P. 671

TP 252-01-00-008

CLAIBORNE DRIVE
VAR. WIDTH UTILITY & INGRESS/EGRESS ESMT.
COMMON AREA

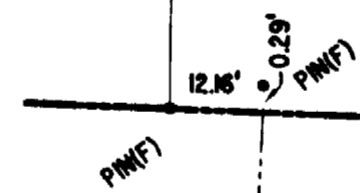
S78°27'47"W 408.02'

COMMON AREA - PHASE ONE

S78°27'39"W 320.56'

TP 282-05-00-001
NOW OR FORMERLY
CHELSEA GCA REALTY PARTNERSHIP, L.P.
D.B. 113 P. 693

DETAIL
N.T.S.

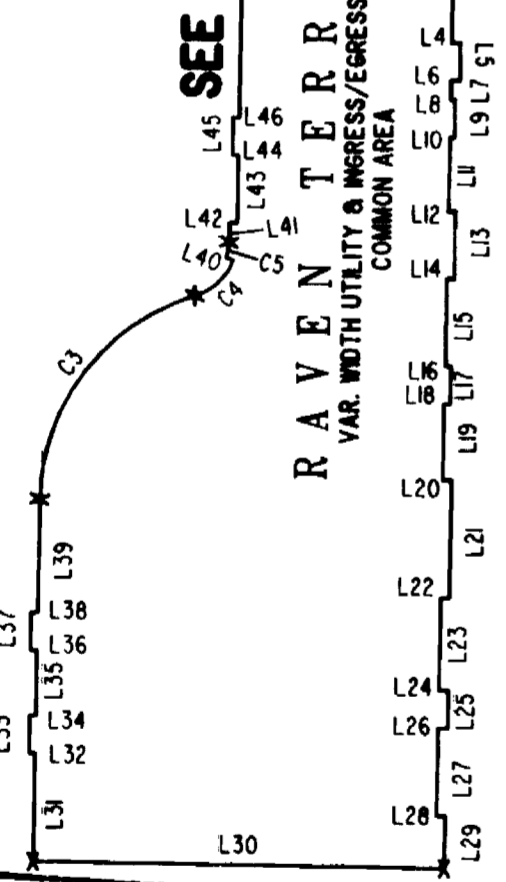


SEE SHEET 3

RAVEN TERRACE
VAR. WIDTH UTILITY & INGRESS/EGRESS ESMT.
COMMON AREA

ADDITIONAL LAND

MATCH LINE
SEE SHEET 3



TP 282-04-00-001
NOW OR FORMERLY
CHELSEA GCA REALTY PARTNERSHIP, L.P.
D.B. 106 P. 407

TP 282-08-00-001
NOW OR FORMERLY
752 L.L.C.
INST. #990305

City of Williamsburg & County of James City
Circuit Court: This PLAT was recorded on
4-20-2004
at 3:20 AM/PM, P.B. PG
DOCUMENT # 040710
BETSY B. WOOLRIDGE, CLERK
Betsy B. Woolridge Clerk

GRAPHIC SCALE: 1" = 50'

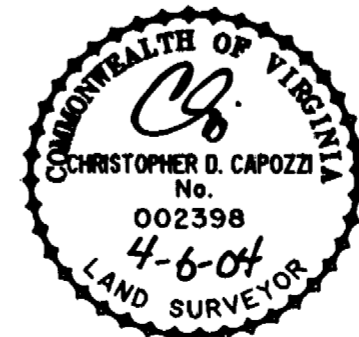
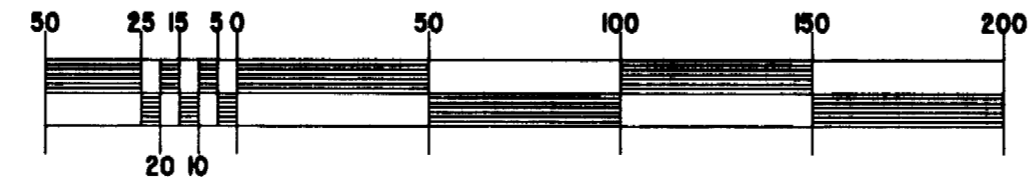


EXHIBIT "A"
CLAIBORNE
(A CONDOMINIUM COMMUNITY)
PHASE TWENTY-ONE

CITY OF WILLIAMSBURG, VIRGINIA		FILE NAME	REV.
Hassell & Folkes, P.C. Engineers Surveyors Planners Chesapeake, VA. 23320 (757) 547-9531	CONTRACT NO	S:\PROJECTS\CLAI\BORNEN\PH21-BLOC-4.DWG	
SCALE: 1" = 50'	DATE: 04/06/04	SHEET 2 of 5	

A-1520

A-1520