

JAMES CITY COUNTY TP 33-3-01-27
 NOW OR FORMERLY
 ARTCRAFT - STRATFORD, L.C.
 D.B. 649 P. 470

JAMES CITY COUNTY TP 33-3-01-28
 NOW OR FORMERLY
 GARY E. & CATHY L. NESTER
 D.B. 509 P. 735

JAMES CITY COUNTY TP 33-3-01-29
 NOW OR FORMERLY
 GARY E. & CATHY L. NESTER
 D.B. 619 P. 683

PHASE NINETEEN

BUILDING 5
 SEE DETAIL ON SHEET 1

ADDITIONAL LAND

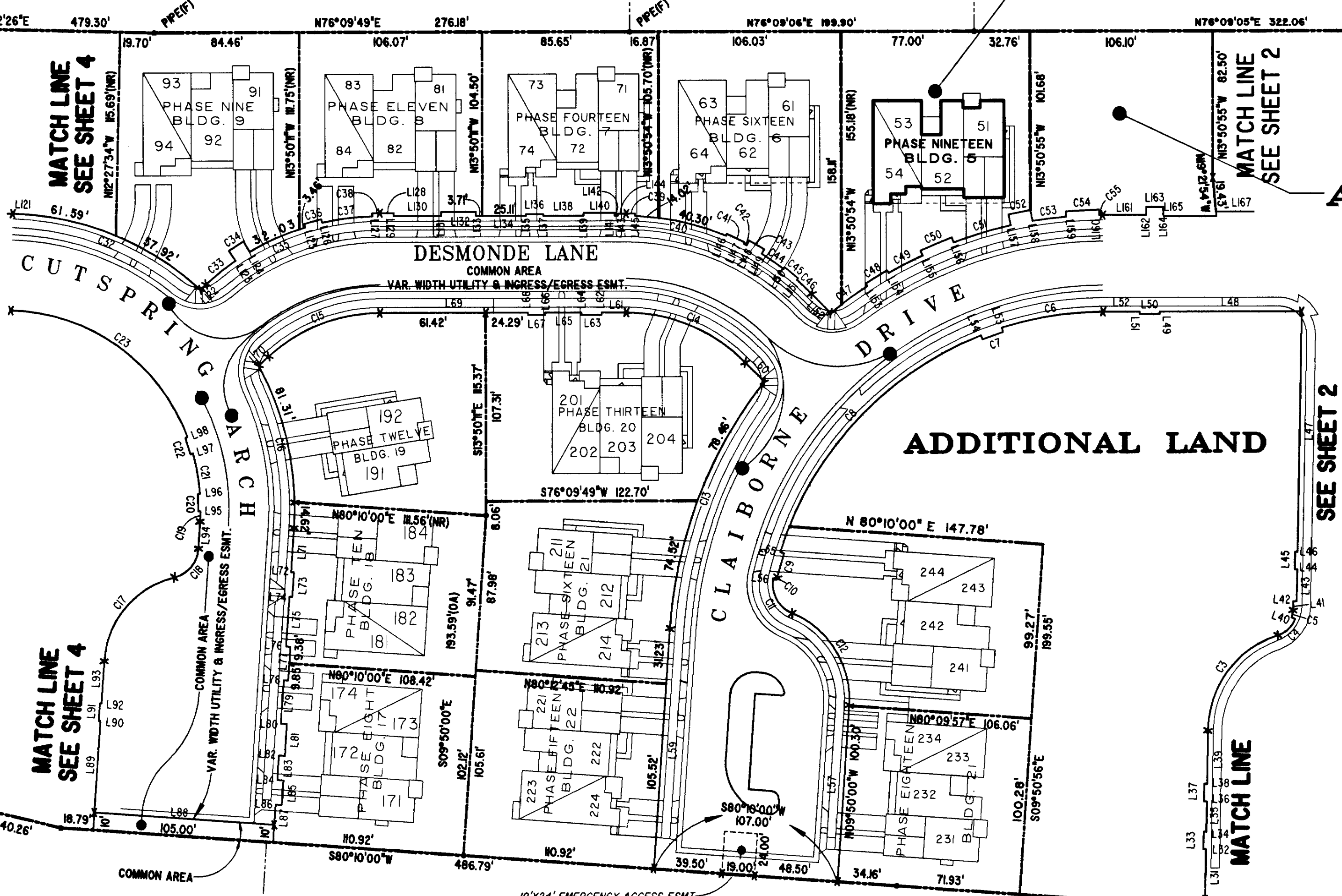
ADDITIONAL LAND

SEE SHEET 2
 RAVEN TERRACE

MATCH LINE
 SEE SHEET 4

MATCH LINE
 SEE SHEET 4

MATCH LINE
 SEE SHEET 2



City of Williamsburg & County of James City
 Circuit Court: This PLAT was recorded on
 19 February 2004
 at 3:28 AM/PM. PB. PG.
 DOCUMENT # 040344
 BETSY B. WOOLRIDGE, CLERK
 Betsy B. Woolridge Clerk

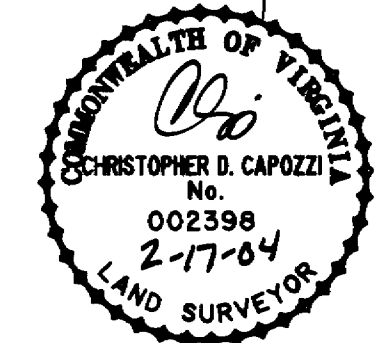
EXHIBIT "A"
CLAIBORNE
 (A CONDOMINIUM COMMUNITY)
PHASE NINETEEN

TP 282-08-00-001
 NOW OR FORMERLY
 752 L.L.C.
 INST. #980305

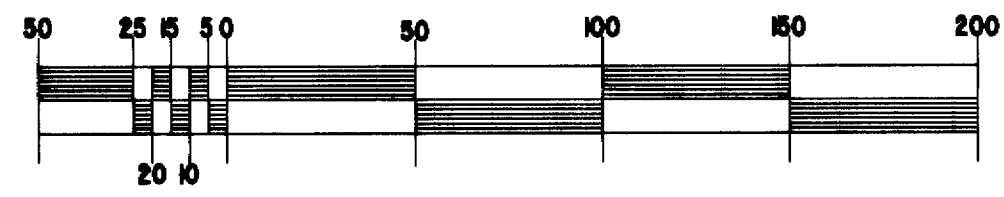
TP 281-10-00-B
 NOW OR FORMERLY
 752 L.L.C.
 INST. #980305

TP 282-08-00-001
 NOW OR FORMERLY
 752 L.L.C.
 INST. #980305

TP 281-10-00-B
 NOW OR FORMERLY
 752 L.L.C.
 INST. #980305



GRAPHIC SCALE: 1" = 50'



A-1520

A-1520

| | | | | | |
|---|--|----------------|-------------|---|------|
| Hassell & Folkes, P.C. Engineers Surveyors Planners Chesapeake, VA. 23320 (757) 547-9531 | | SIZE C | CONTRACT NO | FILE NAME S:\PROJECTS\CLAIBORNE\ PH-19-BLDG-5.DWG | REV. |
| SCALE: 1" = 50' | | DATE: 02/16/04 | | SHEET 3 of 5 | |

Projects\CLAIBORNE\CLAIBORNE\PH-19--BLDG-5.dwg, 02/16/2004 01:38:07 PM, HP DesignJet 600 (E,AD) by HP (temporary).pc3