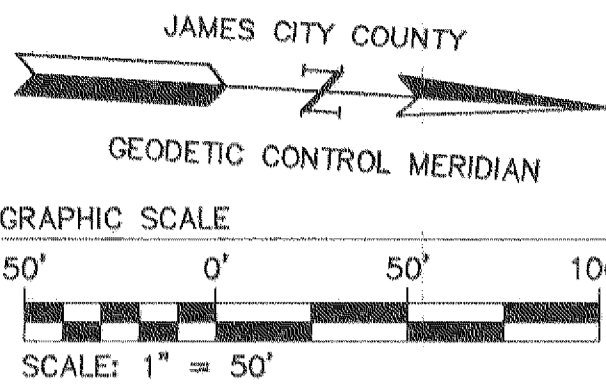


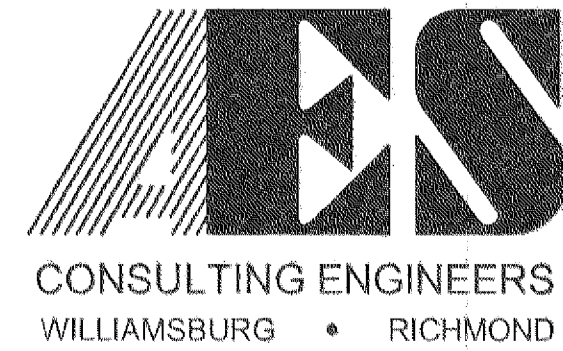
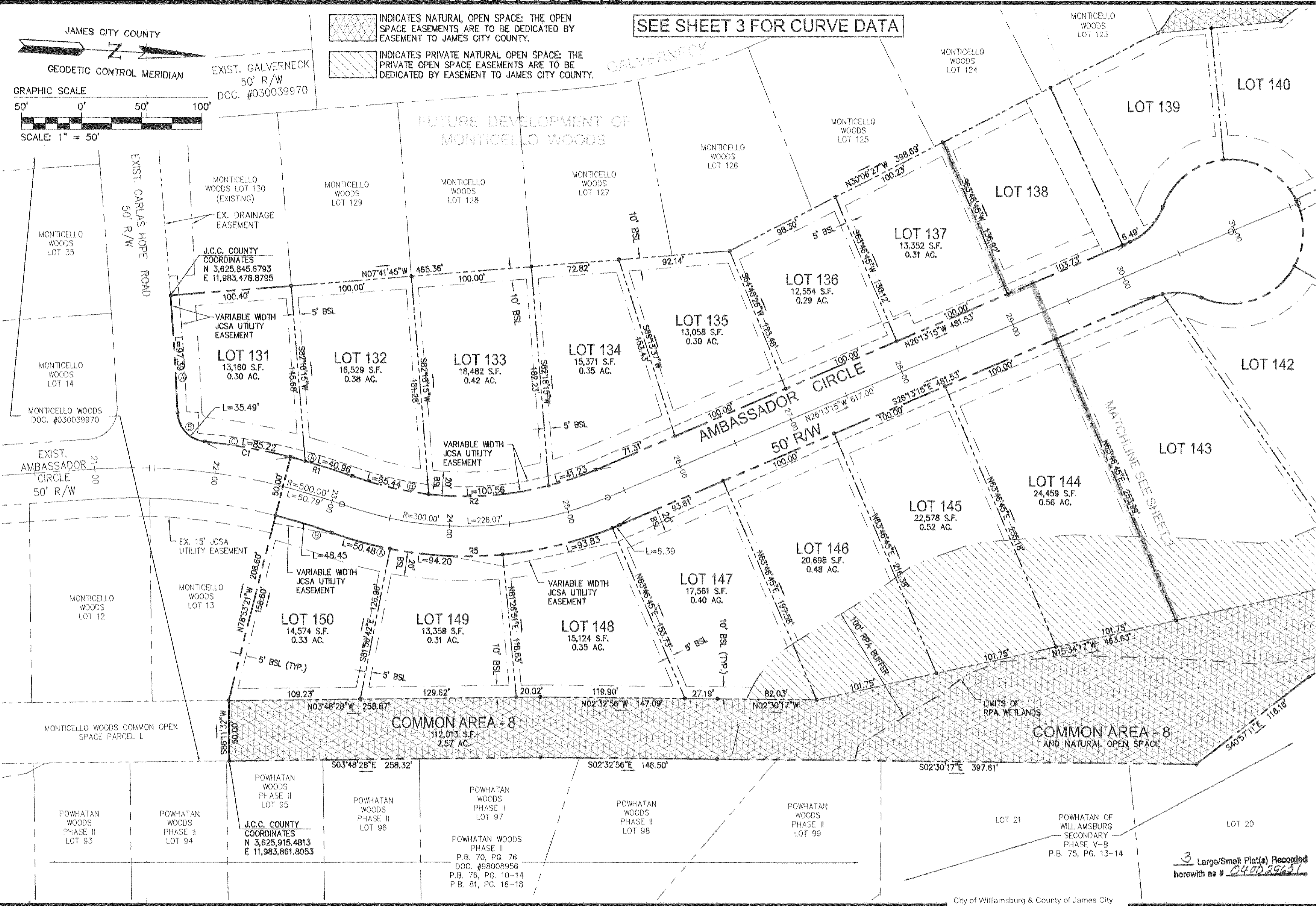
#040029651

SEE SHEET 3 FOR CURVE DATA



INDICATES NATURAL OPEN SPACE: THE OPEN SPACE EASEMENTS ARE TO BE DEDICATED BY EASEMENT TO JAMES CITY COUNTY.

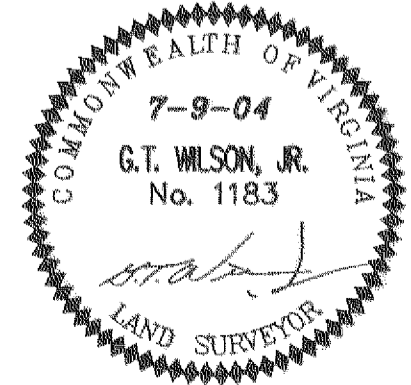
INDICATES PRIVATE NATURAL OPEN SPACE: THE PRIVATE OPEN SPACE EASEMENTS ARE TO BE DEDICATED BY EASEMENT TO JAMES CITY COUNTY.



5248 Old Towne Road, Suite 1
Williamsburg, Virginia 23188
(757) 253-0040
Fax (757) 220-8994

PLAT OF SUBDIVISION
MONTICELLO WOODS
PHASE II, LOTS 131-150
OWNED BY: POWHATAN CROSSING, INC.

BERKELEY DISTRICT JAMES CITY COUNTY VIRGINIA



City of Williamsburg & County of James City Circuit Court		This PLAT was recorded on	
at 12:52 AM		13 November 2004	
DOCUMENT #		040029651	
BETSY B. WOOLRIDGE, CLERK		Betsy B. Woolridge, Clerk	
No.	DATE	REVISION / COMMENT / NOTE	BY
2	11/2/04	REVISED PER COUNTY COMMENT LETTER DATED 10/26/04	VMB
1	7/9/04	REVISED PER CLIENT'S COMMENTS (NO CHANGE THIS SHEET)	BY

Designed	Drawn
VMB/JAG	AWT
Scale	Date
1"=50'	7/2/04
Project No.	
8130-6	
Drawing No.	
2 OF 3	

3 Large/Small Plat(s) Recorded herewith as # 040029651