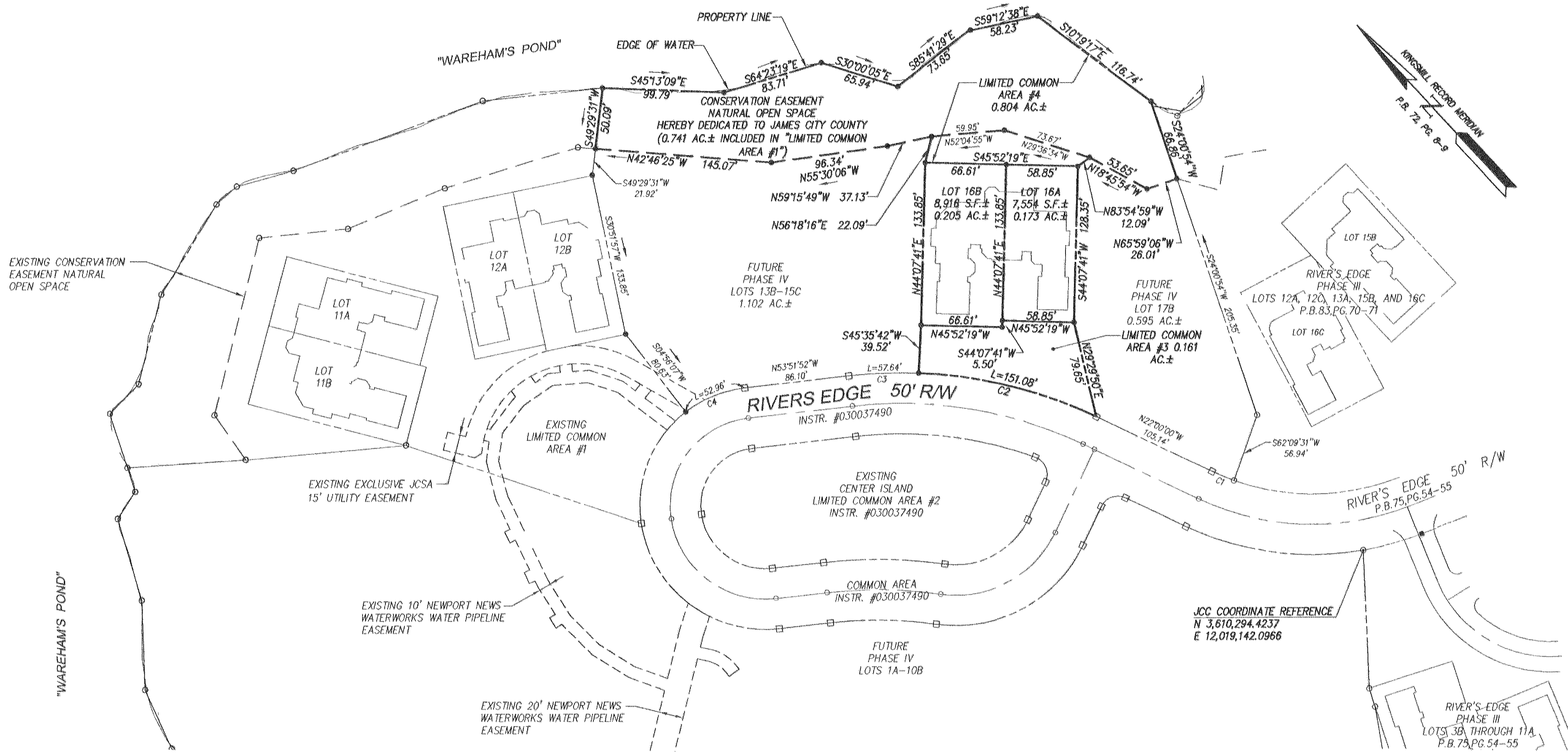
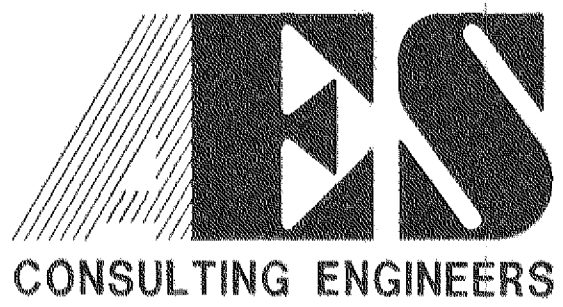
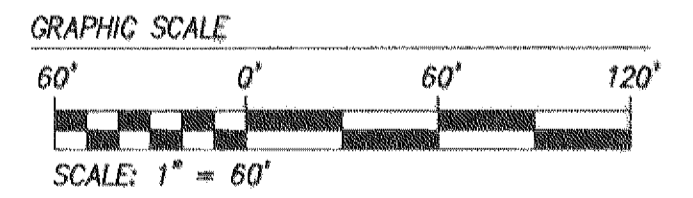


#040029232



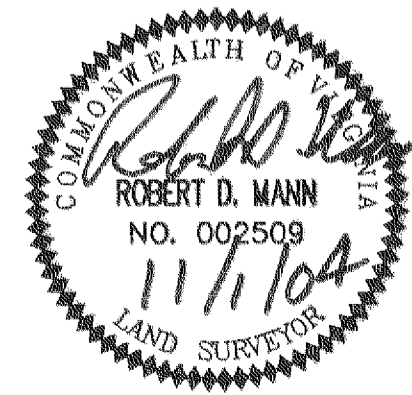
RIGHT-OF-WAY CURVE TABLE						
CURVE	DELTA	RADIUS	ARC	TANGENT	CHORD	CHORD BEARING
C1	05°50'29"	193.49'	19.73'	9.87'	19.72'	N24°55'15"W
C2	23°03'53"	375.30'	151.08'	76.58'	150.06'	N33°31'56"W
C3	08°48'00"	375.30'	57.64'	28.88'	57.59'	N49°27'52"W
C4	31°12'01"	97.26'	52.96'	27.15'	52.31'	N69°27'52"W

2 Large/Small Plate(s) Recorded herewith as # 040029232



5248 Olde Towne Road, Suite 1
Williamsburg, Virginia 23188
(757) 253-0040
Fax (757) 220-8994

PLAT OF SUBDIVISION
RIVER'S EDGE
PHASE IV
LOTS 16A AND 16B
OWNER/DEVELOPER: BUSCH PROPERTIES, INC.
ROBERTS DISTRICT JAMES CITY COUNTY VIRGINIA



No.	DATE	REVISION / COMMENT / NOTE	BY

City of Williamsburg & County of James City
Circuit Court: This PLAT was recorded on
17 November 2004
at 12:35 AM/PM PB. PG. 2
DOCUMENT # 040029232
BETSY B. WOOLRIDGE, CLERK
Betsy B. Woolridge Clerk

Designed	Drawn
AES	EAW
Scale	Date
1"=60'	11/1/04
Project No.	7753-5-4
Drawing No.	2 OF 2

05.11.03-10:44 7753-5-4-P04.dwg EAW