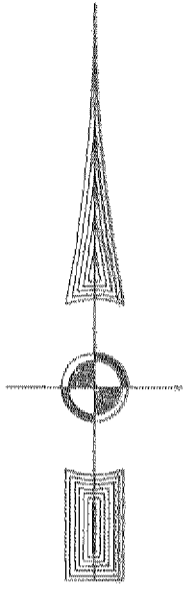


#04002916

EXIST. 20' JAMES CITY COUNTY SERVICE
AUTHORITY SAN. SEWER EASEMENT AS
SHOWN IN AS-BUILT LOCATION, D.B. 141 - PG. 388



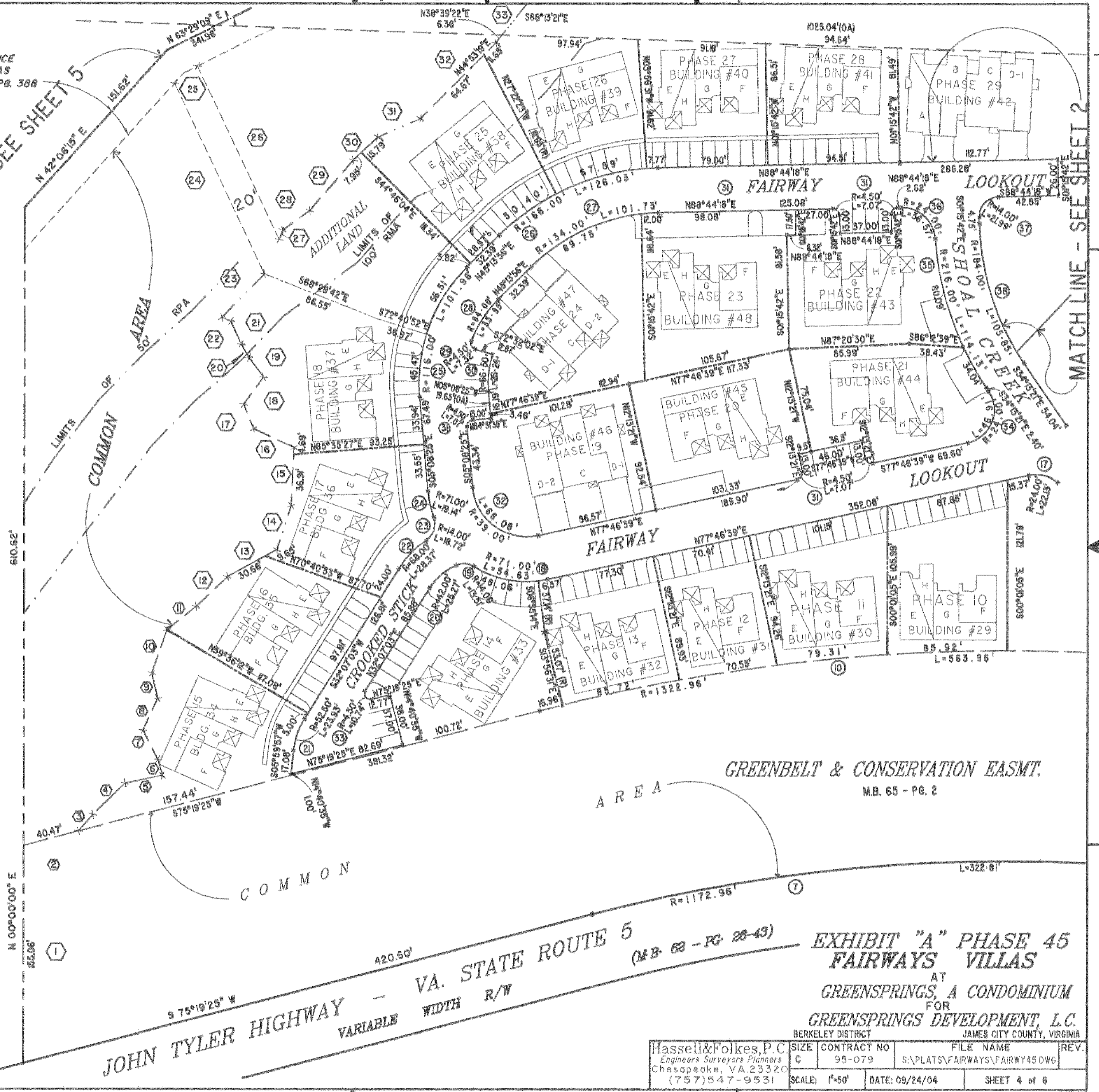
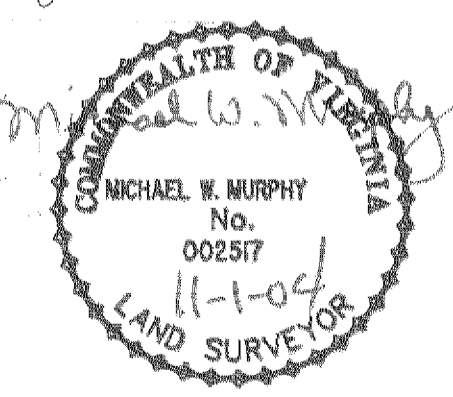
MATCH LINE - SEE SHEET 5

MATCH LINE - SEE SHEET 2

46-1-01-0-0001
"GREENSPRINGS PLANTATION"
(DB 322, PG 254)

6 Large/Small Plat(s) Recorded
herewith as # 040029161

City of Williamsburg & County of James City
Circuit Court: This PLAT was recorded on
16 November 2004
at 12:41 PM, PG. 2
DOCUMENT # 040029161
BETSY B. WOOLRIDGE, CLERK
Betsy B. Woolridge Clerk



GREENBELT & CONSERVATION EASMT.
M.B. 65 - PG. 2

VA. STATE ROUTE 5
JOHN TYLER HIGHWAY - VARIABLE WIDTH R/W

EXHIBIT "A" PHASE 45
FAIRWAYS VILLAS
AT
GREENSPRINGS, A CONDOMINIUM
FOR
GREENSPRINGS DEVELOPMENT, L.C.
BERKELEY DISTRICT JAMES CITY COUNTY, VIRGINIA

Hassell & Folkes, P.C. Engineers Surveyors Planners Chesapeake, VA 23320 (757)547-9531	SIZE C	CONTRACT NO 95-079	FILE NAME S:\PLATS\FAIRWAYS\FAIRWAY45.DWG	REV.
SCALE: 1"=50'	DATE: 09/24/04	SHEET 4 of 6		