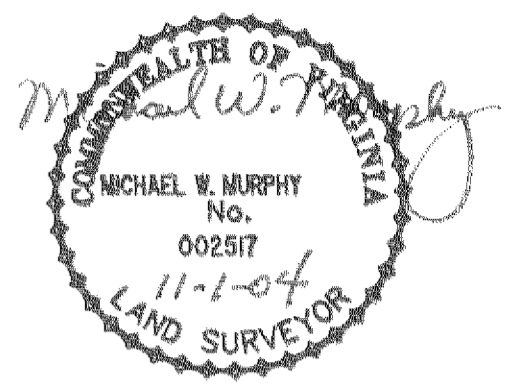


#040029161

46-1-01-0-0001
"GREENSPRINGS PLANTATION"
(DB 322, PG 254)



6 Large/Small Plat(s) Recorded
herewith as # 040029161

EXIST. 20' JAMES CITY COUNTY SERVICE
AUTHORITY SAN SEWER EASEMENT AS
SHOWN IN AS-BUILT LOCATION, D.B. 141 - PG. 388

City of Williamsburg & County of James City
Circuit Court: This PLAT was recorded on
16 November 2004
at 12:41 AM/PM, PG. 1
DOCUMENT # 040029161
BETSY B. WOOLRIDGE, CLERK
Betsy Woolridge

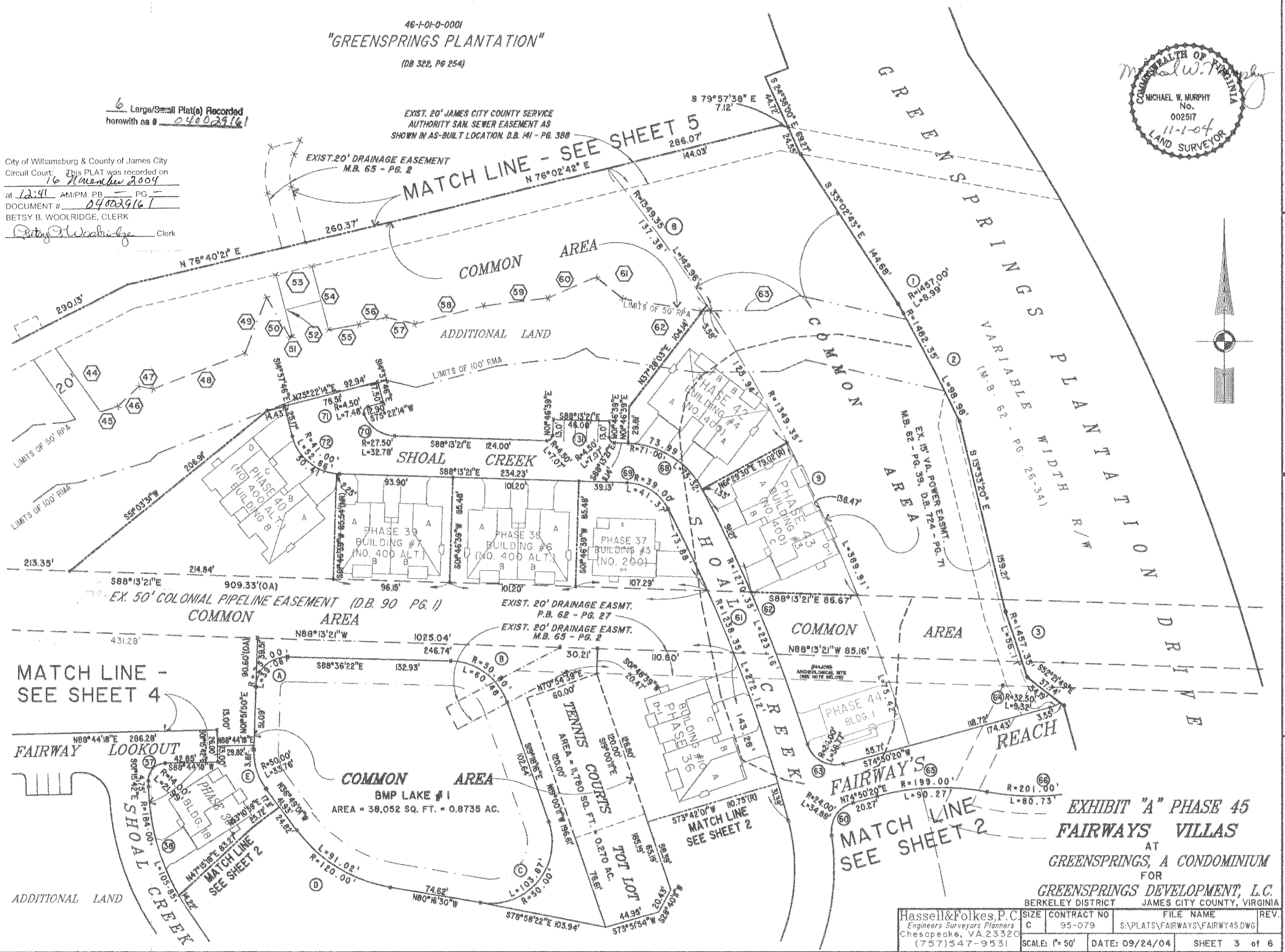


EXHIBIT "A" PHASE 45
FAIRWAYS VILLAS
AT
GREENSPRINGS, A CONDOMINIUM
FOR
GREENSPRINGS DEVELOPMENT, L.C.
BERKELEY DISTRICT JAMES CITY COUNTY, VIRGINIA

Hassell & Folkes, P.C. Engineers Surveyors Planners Chesapeake, VA 23320 (757) 547-9531	SIZE CONTRACT NO C 95-079	FILE NAME S:\PLATS\FAIRWAYS\FAIRWAY45.DWG	REV.
SCALE: 1" = 50'	DATE: 09/24/04	SHEET 3 of 6	