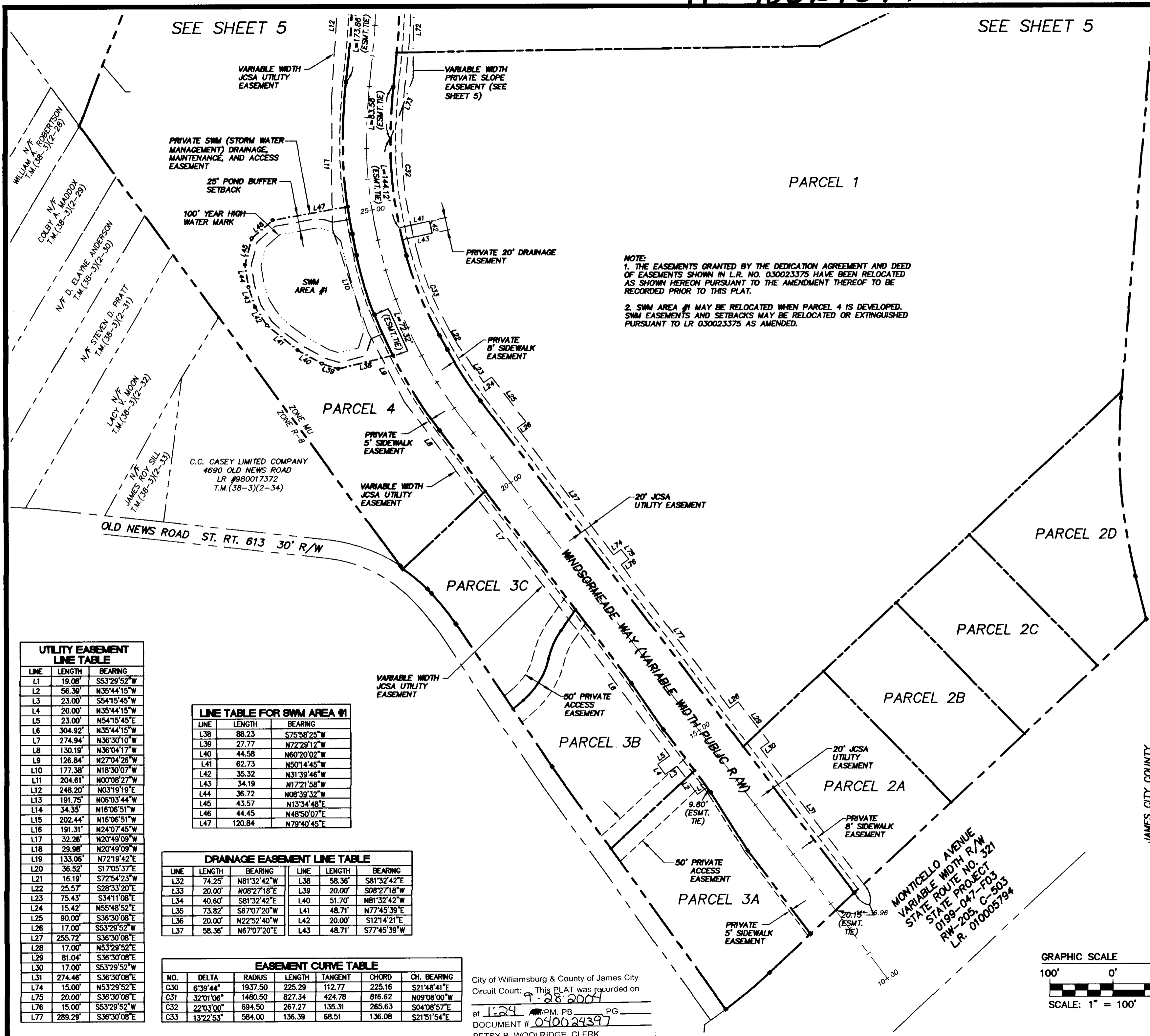


#040024397

SEE SHEET 5

SEE SHEET 5



NOTE:
 1. THE EASEMENTS GRANTED BY THE DEDICATION AGREEMENT AND DEED OF EASEMENTS SHOWN IN L.R. NO. 030023375 HAVE BEEN RELOCATED AS SHOWN HEREON PURSUANT TO THE AMENDMENT THEREOF TO BE RECORDED PRIOR TO THIS PLAT.
 2. SWM AREA #1 MAY BE RELOCATED WHEN PARCEL 4 IS DEVELOPED. SWM EASEMENTS AND SETBACKS MAY BE RELOCATED OR EXTINGUISHED PURSUANT TO LR 030023375 AS AMENDED.

ROUTE 199
 VARIABLE WIDTH R/W
 STATE PROJECT
 0199-047-F03
 RW-205, C-503
 L.R. 010005794

UTILITY EASEMENT LINE TABLE

LINE	LENGTH	BEARING
L1	19.08'	S53°29'52"W
L2	56.39'	N35°44'15"W
L3	23.00'	S54°15'45"W
L4	20.00'	N35°44'15"W
L5	23.00'	N54°15'45"E
L6	304.92'	N35°44'15"W
L7	274.94'	N36°30'10"W
L8	130.19'	N36°04'17"W
L9	126.84'	N27°04'26"W
L10	177.38'	N18°30'07"W
L11	204.61'	N00°08'27"W
L12	248.20'	N03°19'19"E
L13	191.75'	N06°03'44"W
L14	34.35'	N16°06'51"W
L15	202.44'	N16°06'51"W
L16	191.31'	N24°07'45"W
L17	32.26'	N20°49'09"W
L18	29.98'	N20°49'09"W
L19	133.06'	N72°19'42"E
L20	36.52'	S17°05'37"E
L21	16.19'	S72°54'23"W
L22	25.57'	S28°33'20"E
L23	75.43'	S34°11'08"E
L24	15.42'	N55°48'52"E
L25	90.00'	S36°30'08"E
L26	17.00'	S53°29'52"W
L27	255.72'	S36°30'08"E
L28	17.00'	N53°29'52"E
L29	81.04'	S36°30'08"E
L30	17.00'	S53°29'52"W
L31	274.46'	S36°30'08"E
L74	15.00'	N53°29'52"E
L75	20.00'	S36°30'08"E
L76	15.00'	S53°29'52"W
L77	289.29'	S36°30'08"E

LINE TABLE FOR SWM AREA #1

LINE	LENGTH	BEARING
L38	88.23	S75°58'25"W
L39	27.77	N72°28'12"W
L40	44.58	N60°20'02"W
L41	62.73	N50°14'45"W
L42	35.32	N31°39'46"W
L43	34.19	N17°21'58"W
L44	36.72	N08°39'32"W
L45	43.57	N13°34'48"E
L46	44.45	N48°50'07"E
L47	120.84	N79°40'45"E

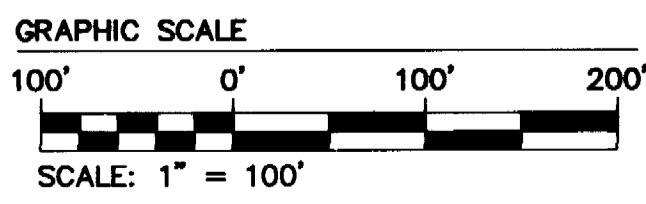
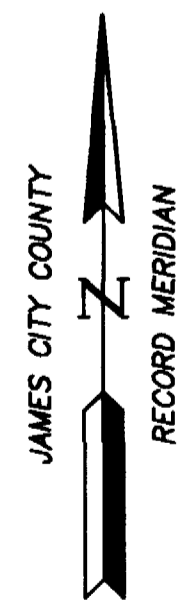
DRAINAGE EASEMENT LINE TABLE

LINE	LENGTH	BEARING	LINE	LENGTH	BEARING
L32	74.25'	N81°32'42"W	L38	58.36'	S81°32'42"E
L33	20.00'	N08°27'18"E	L39	20.00'	S08°27'18"W
L34	40.60'	S81°32'42"E	L40	51.70'	N81°32'42"W
L35	73.82'	S87°07'20"W	L41	48.71'	N77°45'39"E
L36	20.00'	N22°52'40"W	L42	20.00'	S121°4'21"E
L37	58.36'	N67°07'20"E	L43	48.71'	S77°45'39"W

EASEMENT CURVE TABLE

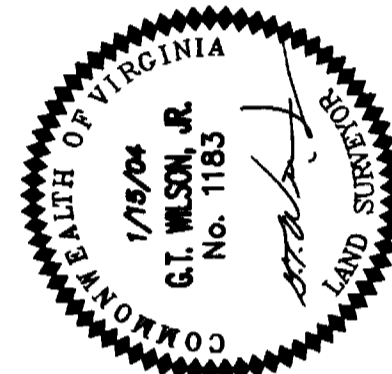
NO.	DELTA	RADIUS	LENGTH	TANGENT	CHORD	CH. BEARING
C30	6°39'44"	1937.50	225.29	112.77	225.16	S21°48'41"E
C31	32°01'06"	1480.50	827.34	424.78	816.62	N09°08'00"W
C32	22°03'00"	694.50	267.27	135.31	265.63	S04°08'57"E
C33	13°22'53"	584.00	136.39	68.51	136.08	S21°51'54"E

City of Williamsburg & County of James City
 Circuit Court: This PLAT was recorded on
 9-28-2004
 at 1:24 PM, PG
 DOCUMENT # 040024397
 BETSY B. WOOLRIDGE, CLERK
Betsy B. Woolridge Clerk



THIS SHEET ADDRESSES EASEMENTS ONLY

No.	DATE	REVISION / COMMENT / NOTE	BY
4	8/26/04	REVISED PER COUNTY COMMENTS	JFS
3	7/27/04	REVISED PER ATTORNEY COMMENTS	JFS
2	7/21/04	REVISED PER JCC COMMENTS	JFS
1	6/3/04	REVISED PER ATTORNEY COMMENTS	JFS



CONSULTING ENGINEERS
 5248 Old Towne Road, Suite 1
 Williamsburg, Virginia 23188
 (757) 253-0040
 Fax (757) 220-8994

PLAT OF SUBDIVISION
 AND LOT LINE EXTINGUISHMENT
 PARCELS 1 THROUGH 5
 BEING THE PROPERTY OF
 C.C. CASEY LIMITED COMPANY

DESIGNED: AES
 DRAWN: JFS
 SCALE: 1"=100'
 DATE: 1/15/04
 PROJECT NO.: 9069-02
 DRAWING NO.: 4 OF 5

JAMES CITY COUNTY VIRGINIA
 BERKELEY DISTRICT