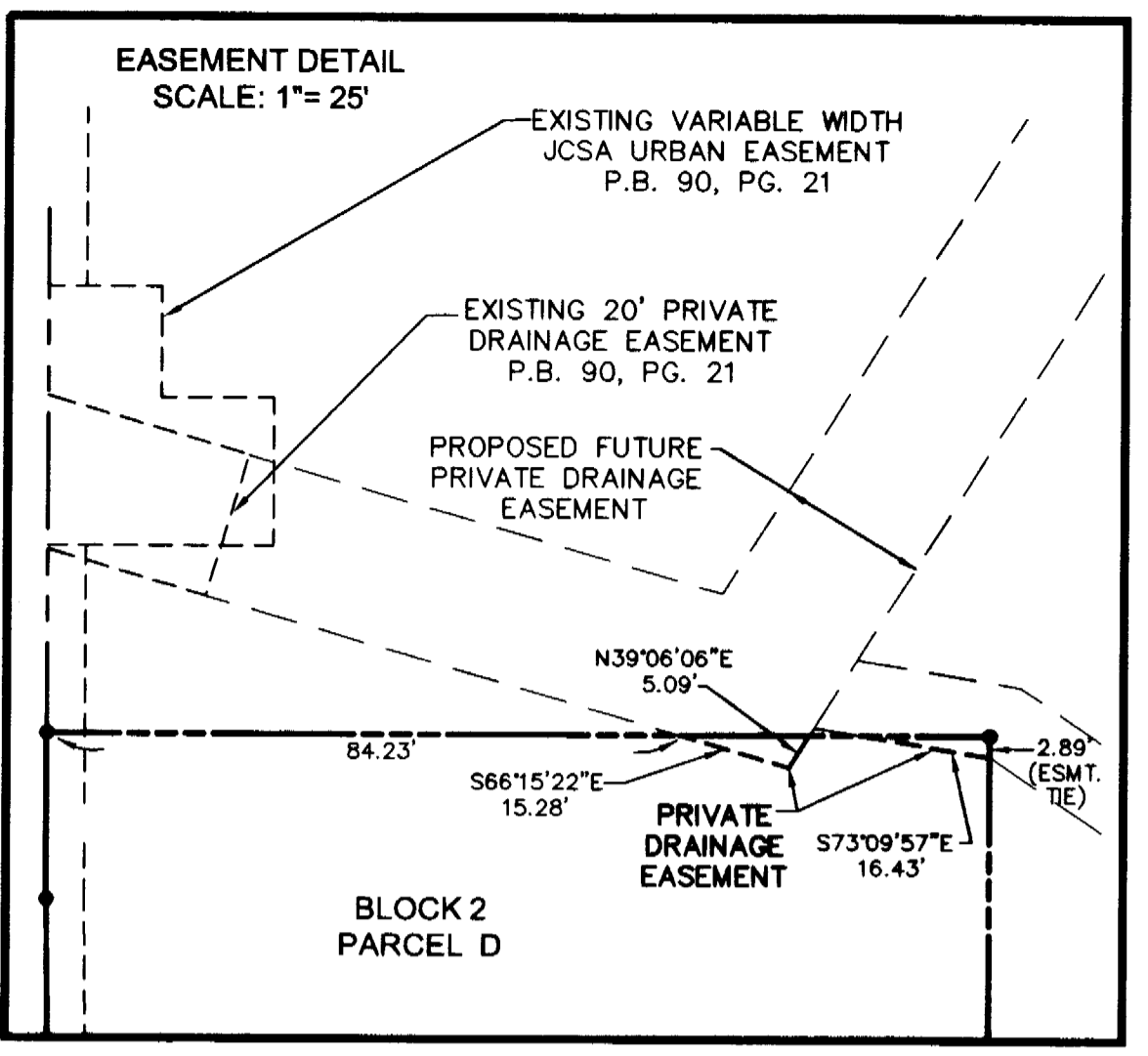
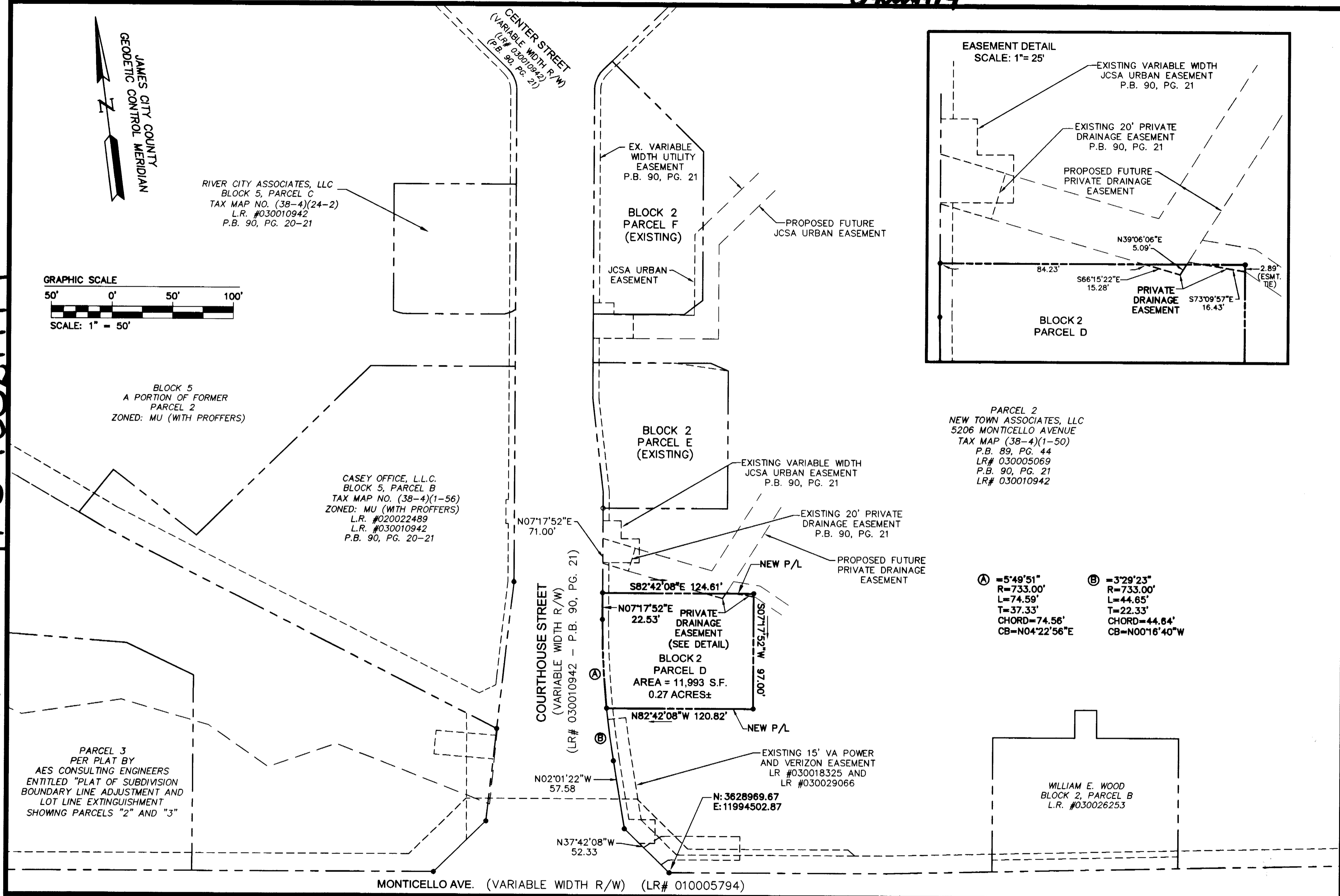
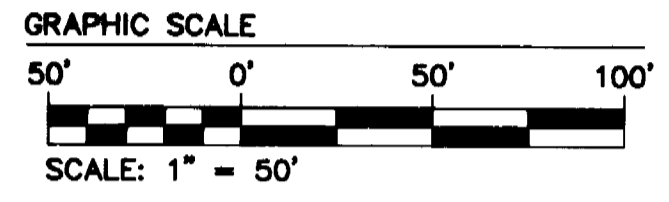
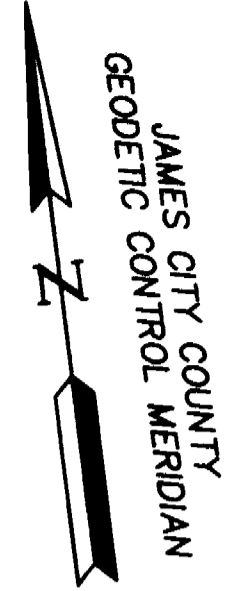


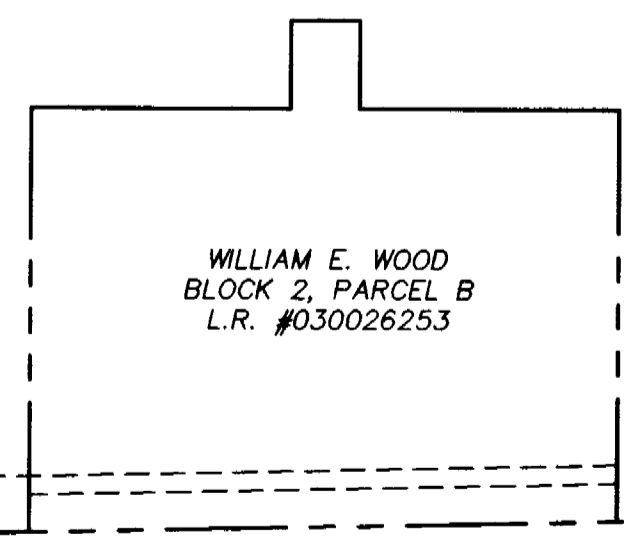
040021974

040021974

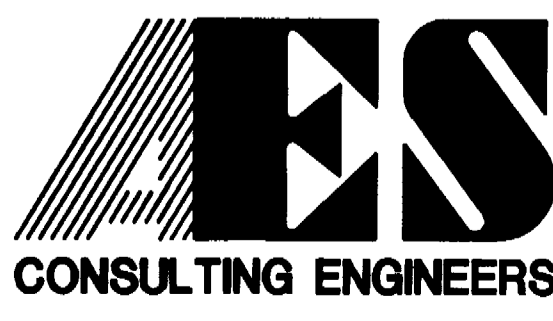


PARCEL 2
NEW TOWN ASSOCIATES, LLC
5206 MONTICELLO AVENUE
TAX MAP (38-4)(1-50)
P.B. 89, PG. 44
LR# 030005069
P.B. 90, PG. 21
LR# 030010942

Ⓐ = 5°49'51" R=733.00' L=74.59' T=37.33' CHORD=74.56' CB=N04°22'56"E
Ⓑ = 3°29'23" R=733.00' L=44.65' T=22.33' CHORD=44.64' CB=N00°16'40"W



S:\Jobs\6632-E-13-6 Credit Union.dwg Plots\6632E136Plot.dwg 7/22/2004 9:25:55 AM EST



5248 Olde Towne Road, Suite 1
Williamsburg, Virginia 23188
(757) 253-0040
Fax (757) 220-8994

PLAT OF SUBDIVISION
BLOCK 2, PARCEL D
NEW TOWN
BEING A PORTION OF THE PROPERTY OWNED BY
NEW TOWN ASSOCIATES, LLC
BERKELEY DISTRICT COUNTY OF JAMES CITY VIRGINIA



City of Williamsburg & County of James City Circuit Court		This PLAT was recorded on	
		30 August 2004	
at 10:58 AM/PM P.B. PG.			
DOCUMENT #		040021974	
BETSY B. WOOLRIDGE, CLERK			
		Clerk	
1	7/22/04	REVISED PER COUNTY COMMENTS	JFS
No.	DATE	REVISION / COMMENT / NOTE	BY

Designed	Drawn
GAM	JFS
Scale	Date
1"=50'	5/26/04
Project No.	
6632-E-13-6	
Drawing No.	
2 OF 2	