

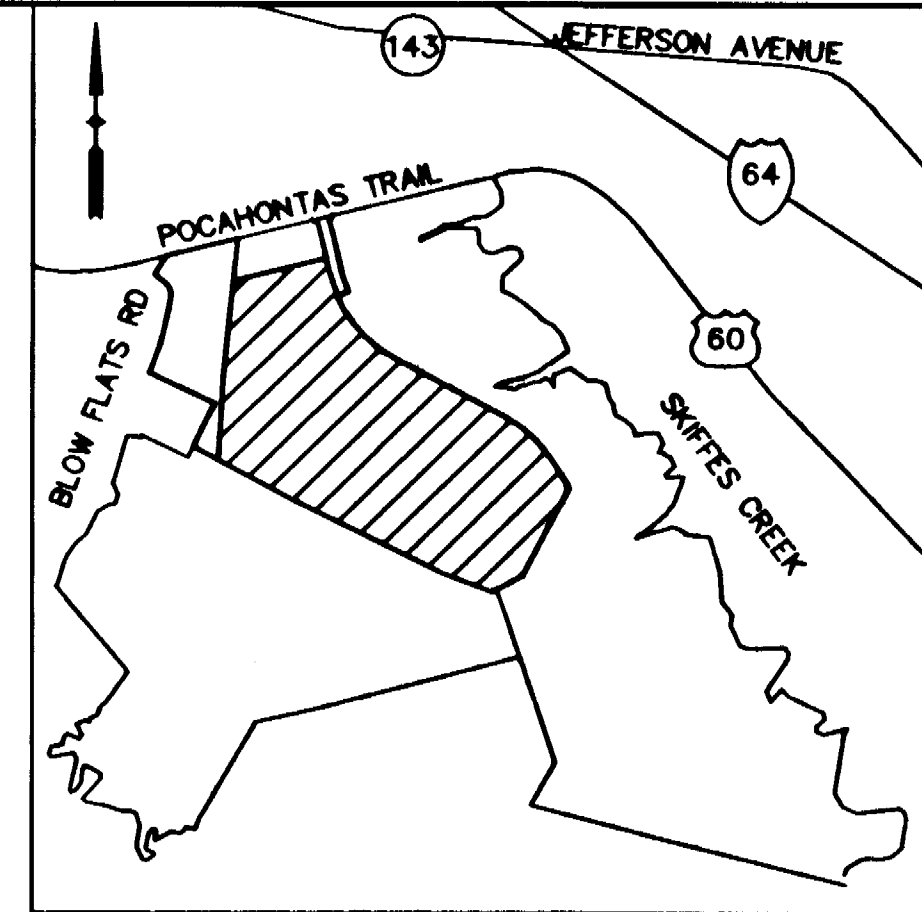
#040020635

N/F
GREEN MOUNT
ASSOCIATES, LLC
D.B. 467, P. 198

U.S. ROUTE 60 (50' R/W)

MERIDIAN SHOWN IS BASED ON VIRGINIA STATE PLANE
COORDINATES - SOUTH ZONE (NAD 83)(1986).

MERIDIAN M.B. 77, PG. 22 & 23



VICINITY MAP
1"=2000'

N/F
JAMES CITY CO.
(59-2)(1-26)

N/F
GREEN MOUNT
ASSOCIATES, LLC
D.B. 467, P. 198
LOT 1A
26.999 AC
P.B. 77, P. 22-23
TAX MAP
(60-1)(1-9)

LOT 2B
7.928 AC
M.B. 77, P. 22-23
TAX MAP
(60-1)(1-10A)

GREENMOUNT PARKWAY
(120' R/W)

LOT 3B
TAX MAP (60-1)(2-3B)

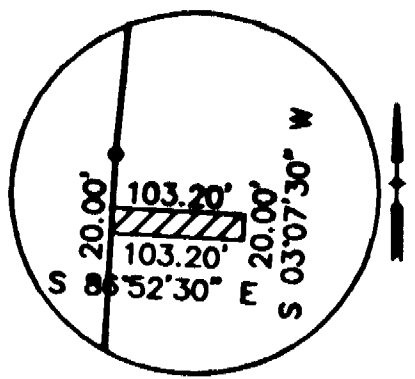
LOT 3C
TAX MAP (60-1)(2-3C)

LOT 3A
TAX MAP (60-1)(1-4)

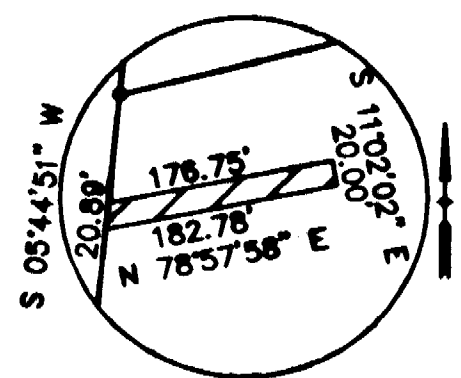
WAL-MART STORES EAST, INC.
EXISTING
LOT 2A
161.402 AC
P.B. 77, PP. 22-23
TAX MAP (60-1)(1-10)

N/F
COLONIAL
PIPELINE
COMPANY

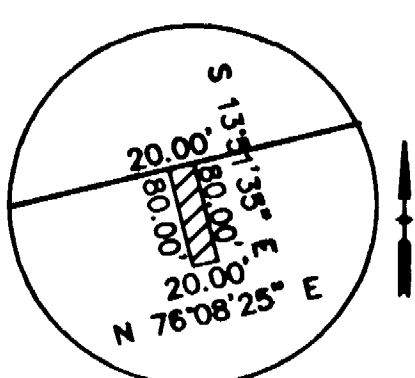
BLOW FLATS ROAD
(R/W VARIES)



DRAINAGE EASEMENT #1
AREA 2064 SF .05 AC



DRAINAGE EASEMENT #2
AREA 3595 SF .08 AC

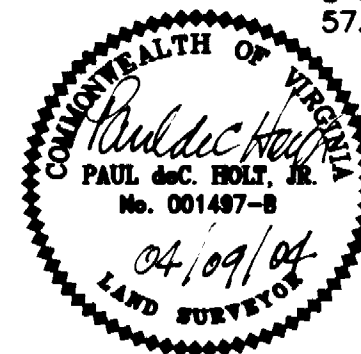
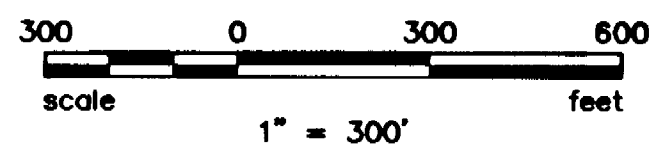


DRAINAGE EASEMENT #3
AREA 1600 SF .04 AC

LOT 4
242.9906 AC
SUBDIVISION OF PROPERTY
OF GREEN MOUNT ASSOCIATES
P.B. 57 PGS. 38 & 39
(59-2) (01-0-0047)

AREA TABLE

DRAINAGE EASEMENT NO. 1	2064	SF,	0.05	AC
DRAINAGE EASEMENT NO. 2	3595	SF,	0.08	AC
DRAINAGE EASEMENT NO. 3	1600	SF,	0.04	AC
TOTAL	7259	SF	0.17	AC



City of Williamsburg & County of James City
Circuit Court: This PLAT was recorded on
11 August 2004
at 9:27 AM/PM. PB. PG.
DOCUMENT # 040020635
BETSY B. WOOLRIDGE, CLERK
Betsy B. Woolridge Clerk

Patton Harris Rust & Associates, pc
Engineers. Surveyors. Planners. Landscape Architects.
PHRA 195 Rosemont Road, Suite 101
Virginia Beach, VA 23452
T 757.497.7472 F 757.497.0250

SURVEY	BC/DH	PLAT SHOWING PRIVATE DRAINAGE EASEMENTS ON LOT 2A (RESUBDIVISION OF PROPERTY OF GREEN MOUNT ASSOCIATES, PB 77 PGS. 22 & 23) ROBERTS DISTRICT, JAMES CITY COUNTY, VA.			
FILE NAME:	DRAIN ESMT PLAT.DWG				
CHECKED:	PDH				
DRAWN:	BJF				
DATE:	04/09/04				
PROJECT NO:	10590-1-2	SCALE	1" = 300'	SHEET	1 OF 1