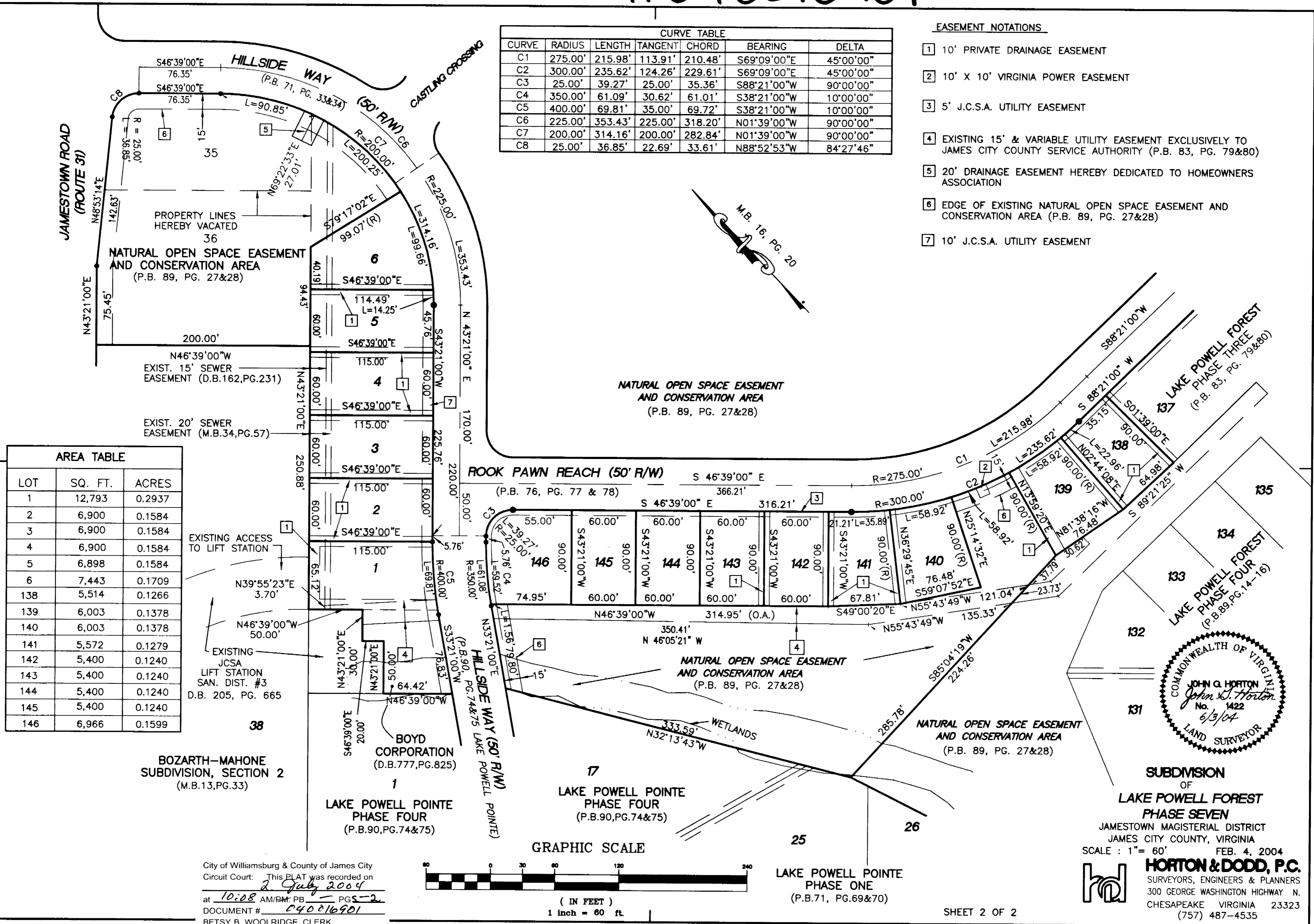


#040016901

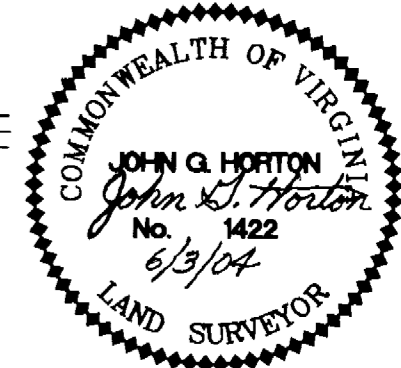
CURVE TABLE						
CURVE	RADIUS	LENGTH	TANGENT	CHORD	BEARING	DELTA
C1	275.00'	215.98'	113.91'	210.48'	S69°09'00"E	45°00'00"
C2	300.00'	235.62'	124.26'	229.61'	S69°09'00"E	45°00'00"
C3	25.00'	39.27'	25.00'	35.36'	S88°21'00"W	90°00'00"
C4	350.00'	61.09'	30.62'	61.01'	S38°21'00"W	10°00'00"
C5	400.00'	69.81'	35.00'	69.72'	S38°21'00"W	10°00'00"
C6	225.00'	353.43'	225.00'	318.20'	N01°39'00"W	90°00'00"
C7	200.00'	314.16'	200.00'	282.84'	N01°39'00"W	90°00'00"
C8	25.00'	36.85'	22.69'	33.61'	N88°52'53"W	84°27'46"

- EASEMENT NOTATIONS**
- 1 10' PRIVATE DRAINAGE EASEMENT
 - 2 10' X 10' VIRGINIA POWER EASEMENT
 - 3 5' J.C.S.A. UTILITY EASEMENT
 - 4 EXISTING 15' & VARIABLE UTILITY EASEMENT EXCLUSIVELY TO JAMES CITY COUNTY SERVICE AUTHORITY (P.B. 83, PG. 79&80)
 - 5 20' DRAINAGE EASEMENT HEREBY DEDICATED TO HOMEOWNERS ASSOCIATION
 - 6 EDGE OF EXISTING NATURAL OPEN SPACE EASEMENT AND CONSERVATION AREA (P.B. 89, PG. 27&28)
 - 7 10' J.C.S.A. UTILITY EASEMENT



AREA TABLE		
LOT	SQ. FT.	ACRES
1	12,793	0.2937
2	6,900	0.1584
3	6,900	0.1584
4	6,900	0.1584
5	6,898	0.1584
6	7,443	0.1709
138	5,514	0.1266
139	6,003	0.1378
140	6,003	0.1378
141	5,572	0.1279
142	5,400	0.1240
143	5,400	0.1240
144	5,400	0.1240
145	5,400	0.1240
146	6,966	0.1599

City of Williamsburg & County of James City
 Circuit Court: This PLAT was recorded on
 at 10:08 AM PM, PG. 2
 DOCUMENT # 040016901
 BETSY B. WOOLRIDGE, CLERK
Betsy B. Woolridge Clerk



SUBDIVISION OF LAKE POWELL FOREST PHASE SEVEN
 JAMESTOWN MAGISTERIAL DISTRICT
 JAMES CITY COUNTY, VIRGINIA
 SCALE: 1" = 60' FEB. 4, 2004
HORTON & DODD, P.C.
 SURVEYORS, ENGINEERS & PLANNERS
 300 GEORGE WASHINGTON HIGHWAY N.
 CHESAPEAKE VIRGINIA 23323
 (757) 487-4535